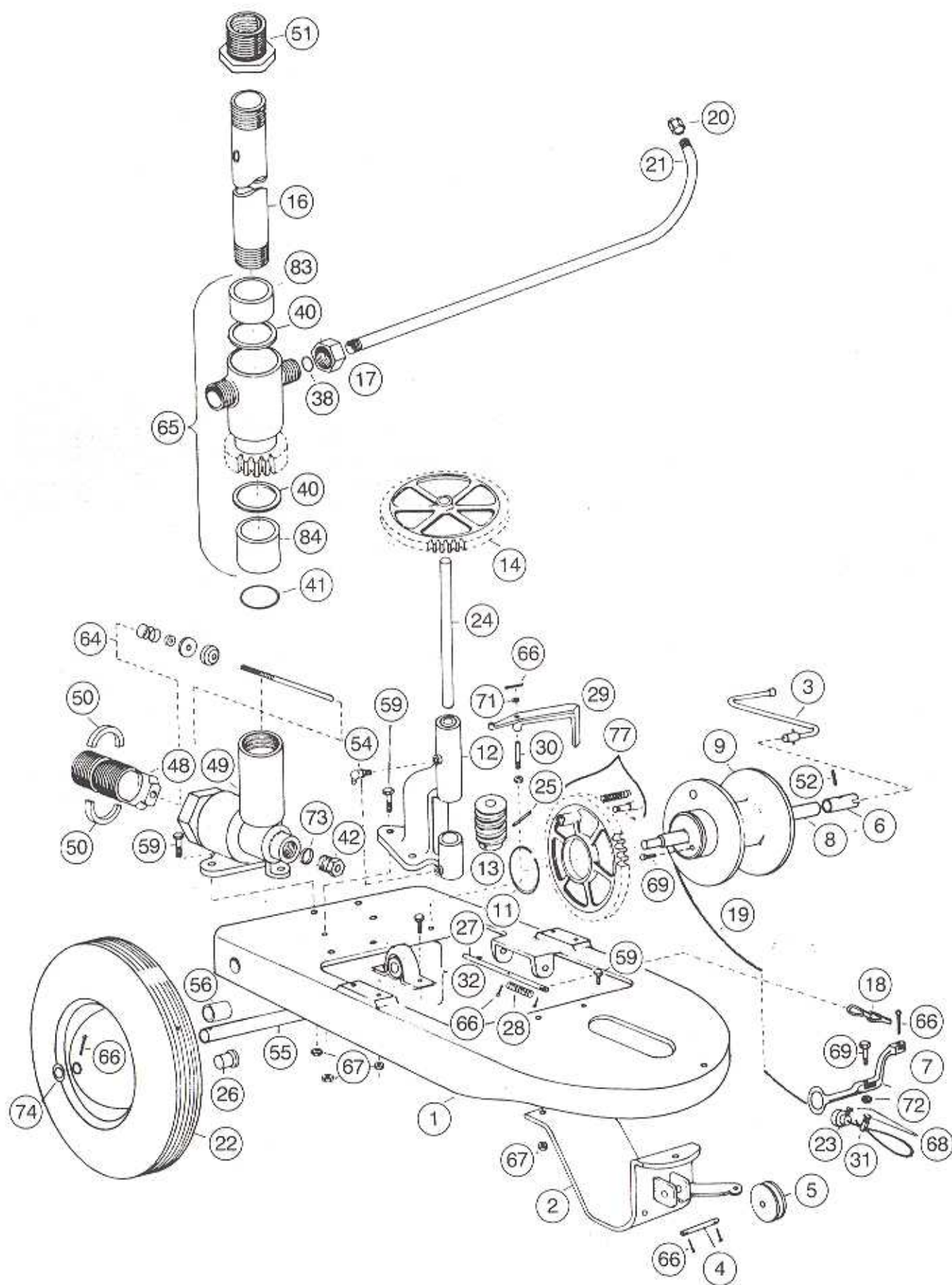


Model GW25 Travelling Sprinkler

Model 77 Travelling Sprinkler



Model GW25 Travelling Sprinkler

Model 77 Travelling Sprinkler

Product Code: Model GW25: 8000
Model 77: Non Current

A1A

No	Code	Description	Qty
1	=	Base	1
2	STP0532	Front Skid	1
3	STP0507	Winding Handle	1
4	STP0523	Shaft, Guide Wheel	1
5	STP0517	Wheel Guide	1
6	STP0516	Socket, Drive Cable Drum	1
7	STP0134	Lever, Shut-Off	1
8	STP0522	Shaft, Cable Drum	1
9	STP0706	Drum, Cable	1
11	STP0511	Circlip	1
12	STP0536	Mounting, Cross Shaft	1
13	STP0537	Worm	1
14	STP0150	Gear	1
16	STP0501	Spindle, Main	1
17	STP0153	Nut, Arm Gland	2
18	STP0170	Chain, Control	1
19	STP017190	Cable, 2.5 mm, 6/7 strand x 90 m	1
20	STP0174	Nozzle, driving	2
21	STP0175	Arm	2
22	STP0518	Wheel	2
23	STP0135	Button Stop	1
24	STP0147	Shaft, Cross	1
25	STP0538	Pin, Roll	1
26	STP0177	Bush, Flanged	1
27	STP0519	Pin Trip	1
28	STP0521	Spring	1
29	STP0528	Lever, Pin Trip	1
30	STP0129	Pin	1
31	STP01362	Clamp, Cable	1
32	STP0505	Bearing Assembly	1
38	ZDP1114	'O' Ring 0.612" x 0.103" BS114	1
40	STP0539	Seal 'V' Ring	2
41	ZDP1214	'O' Ring <i>FLAT WASHER - STP0197</i>	1
42	STP0504	Gland, Valve	1
48	STP0503	Adaptor, Hose	1
49	STP0514	Body Valve	1
50	STP0525	Collar Half	2
51	STP1018	Bush, 1" BSP	1
52	ZKK2011	Roll pin, 1/8" x 7/8" SS	1
54	STP0533	Grease Nipple	1
55	STP0524	Axle	1
56	STP0509	Bush, Wheel	1
59	ZKA7036	Bolt	3
64	STP0502	Valve, Shut-off Assembly	1
65	STP0609	Rotor and Bearing Assembly, complete	1
66	STP0140	Split Pin, 1/8" x 1" Brass	3
67	=	Split Pin, 5/16" Brass	2
68	=	Screw, hex 1/4" BSW x 5/8" — Refer Item 31	1
69	ZKE1016	Bolt, hex 1/4" BSW x 1-1/4", brass	2
71	=	Washer, 5/16" I.D., brass	1
72	ZKF2013	Nut, hex 1/4" W, brass	1
73	=	Packing Gland Oiled Asbestos String	1
74	ZKG2038	Washer, flat 1/2" steel	1
77	STP0614	Drive Wheel Cable Drum Assembly	1
78	STP0159	Valve Rod — Refer item 64	1
79	—	Seal Valve Rubber — Refer Item 64	1
80	—	Washer — Refer Item 64	1
81	—	Washer — Refer Item 64	1
82	—	Spring — Refer Item 64	1
83	STP0543	Bearing, Upper	1
84	STP0544	Bearing, Lower	1
85	STP0707	Pin Driving	1
86	STP0708	Pin Engagement	1