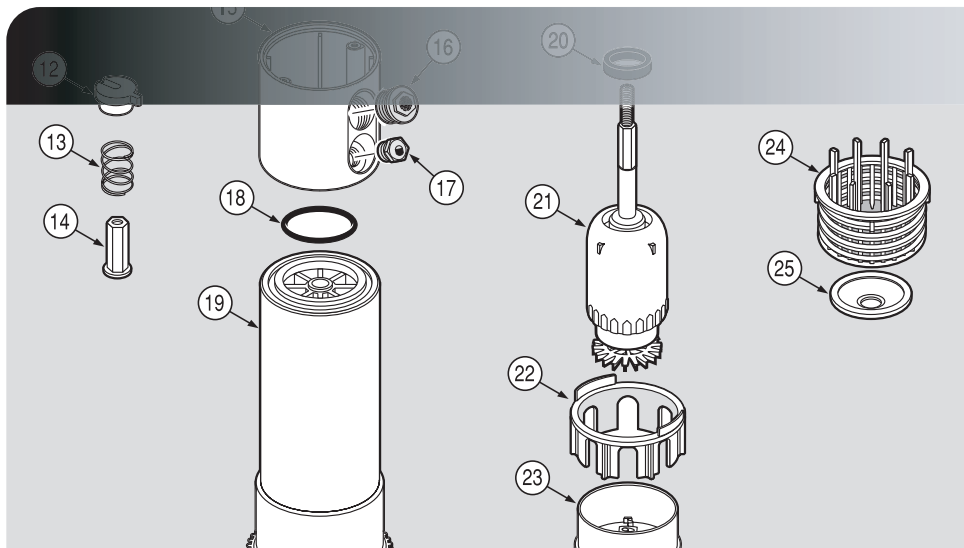
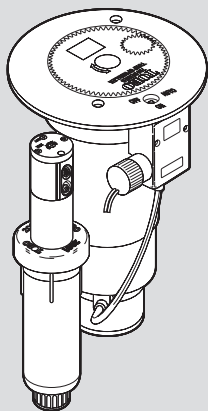


TORO

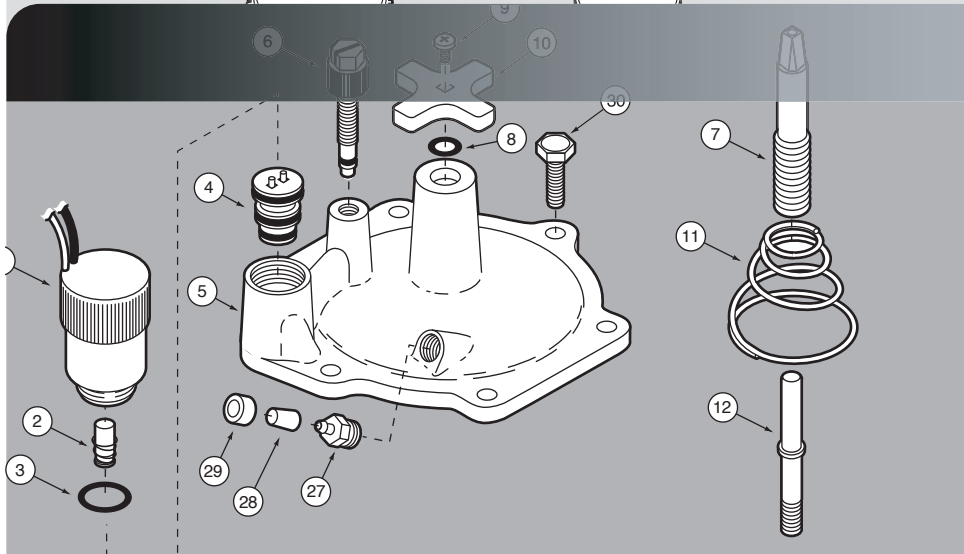
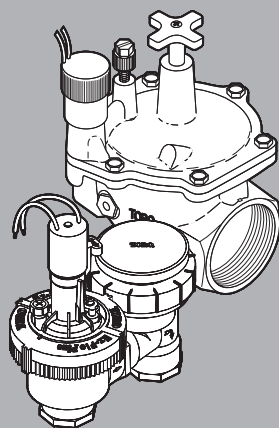
Count on it.

2005 Irrigation Products Illustrated Parts Breakouts

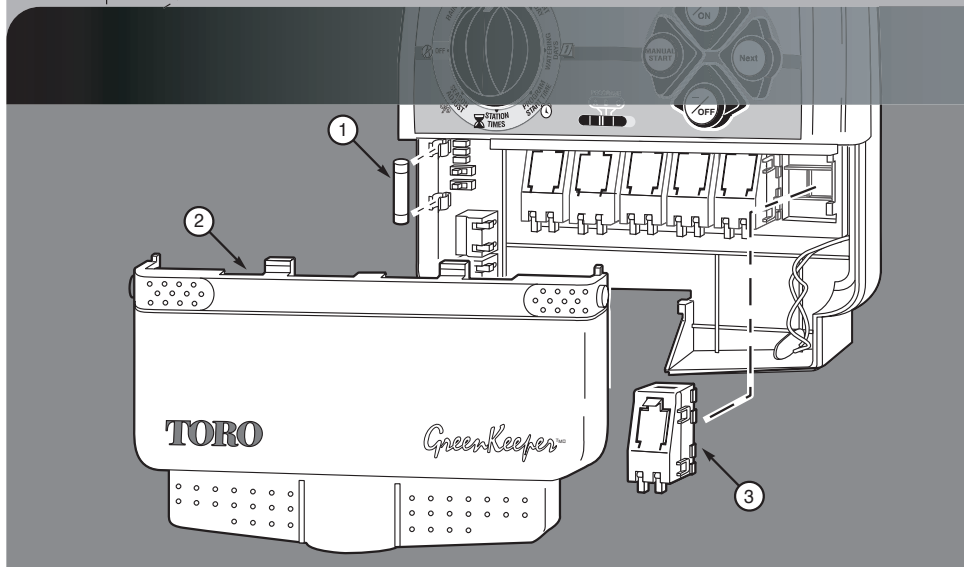
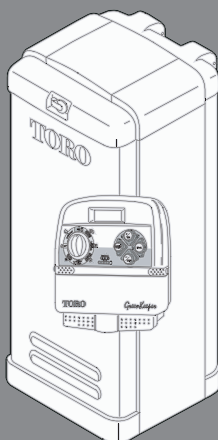
Sprinklers



Valves



Controllers



GENERAL INFORMATION

Please note the following usage guidelines:

- When dashes (- - - -) are shown in place of a part number, the part is either not available for sale or not sold separately. Refer to the accompanying Service Items listing for availability.
- An asterisk (*) preceding a part number indicates the item is only available through the Toro Finished Goods Distribution System and must be ordered accordingly.
- This book is updated annually. The published part numbers and descriptions are subject to change. If changes and/or corrections are required, the updated information will be made available through the Toro Distributor Operations Bulletin and/or Tech Tip communications.
- Common abbreviations used within this publication:

A	= Ampere	NO	= Normally Open (Micro Switch)
Amp	= Ampere	NPT	= National Pipe Thread
Assy.	= Assembly	PC	= Part Circle
ADJ	= Adjustable	Pot.	= Potentiometer
B	= Barbed	PV	= Pilot Valve
BSP	= British Standard Pipe	PHPH	= Pan Head Phillips Head
COM	= Check-O-Matic	PHFH	= Pan Head Fillister Head
CR	= Contamination Resistant	PT	= Pin Type (Hydraulic)
CSA	= Canadian Standards Association	PR	= Pressure Regulated
EL	= Electric	Prog.	= Program
Elec	= Electric	RC	= Rubber Cover
Exp	= Export	RPD	= Revolutions Per Day
F	= Female	RPM	= Revolutions Per Minute
FC	= Full Circle (Sprinkler)	S	= Slip
FC	= Flow Control (Valve)	SST	= Stainless Steel
GPM	= Gallons Per Minute	SI	= Side Inlet
Hyd.	= Hydraulic	Svc	= Service
Hz	= Hertz	TM	= Timing Mechanism
in.	= Inch	V	= Volts
Int.	= Internal	V a.c.	= Volts Alternating Current
Int. T	= Internal Tooth	V d.c.	= Volts Direct Current
L/	= Less	VA	= Volt Amps
lbs.	= Pounds	VIH	= Valve In Head
M	= Male	w/	= with
M/F	= Male/Female	w/o	= without
N/I	= Not Indicated	"	= Inches
NC	= Normally Closed (Hydraulic)	'	= Feet
NC	= Normally Closed (Micro Switch)		
NO	= Normally Open (Hydraulic)		

Valves

EZ-Flo™ Plus Series Valves

1 Inch Male	80
1 Inch Female.....	81
1 Inch Angle.....	82
3/4 Inch and 1 Inch AVB.....	83

264 Series Plastic Valves

3/4 Inch	84
1 Inch	85

254 Series Plastic Valves, 1 Inch

86

250 Series Plastic Valves, 1 Inch

87

260 Series Plastic Valves, 1 Inch

88

252 Series Plastic Valves

1 Inch	89
1.5 Inch	90–91
2 Inch	92–93

P-220 Series Plastic Valves

1 Inch	94
1.5 Inch	95
2 Inch	96
3 Inch	97

220 Series Brass Valves

1 Inch	98–99
1.25 Inch & 1.5 Inch	100–101
2 Inch	102–103
2.5 Inch & 3 Inch	104

Flo-Pro® Series Valves

3/4 & 1 Inch AVB	105
1 Inch Female	106
1 Inch Male	107
1 Inch Angle	108
1 Inch Globe	109

216 Series Brass Valves

1 Inch	110–111
1.25 Inch & 1.5 Inch	112–113
2 Inch	114–115
2.5 Inch & 3 Inch	116–117

Pressure Regulator

118

2-way Pilot Valve, 284-60-00

119

Manual Actuator, 286-61-01

120

3-way Actuator

286-66-01	121
286-68-00	122

Electric-Hydraulic Converter

123

Pressure Vacuum Breaker

3/4 Inch 80-0550 and 1 Inch 80-0560	124–125
---	---------

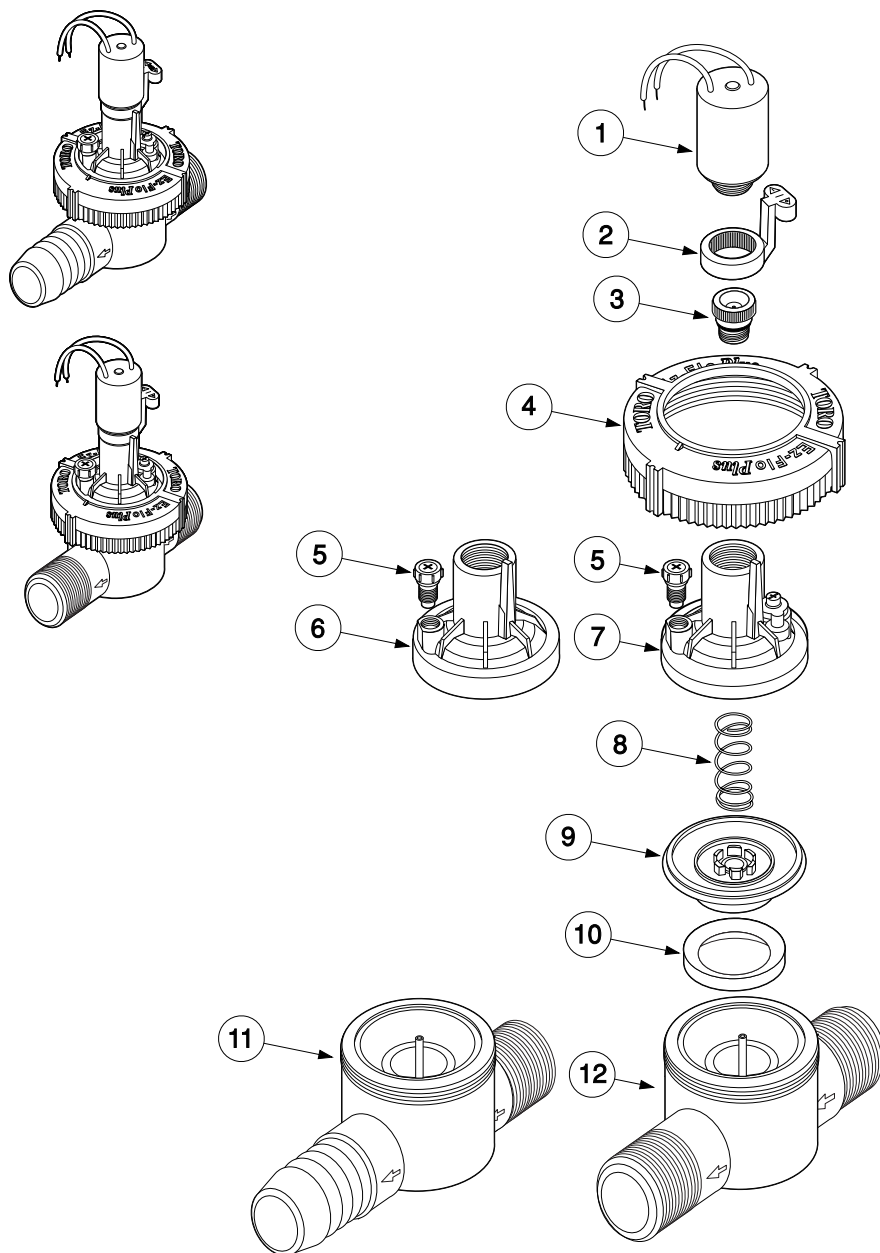
Flow Gauge

126

VALVES

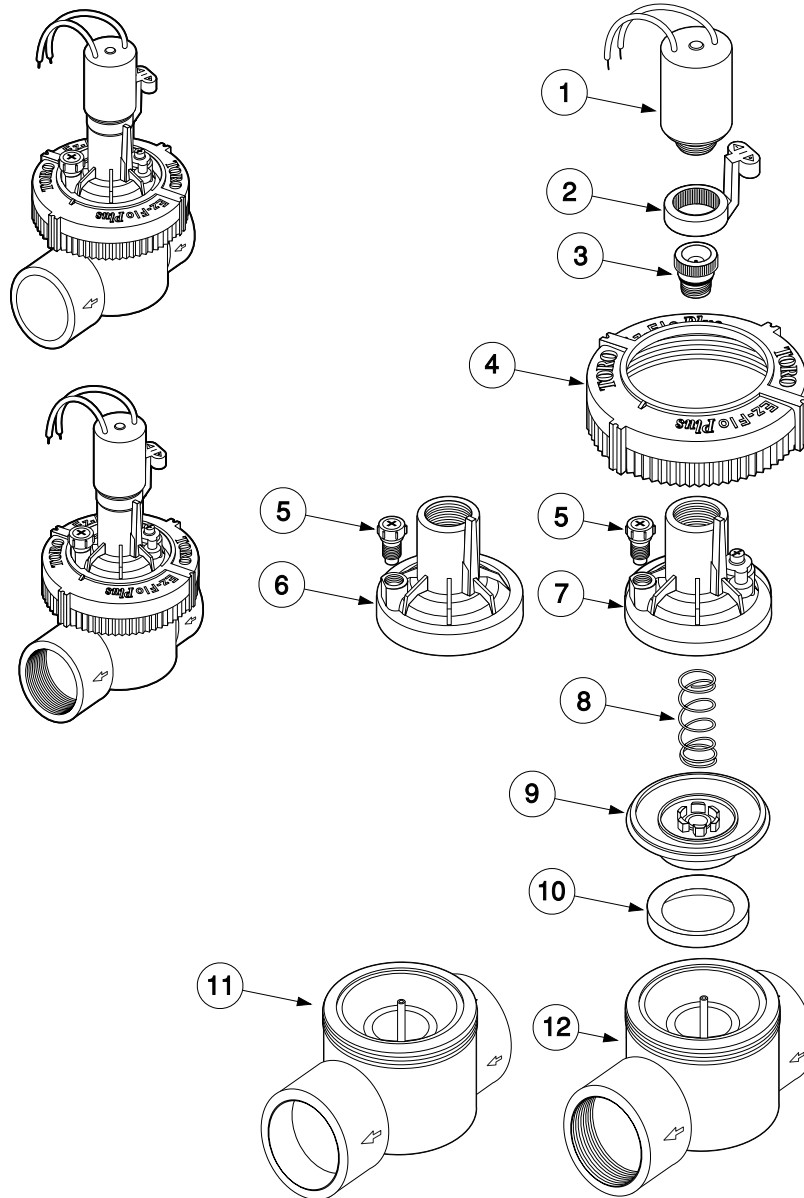
VALVES

EZ-Flo Plus Series, 1 Inch Male



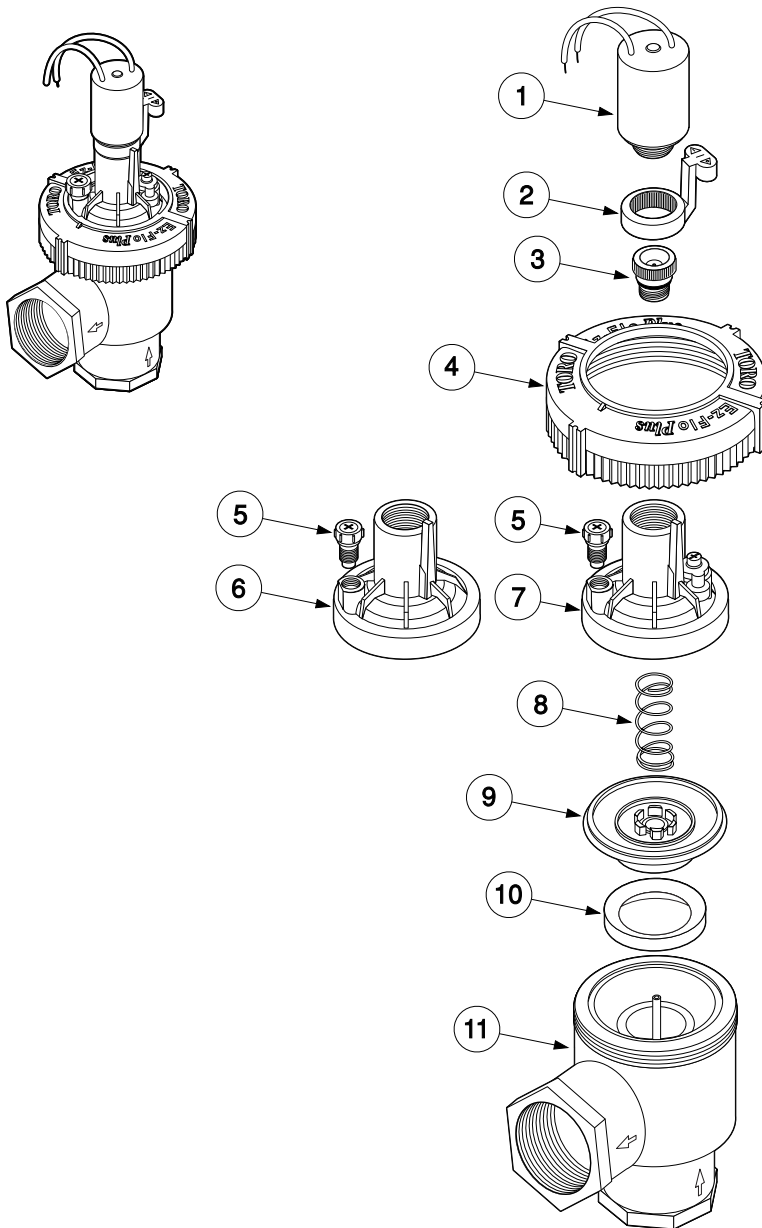
Item No.	Part No.	Description	Quantity Per Assy.
1	102-0842	Solenoid Assy., 24 V a.c., 60 Hz	1
2	1081501	Handle, Bleed Plug	1
3	933801	Bleed Plug Assy.	1
4	102-1717	Cover Nut	1
5	1081401	External Bleed Screw	1
6	512203	Cover Assy. (w/o Flow Control)	1
7	1115004	Cover Assy. (Flow Control Models)	1
8	204A-37	Spring	1
9	138802	Diaphragm Assy.	1
10	1116602	Divider	1
11	-----	Body Assy., 1", M x B, NPT	1
12	-----	Body Assy., 1", M x M, NPT	1

EZ-Flo Plus Series, 1 Inch Female



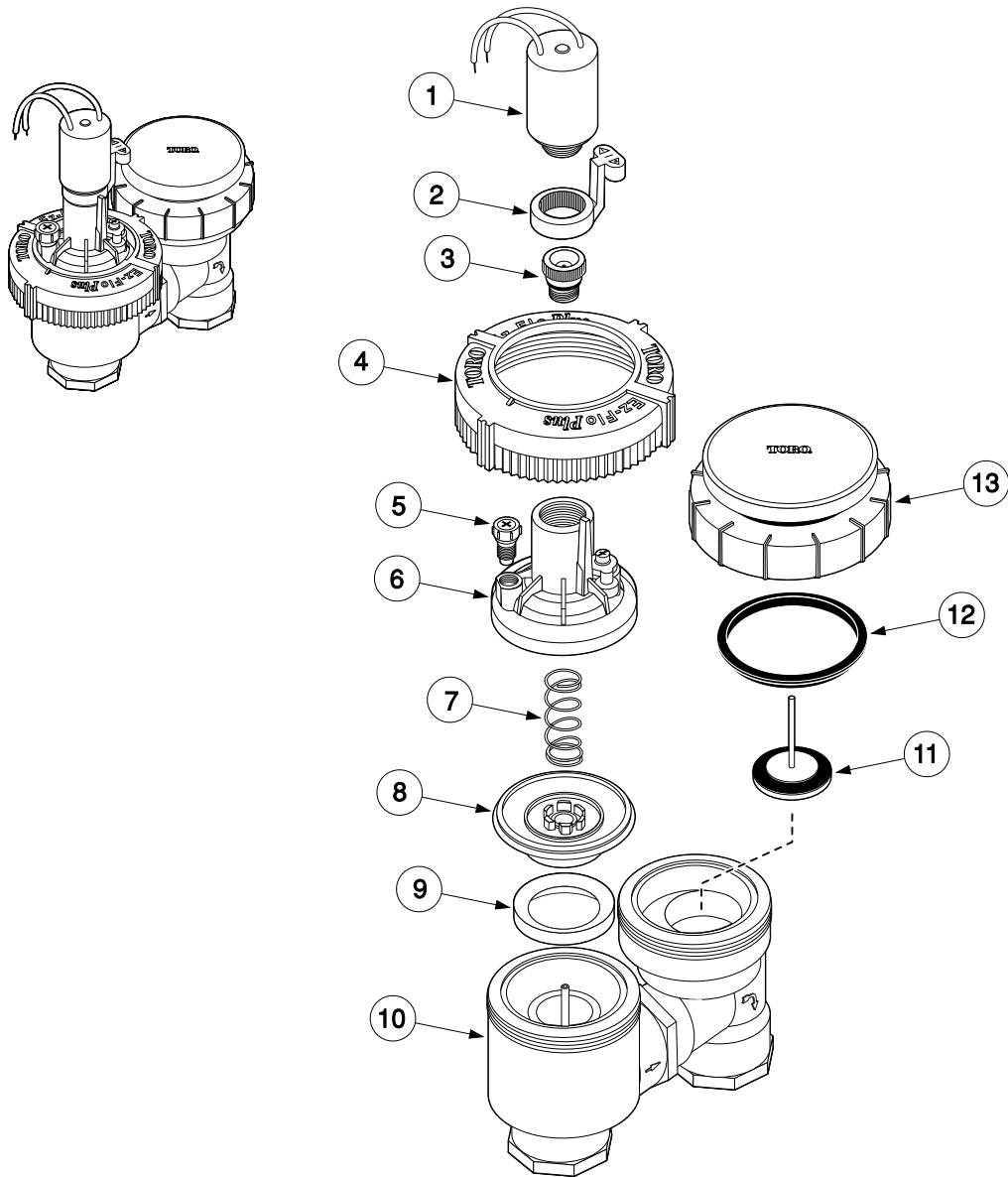
Item No.	Part No.	Description	Quantity Per Assy.
1	102-0842	Solenoid Assy., 24 V a.c., 60 Hz	1
2	1081501	Handle, Bleed Plug	1
3	933801	Bleed Plug Assy.	1
4	102-1717	Cover Nut	1
5	1081401	External Bleed Screw	1
6	512203	Cover Assy. (w/o Flow Control)	1
7	1115004	Cover Assy. (Flow Control Models)	1
8	204A-37	Spring	1
9	138802	Diaphragm Assy.	1
10	1116602	Divider	1
11	-----	Body Assy., 1", F x F, Slip	1
12	-----	Body Assy., 1", F x F, NPT	1

EZ-Flo Plus Series, 1 Inch Angle



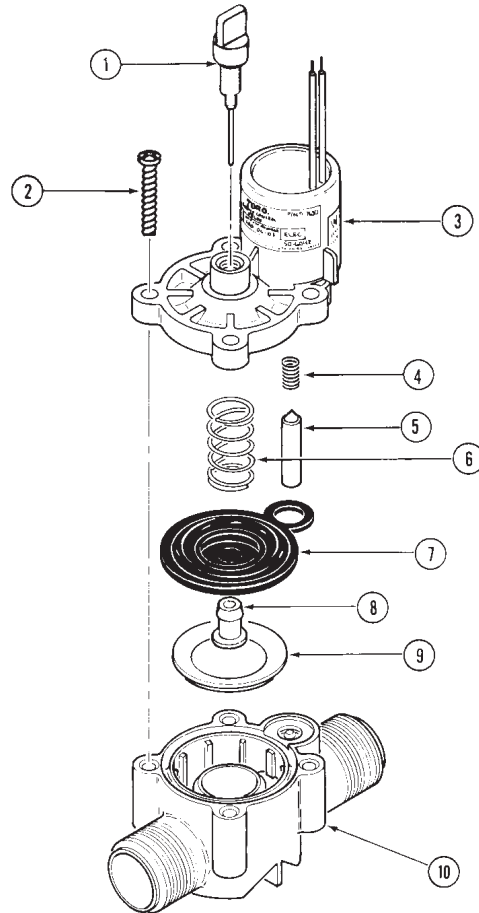
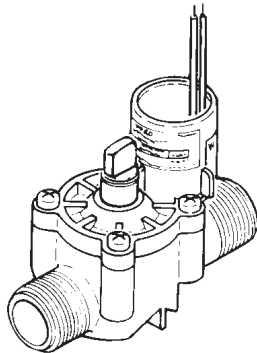
Item No.	Part No.	Description	Quantity Per Assy.
1	102-0842	Solenoid Assy., 24 V a.c., 60 Hz	1
2	1081501	Handle, Bleed Plug	1
3	933801	Bleed Plug Assy.	1
4	102-1717	Cover Nut	1
5	1081401	External Bleed Screw	1
6	512203	Cover Assy. (w/o Flow Control)	1
7	1115004	Cover Assy. (Flow Control Models)	1
8	204A-37	Spring	1
9	138802	Diaphragm Assy.	1
10	1116602	Divider	1
11	-----	Body Assy., 1", F x F, NPT	1

EZ-Flo Plus AVB Series, 3/4 Inch and 1 Inch



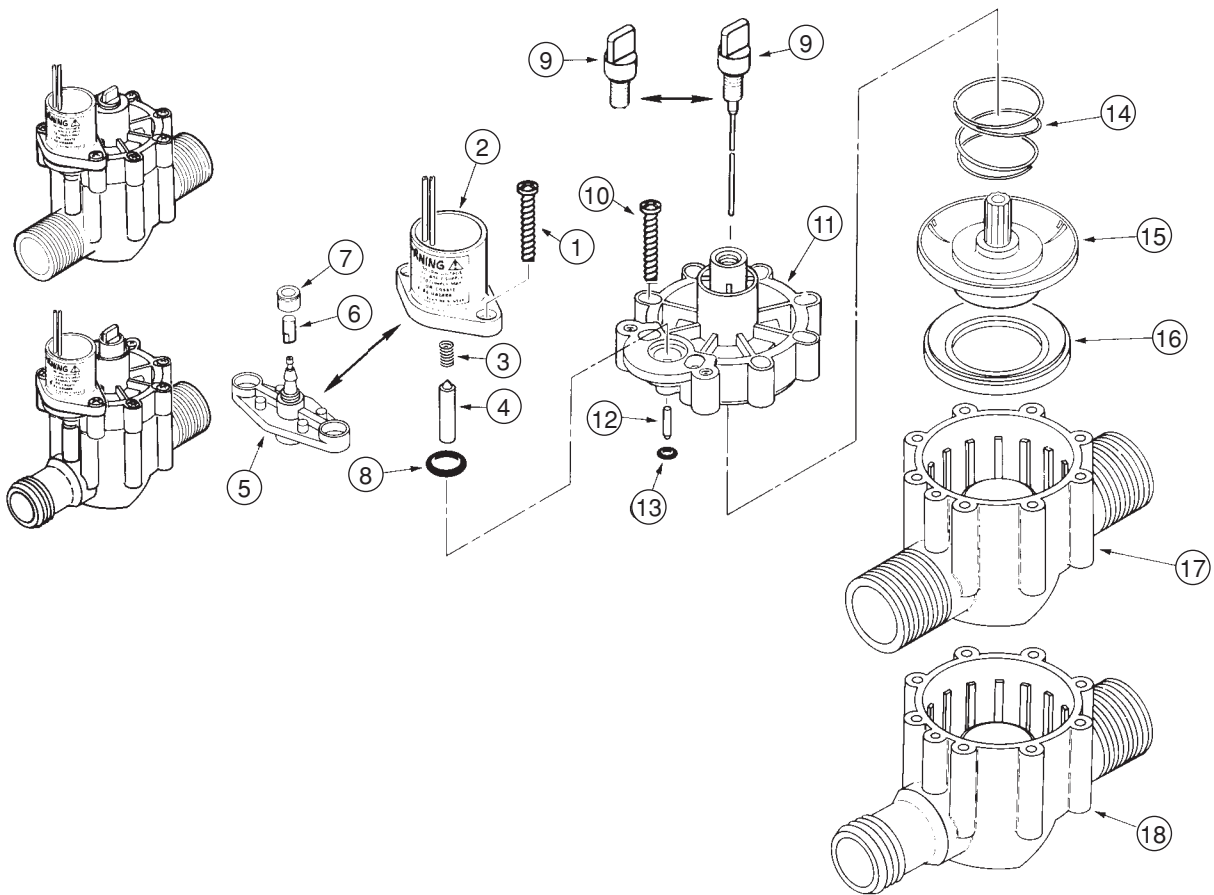
Item No.	Part No.	Description	Quantity Per Assy.
1	102-0842	Solenoid Assy., 24 V a.c., 60 Hz	1
2	1081501	Handle, Bleed Plug	1
3	933801	Bleed Plug Assy.	1
4	102-1717	Cover Nut	1
5	1081401	External Bleed Screw	1
6	1115004	Cover Assy.	1
7	204A-37	Spring	1
8	138802	Diaphragm Assy.	1
9	1116602	Divider	1
10	-----	Body Assy, 3/4", NPT	1
10	-----	Body Assy, 1", NPT	1
11	1088001	Stem Assy., 3/4"	1
11	1018601	Stem Assy., 1"	1
12	595901	Seal, Anti-Siphon Cover, 3/4"	1
12	655401	Seal, Anti-Siphon Cover, 1"	1
13	217107-H	Shield/Cover Assy., 3/4"	1
13	519111	Shield/Cover Assy., 1"	1

264 Series, 3/4 Inch



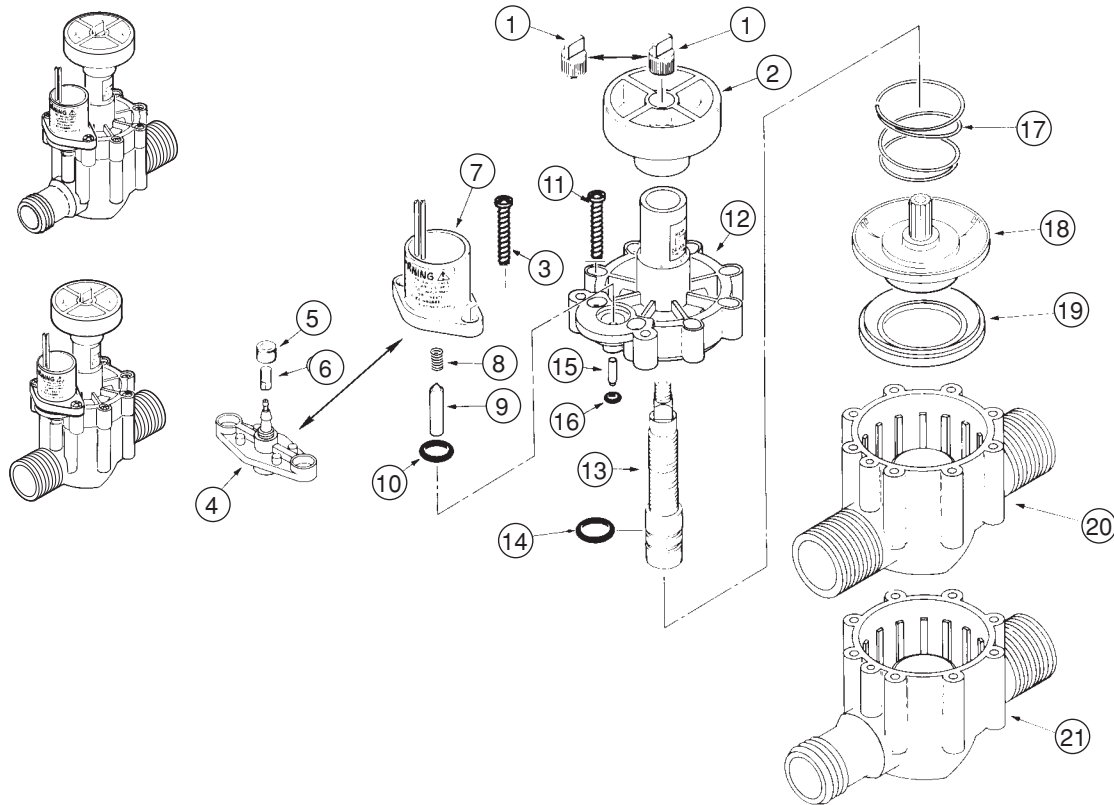
Item No.	Part No.	Description	Quantity Per Assy.
1	35-4889	Bleed Screw Assy. with Pin	1
2	363-1493	Screw, #10 x 1"	4
3	9-7413	Cap Assy.	1
4	9-6148	Spring, Plunger, Solenoid	1
5	9-6527	Plunger Assy.	1
6	9-7619	Spring, Diaphragm	1
7	35-8941	Diaphragm Assy. (Includes Item 8)	1
8	-----	Plug, Metering, Diaphragm	1
9	9-7835	Support, Diaphragm	1
10	9-7992	Body, Valve	1

264 Series, 1 Inch



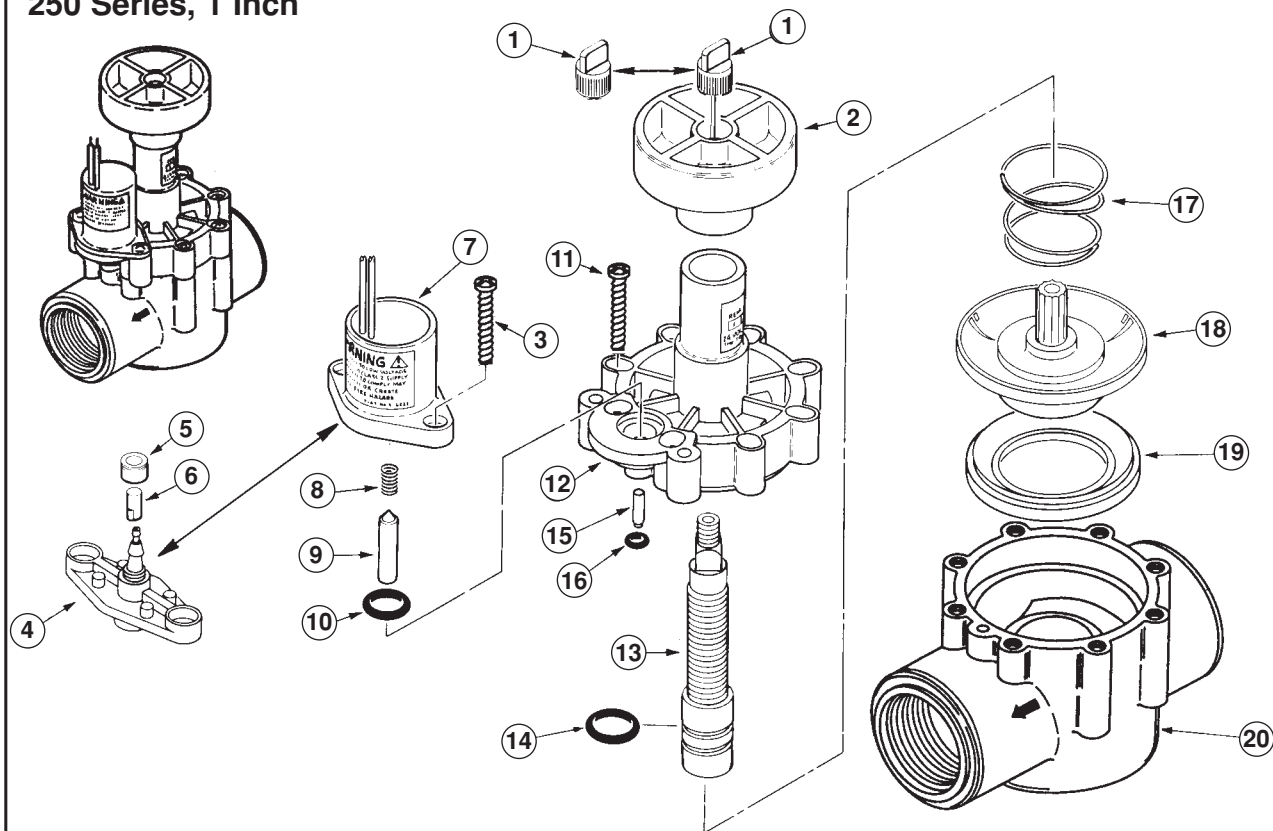
Item No.	Part No.	Description	Quantity Per Assy.
1	363-1493	Screw, #10 x 1"	2
2	-----	Solenoid Assy., EL (See Service Item 89-0878)	1
3	9-6148	Spring, Plunger, Solenoid, EL	1
4	9-6527	Plunger Assy., EL	1
5	35-3776	Adapter Assy., NO	1
6	89-8157	Cap, 1/4", Poly, NO	1
7	*900-40	Retainer, Tube, NO	1
8	2-9652	O-Ring, 7/16" x 5/8", NO	1
9	35-2673	Bleed Screw, NO	1
9	35-2941	Bleed Screw Assy., EL, Fast-closing	1
10	363-4007	Screw, #10 x 1.25"	8
11	9-8313	Cap Assy., EL	1
11	9-7291	Cap Assy., NO	1
12	3-2016	Shaft, Idler, Lower, NO	1
13	1-2035	O-Ring, 0.070" x 0.114" x 0.254"	1
14	9-7110	Spring, Diaphragm	1
15	35-2824	Diaphragm Assy., 1", EL	1
15	35-2943	Diaphragm Assy., 1", NO Hyd	1
17	9-8311	Body, M x M, 1", NPT	1
18	35-1772	Body, M x B, 1", NPT	1
		SERVICE ITEMS	
	89-0878	Solenoid & Plunger Assy., EL (Includes Items 2-4)	
	35-9354	Bleed Screw Assy., EL, Slow-closing	
		* Order Through Finished Goods Distribution System—Minneapolis	

254 Series, 1 Inch



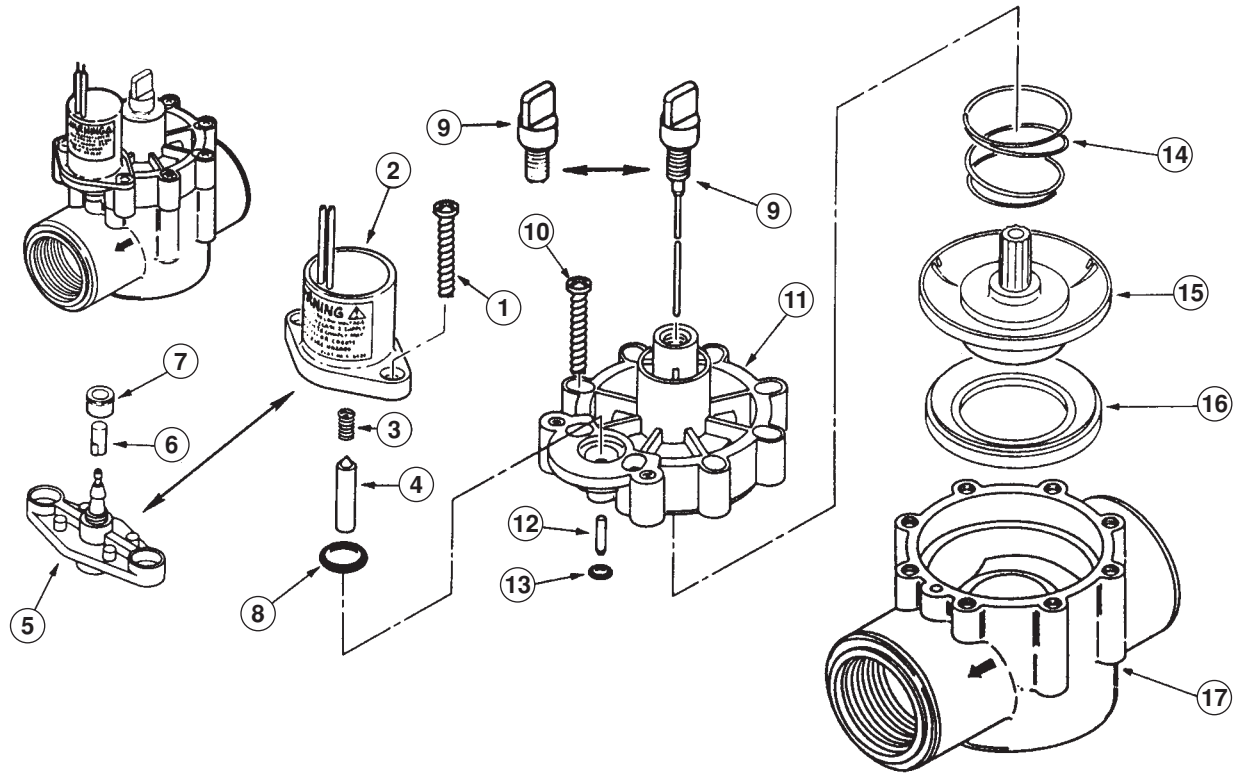
Item No.	Part No.	Description	Quantity Per Assy.
1	35-4521	Bleed Cap Assy., Fast-closing	1
1	35-1748	Bleed Cap, NO	1
2	35-3777	Knob, Handle, Cross	1
3	363-1493	Screw, #10 x 1"	2
4	35-3776	Adapter Assy., NO	1
5	*900-40	Retainer, Tube, NO	1
6	89-8157	Cap, Poly, NO	1
7	-----	Solenoid Assy., EL (See Service Item 89-0878)	1
8	9-6148	Spring, Plunger, Solenoid, EL	1
9	9-6527	Plunger Assy.	1
10	2-9652	O-Ring, 7/16" x 5/8"	1
11	363-4007	Screw, #10 x 1.25"	8
12	-----	Cap, Valve, w/FC, EL, Fast-closing (See Service Item 9-8182)	1
12	-----	Cap Assy. w/FC, NO (See Service Item 35-0767)	1
13	35-1983	Stem, Flow Control	1
14	360-0220	O-Ring, 0.070" x 0.551" x 0.691"	1
15	3-2016	Shaft, Idler, Lower, NO	1
16	1-2035	O-Ring, 0.070" x 0.114" x 0.254"	1
17	9-7110	Spring, Diaphragm, NO	1
18	35-2943	Diaphragm Assy., 1", NO	1
18	35-2824	Diaphragm Assy., 1", EL	1
19	9-6331	Support, Diaphragm	1
20	9-8311	Body Assy., M x M, 1"	1
21	35-1772	Body Assy., M x B, 1"	1
		SERVICE ITEMS	
	89-0878	Solenoid & Plunger Assy., EL (Includes Items 7–9)	
	35-0767	Cap Assy., w/Flow Control, NO (Includes Items 12–14)	
	35-9346	Bleed Cap Assy., w/Pin, EL	
	9-8182	Cap, Valve, w/FC, EL, (Includes Items 12–14)	
		* Order Through Finished Goods Distribution System—Minneapolis	

250 Series, 1 Inch



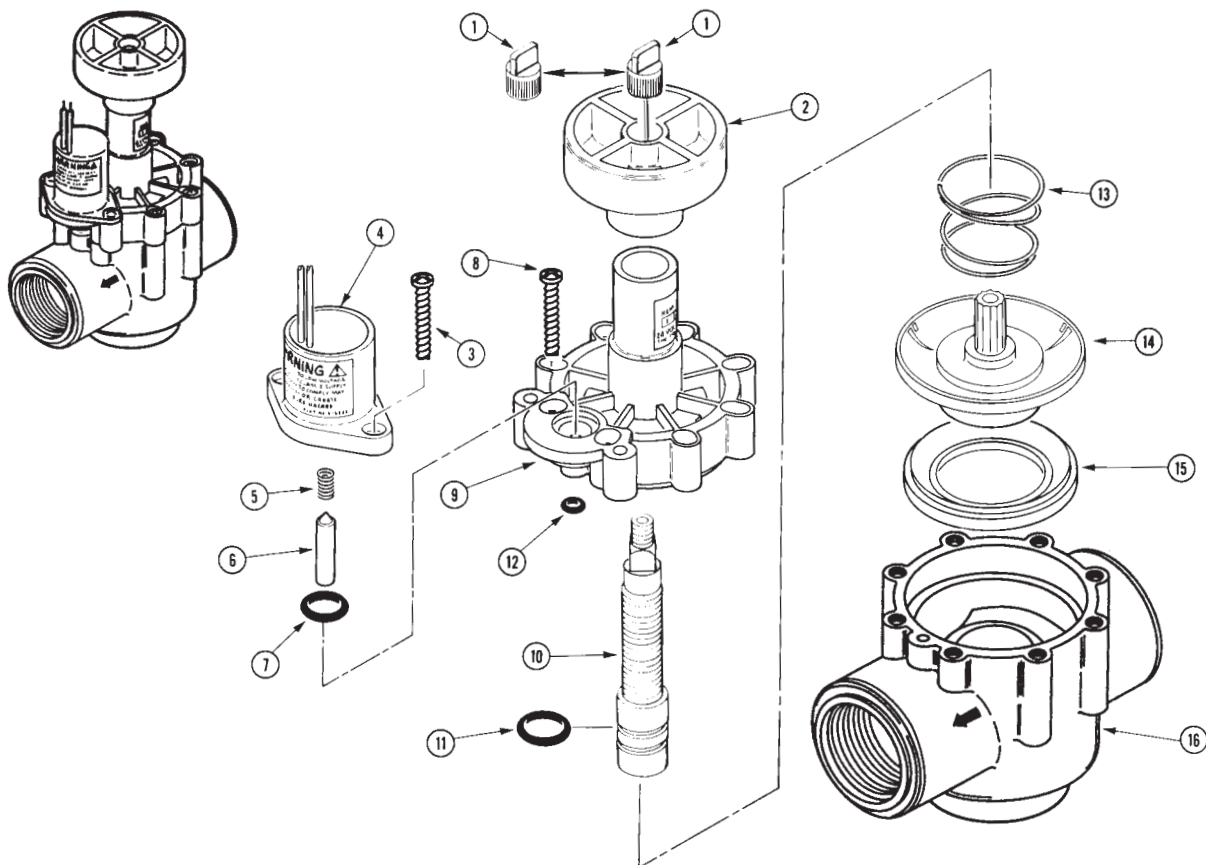
Item No.	Part No.	Description	Quantity Per Assy.
1	35-4521	Bleed Cap Assy. w/Pin, EL, Fast-closing	1
1	35-1748	Bleed Cap, NO & PT	1
1	89-7855	Bleed Cap, Effluent	1
2	35-3777	Knob, Handle, Cross	1
3	363-1493	Screw, #10 x 1"	2
4	35-3776	Adapter, NO & PT	1
5	*900-40	Retainer, Tube, NO & PT	1
6	89-8157	Cap, Poly, NO & PT	1
7	-----	Solenoid Assy., EL (See Service Item 89-0878)	1
8	9-6148	Spring, Plunger, Solenoid, EL	1
9	9-6527	Plunger Assy., EL	1
10	2-9652	O-Ring, 7/16" x 5/8"	1
11	363-1493	Screw, #10 x 1"	8
12	-----	Cap Assy., EL (See Service Item 9-8182)	1
12	-----	Cap Assy., NO & PT (See Service Item 35-0767)	1
13	35-1983	Stem, Flow Control	1
14	360-0220	O-Ring, 0.070" x 0.551" x 0.691"	1
15	3-2016	Shaft, Idler, Lower, NO & PT	1
16	1-2035	O-Ring, 0.070" x 0.114" x 0.254"	1
17	9-4425	Spring, Diaphragm, PT	1
17	9-7110	Spring, Diaphragm, EL & NO	1
18	35-2943	Diaphragm Assy., 1", NO	1
18	35-2824	Diaphragm Assy., 1", EL	1
18	35-3655	Diaphragm Assy., 1", PT	1
19	9-6331	Support, Diaphragm	1
20	9-6809	Body Assy., In-line Globe, NPT	1
20	35-1970	Body Assy., In-line Globe, BSP	1
SERVICE ITEMS			
	89-0878	Solenoid & Plunger Assy., EL (Includes Items 7-9)	
	35-3503	Diaphragm Assy., EL, Service Kit	
	9-5197	Screen, Filter, 3/4" (Used with 35-3503 Diaphragm Assy.)	
	9-6548	Plug, Communication, Diaphragm (Used with 35-3655 Diaphragm Assy., PT)	
	9-8182	Cap Assy., (Includes Items 12-14)	
	35-0767	Cap Assy., NO & PT (Includes Items 12-14)	
	35-9346	Bleed Cap Assy., Slow-closing	
* Order Through Finished Goods Distribution System-Minneapolis			

260 Series, 1 Inch



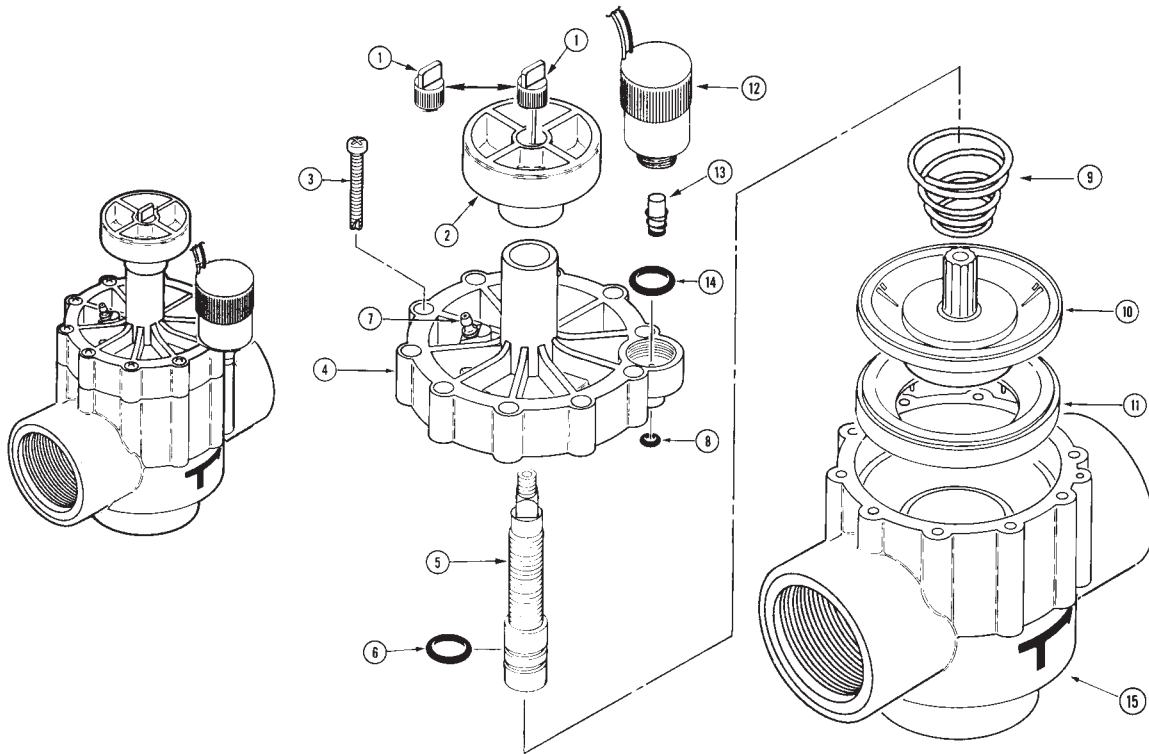
Item No.	Part No.	Description	Quantity Per Assy.
1	363-1493	Screw, #10 x 1"	2
2	-----	Solenoid Assy. (See Service Item 89-0878)	1
3	9-6148	Spring, Plunger, Solenoid	1
4	9-6527	Plunger Assy.	1
5	35-3776	Adapter, NO & PT	1
6	89-8157	Cap, Poly, NO & PT	1
7	*900-40	Retainer, Tube, NO & PT.	1
8	2-9652	O-Ring, 7/16" x 5/8"	1
9	35-2941	Bleed Screw Assy. w/Pin, EL	1
9	35-2673	Bleed Screw, NO & PT	1
10	363-1493	Screw, #10 x 1"	8
11	9-8313	Cap, Valve without FC, EL	1
11	9-7291	Cap, Valve without FC, NO & PT	1
12	3-2016	Shaft, Idler, Lower, NO & PT	1
13	1-2035	O-Ring, 0.070" x 0.114" x 0.254"	1
14	9-7110	Spring, Diaphragm, EL & NO	1
14	9-4425	Spring, Diaphragm, PT.	1
15	35-2943	Diaphragm Assy., 1", NO	1
15	35-2824	Diaphragm Assy., 1", EL	1
15	35-3655	Diaphragm Assy., 1", PT	1
16	9-6331	Support, Diaphragm	1
17	9-6809	Body Assy., Globe, NPT	1
17	35-1970	Body Assy., Globe, BSP	1
SERVICE ITEMS			
	89-0878	Solenoid & Plunger Assy., EL (Includes Items 2-4)	
	35-3503	Diaphragm Assy., EL, Service Kit	
	9-5197	Screen, Filter, 3/4" (Used with 35-3503 Diaphragm Assy.)	
	9-6548	Plug, Communication, Diaphragm (Used with 35-3655)	
	35-9354	Bleed Cap, Fast-closing, NO	
	9-6548	Plug, Communication, Diaphragm (Used with 35-3655)	
	35-9354	Bleed Screw Assy., w/Pin, EL, Slow-closing	
* Order Through Finished Goods Distribution System—Minneapolis			

252 Series, 1 Inch



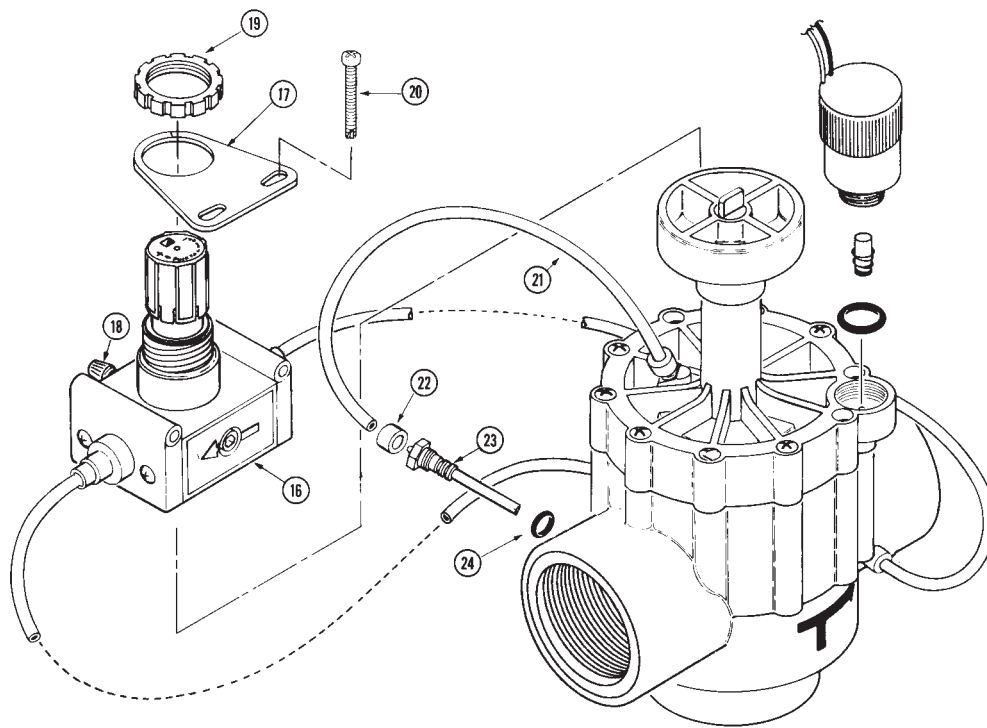
Item No.	Part No.	Description	Quantity Per Assy.
1	35-4521	Bleed Cap Assy., w/Pin, EL, Fast-closing	1
1	35-1748	Bleed Cap Assy., w/o Pin, NO & PT	1
2	35-3777	Knob, Handle Cross	1
3	363-1493	Screw, #10 x 1"	2
4	-----	Solenoid Assy. (See Service Item 89-0878)	1
5	9-6148	Spring, Plunger, Solenoid	1
6	9-6527	Plunger Assy.	1
7	2-9652	O-Ring, 7/16" x 5/8"	1
8	363-1493	Screw, #10 x 1"	8
9	-----	Cap Assy., EL, w/FC, (See Service Item 35-8182)	1
10	35-1983	Stem, Flow Control	1
11	360-0220	O-Ring, 0.070" x 0.551" x 0.691"	2
12	1-2035	O-Ring, 0.070" x 0.114" x 0.254"	1
13	9-7110	Spring, Diaphragm	1
14	35-2824	Diaphragm Assy., 1", EL	1
15	9-6331	Support, Diaphragm	1
16	9-6811	Body Assy., 1", NPT	1
16	35-1971	Body Assy., 1", BSP	1
N/I	9-7706	Plug, Pipe, 1"	1
SERVICE ITEMS			
	89-7855	Bleed Cap Assy., w/o Pin, NO & PT, Effluent	
	89-0878	Solenoid & Plunger Assy. (Includes Items 4–6)	
	9-8182	Cap Assy. (Includes Items 9–11)	
	35-3503	Diaphragm Assy., EL, Service Kit	
	9-5197	Screen, Filter, 3/4" (Used in 35-3503 Diaphragm Assy.)	
	35-9346	Bleed Cap Assy., w/Pin, Slow-closing	

252 Series, 1.5 Inch (Sheet 1 of 2)



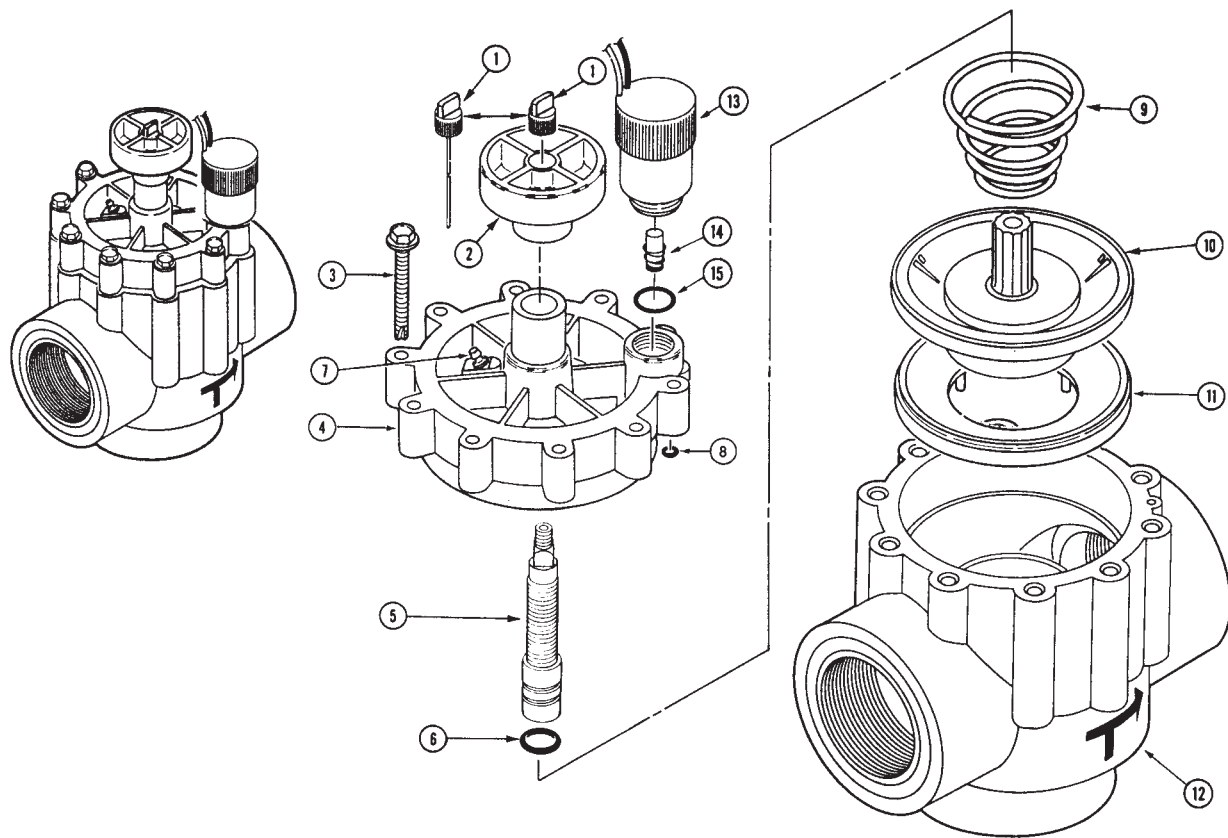
Item No.	Part No.	Description	Quantity Per Assy.
1	35-4521	Bleed Cap Assy. w/Pin, EL	1
1	35-1748	Bleed Cap, NO and PT, PR & CR	1
1	89-7855	Bleed Cap, Effluent	1
2	35-3777	Knob, Handle Cross	1
3	360-0203	Screw, Tap, #10, SST	10
4	-----	Cap, Valve, EL (See Service Items)	1
4	-----	Cap, Valve, NO & PT (See Service Items)	1
4	-----	Cap, Valve, PR (See Service Items)	1
4	-----	Cap, Valve, CR (See Service Items)	1
5	35-1983	Stem, Flow Control	1
6	360-0220	O-Ring, 0.070" x 0.551" x 0.691"	2
7	9-6791	Connector, Poly	1
8	1-2035	O-Ring, 0.070" x 0.114" x 0.254", EL, PR & CR	1
9	9-4425	Spring, Diaphragm	1
10	89-0812	Diaphragm Assy., EL	1
10	89-0814	Diaphragm Assy., PT	1
10	89-0813	Diaphragm Assy., NO, PR & CR	1
11	89-6110	Support, Diaphragm	1
12	89-1905	Solenoid Assy., EL, PR & CR	1
13	35-4609	Plunger Assy., EL, PR & CR	1
14	360-0220	O-Ring, 0.070" x 0.551" x 0.691", EL, PR & CR	1
15	9-7100	Body Assy., NO & PT, NPT	1
15	9-7238	Body Assy., EL, NPT	1
15	35-1972	Body Assy., NO & PT, BSP	1
15	35-1973	Body Assy., EL, BSP	1
15	35-4937	Body Assy., PR, NPT	1
15	35-5642	Body Assy., PR, BSP	1
15	89-4805	Body Assy., CR, NPT	1
15	89-6036	Body Assy., CR, BSP	1

252 Series, 1.5 Inch (Sheet 2 of 2)



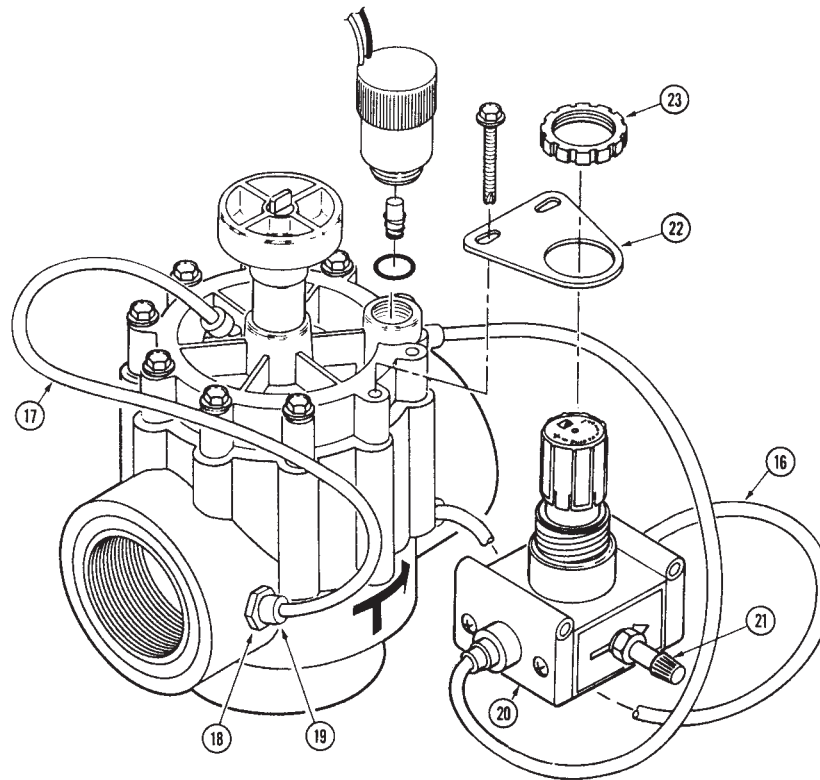
Item No.	Part No.	Description	Quantity Per Assy.
16	363-3141	Regulator, Water Pressure, Plastic Valve, PR	1
17	35-3444	Bracket, Regulator, PR	1
18	363-1762	Valve, 1/8", PR, NPT	1
19	363-1894	Nut, Regulator, PR	1
20	360-0203	Screw, #10-25 x 1-3/4", PR	2
21	9-2623	Tube, 1/4" x 8", PR & CR	3
21	9-2624	Tube, 1/4" x 11.5", CR	1
22	*900-40	Retainer, Tube, PR & CR	6
23	35-4619	Filter Assy., 1/4", Regulator, PR & CR	1
24	360-0494	O-Ring, 0.070" x 0.426" x 0.566", PR & CR	1
SERVICE ITEMS			
	35-3099	Solenoid Assy., EL and PR & CR (Includes Items 12 & 13)	
	89-8157	Cap, Poly, NO & PT	
	2-3013	Plug, Cap	
	35-9346	Bleed Screw, Fast, 1" & 1.5"	
	35-0595	Cap Assy., Valve, EL (Includes Items 4–6)	
	35-0769	Cap Assy., Valve, NO & PT (Includes Items 4–7)	
	35-4935	Cap Assy., Valve, PR & CR (Includes Items 4–7)	
	35-4926	Regulator Assy., Plastic Valve, PR (Includes Items 16–19)	
	360-0630	Plug, Pipe, 1.5", NPT	
	89-0817	Kit, Diaphragm, 1.5", EL (Includes Items 10 & 11)	
	89-0818	Kit, Diaphragm, 1.5", NO (Includes Items 10 & 11)	
	89-0814	Kit, Diaphragm, 1.5", PT (Includes Items 10 & 11)	
	89-9453	Kit, Service, Valve, 1.5", NO (Includes Items 1, 2, 9, 10, 11 & 35-0769 Valve Cap Assy.)	
	89-3853	Kit, Service, Valve, 1.5", EL (252) (Includes Items 1, 2, 6, 8, 9, 10 & 35-0595 Valve Cap Assy.)	
	89-3892	Kit, Service, Valve, 1.5", PT (Includes Items 1, 2, 9, 10, 11 & 35-0769 Valve Cap Assy.)	
* Order Through Finished Goods Distribution System—Minneapolis			

252 Series, 2 Inch (Sheet 1 of 2)



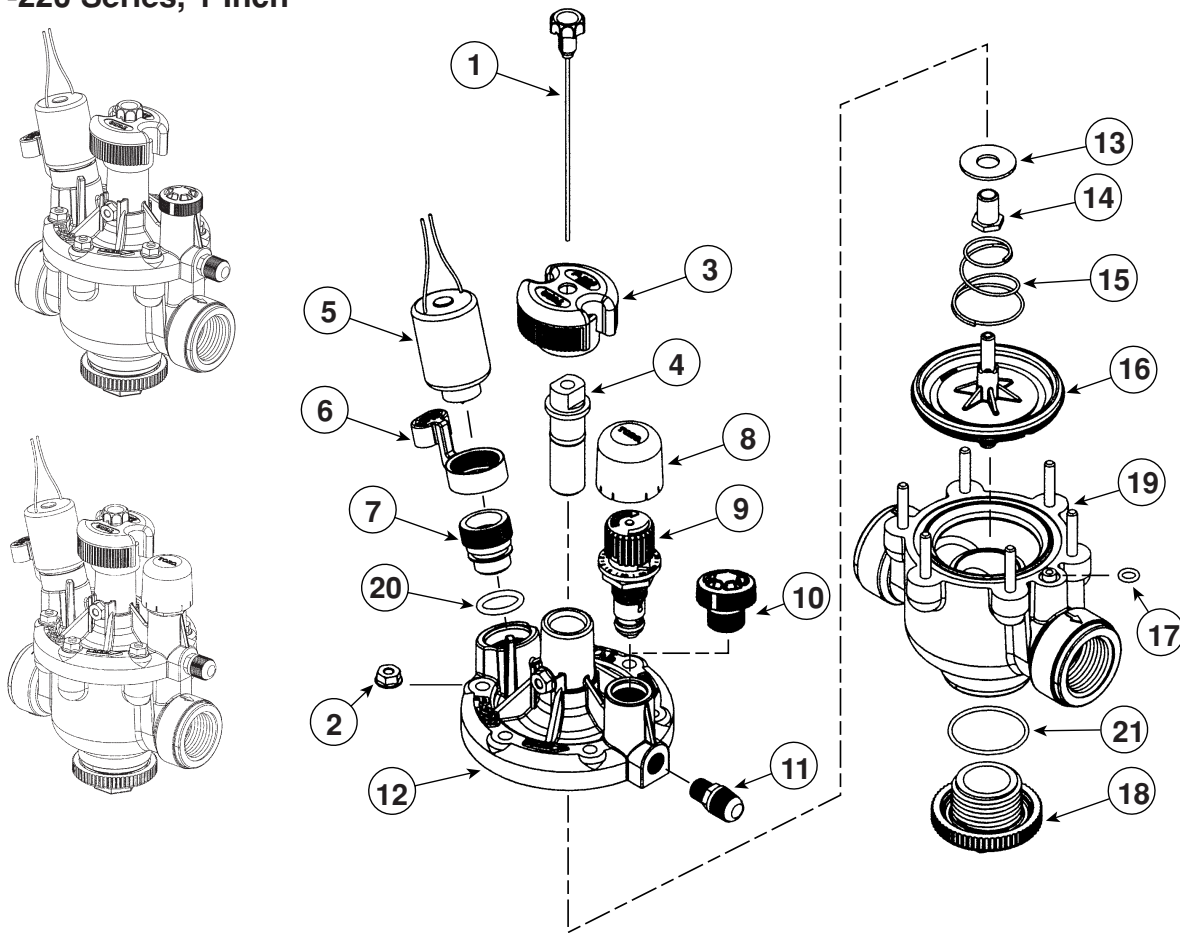
Item No.	Part No.	Description	Quantity Per Assy.
1	35-3892	Bleed Cap Assy. with Pin, EL	1
1	35-1748	Bleed Cap, NO, PR & CR	1
2	35-3777	Knob, Handle Cross	1
3	363-1399	Screw, Hex, Washer, 1/4-14 x 2"	10
4	-----	Cap, Valve (See Service Items)	1
5	35-1983	Stem, Flow Control	1
6	360-0220	O-Ring, 0.070" x 0.551" x 0.691"	2
7	9-6791	Connector, Poly, NO & PR	1
8	1-2035	O-Ring, 0.070" x 0.114" x 0.254"	1
9	9-6940	Spring, Diaphragm, EL, PR & CR	1
9	9-4425	Spring, Diaphragm, NO	1
10	89-0815	Diaphragm Assy., EL	1
10	89-0816	Diaphragm Assy., NO, PR & CR	1
11	9-6504	Support, Diaphragm	1
12	9-7258	Body Assy., EL & NO, NPT	1
12	35-1974	Body Assy., EL & NO, BSP	1
12	35-4943	Body Assy., PR, NPT	1
12	35-5645	Body Assy., PR, BSP	1
12	89-4807	Body Assy., CR, NPT	1
12	89-6035	Body Assy., CR, BSP	1
13	89-1905	Solenoid Assy.	1
14	35-4609	Plunger Assy.	1
15	360-0220	O-Ring, 0.070" x 0.551" x 0.691"	1

252 Series, 2 Inch (Sheet 2 of 2)



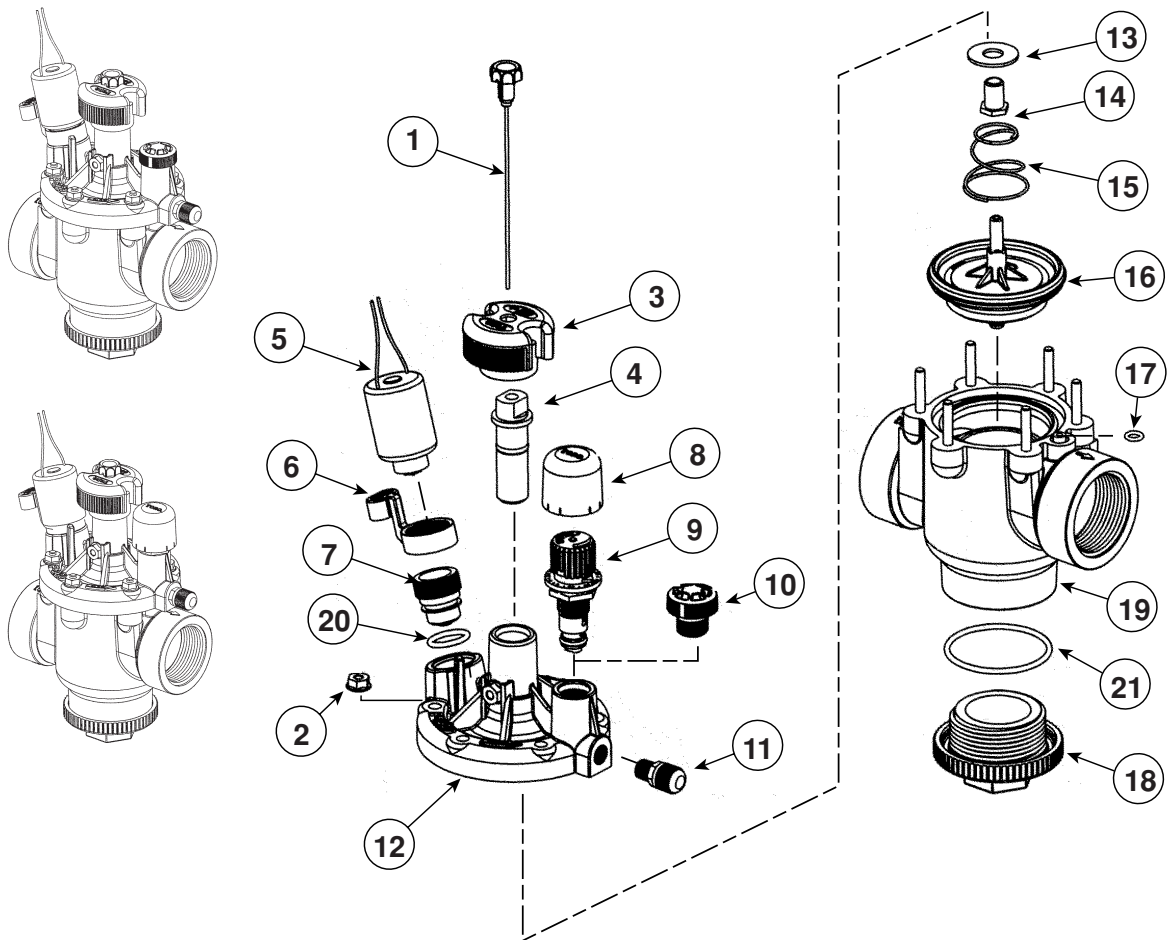
Item No.	Part No.	Description	Quantity Per Assy.
16	9-2623	Tube, 1/4" x 8", PR	1
17	9-1876	Tube, 1/4" x 12", PR and CR	2
18	35-4931	Filter Assy., Regulator, .034", PR and CR (Includes O-Ring)	1
19	*900-40	Retainer, Tube, PR and CR	4
20	363-3141	Regulator Assy., Pressure, PR	1
21	363-1762	Valve, Shrader, 1/8" NPT, PR	1
22	35-3444	Bracket, Regulator, PR	1
23	363-1894	Nut, Regulator, PR	1
SERVICE ITEMS			
	35-3099	Solenoid Assy., EL and PR (Includes Items 13 & 14)	
	360-0631	Plug, Pipe, 2", NPT	
	35-5154	Plug, Pipe, 2", BSP	
	89-3854	Diaphragm Kit, EL (Includes Item 10 & 11)	
	89-3855	Diaphragm Kit, NO (Includes Item 10 & 11)	
	35-0596	Cap Assy., Valve, EL (Includes Item 4-6)	
	35-0768	Cap Assy., Valve, NO (Includes Item 4-7)	
	35-4940	Cap Assy., Valve, PR (Includes Item 4-7)	
	89-4806	Cap Assy., Valve, CR (Includes Items 4-7)	
	35-4926	Regulator Assy., Valve, Plastic, PR (Includes Items 20-23)	
	89-0806	Bleed Screw, Fast, 2"	
	360-0494	O-Ring, 0.070" x 0.426" x 0.566", PR and CR	
* Order Through Finished Goods Distribution System—Minneapolis			

P-220 Series, 1 Inch



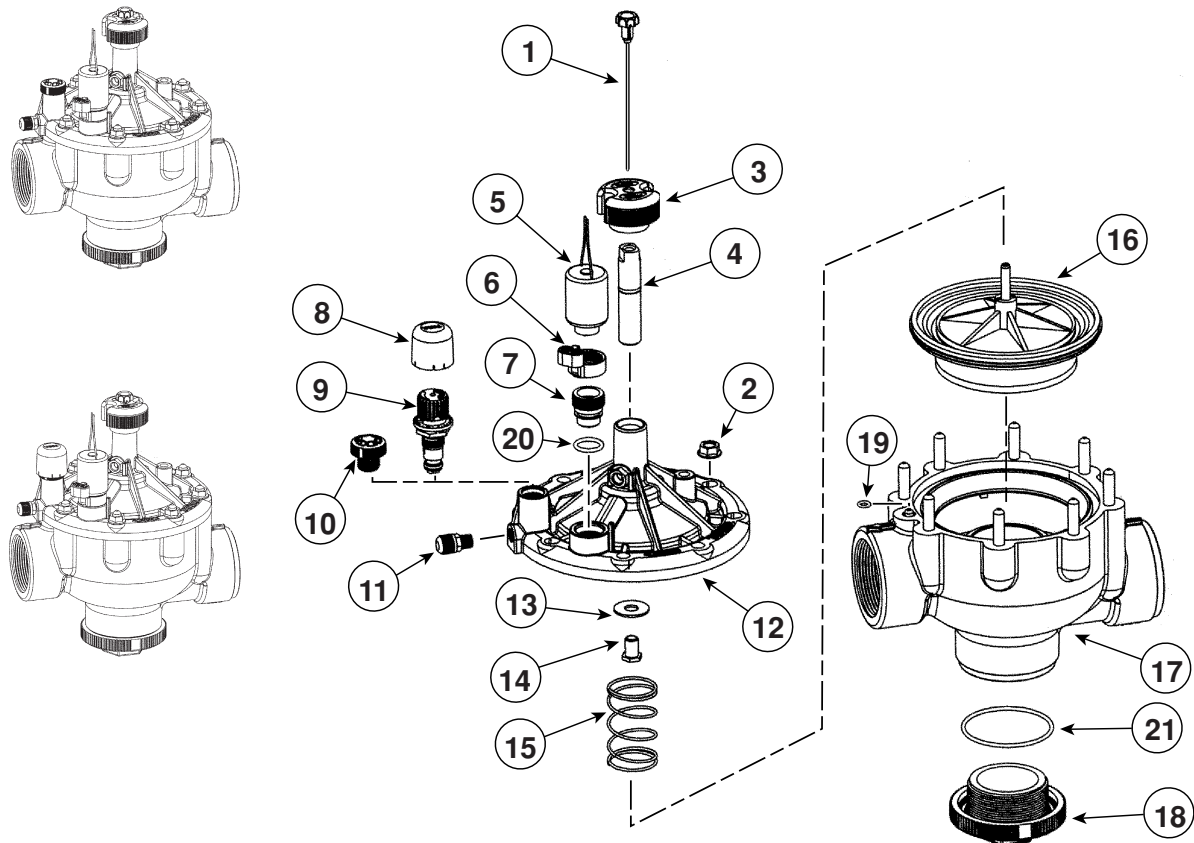
Item No.	Part No.	Description	Quantity Per Assy.
1	102-3756	Metering Rod Assy., P-220	1
2	845101	Hex Nut, Flanged	7
3	89-9780	Handle, Flow Control	1
4	102-0966	Stem Assy., Flow Control	1
5	102-0842	Solenoid Assy., 60 Hz	1
5	102-0927	Solenoid Assy., 50 Hz	1
6	1081501	Handle, Bleed Plug	1
7	1009605	Bleed Plug	1
8	835203	Cap, Vandal Resistant	1
9	*EZR-30	Regulator Module, 30 psi (Includes Item 8)	1
9	*EZR-100	Regulator Module, 100 psi (Includes Item 8)	1
10	89-9521	Blanking Plug Assy.	1
11	834101	Valve Assy., Schrader	1
12	102-0366	Bonnet Assy.	1
13	856202	Stem Washer	1
14	1033-H	Bushing	1
15	H1040	Spring	1
16	102-0368	Diaphragm Assy.	1
17	1054-H	O-Ring, Body	1
18	536203	Plug, Body, NPT & BSP	1
19	-----	Valve Body Assy.	1
20	1009701	O-Ring, Bleed Plug	1
21	2413	O-Ring, Body Plug	1
	SERVICE ITEMS		
	102-0847	Assy., Kit, Service, 1" & 1.5", P-220 (Includes Items 1–3, 10–12 and 15)	
		* Order Through Finished Goods Distribution System—Minneapolis	

P-220 Series, 1.5 Inch



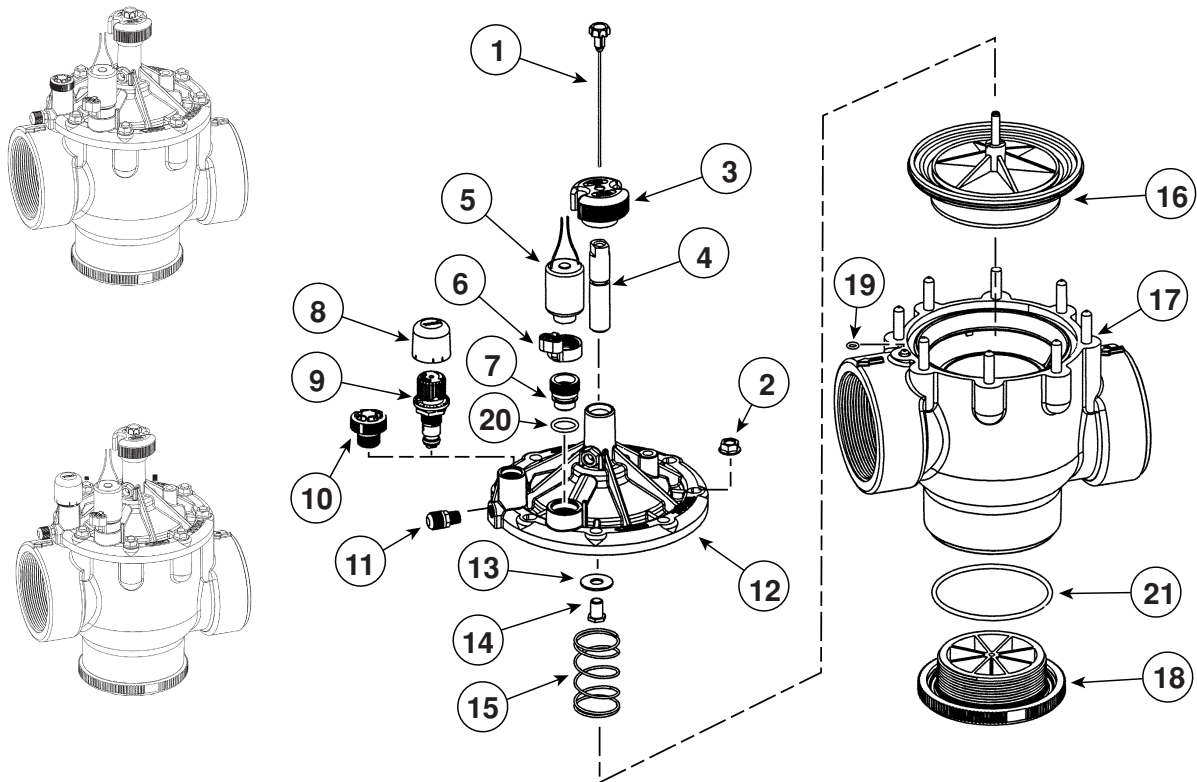
Item No.	Part No.	Description	Quantity Per Assy.
1	102-3756	Metering Rod Assy., P-220	1
2	845101	Hex Nut, Flanged	7
3	89-9780	Handle, Flow Control	1
4	102-0966	Stem Assy., Flow Control	1
5	102-0842	Solenoid Assy., 60 Hz	1
5	102-0927	Solenoid Assy., 50 Hz	1
6	1081501	Handle, Bleed Plug	1
7	1009605	Bleed Plug	1
8	835203	Cap, Vandal Resistant	1
9	*EZR-30	Regulator Module, 30 psi (Includes Item 8)	1
9	*EZR-100	Regulator Module, 100 psi (Includes Item 8)	1
10	89-9521	Blanking Plug Assy.	1
11	834101	Valve Assy., Schrader	1
12	102-0366	Bonnet Assy.	1
13	856202	Stem Washer	1
14	1033-H	Bushing	1
15	H1040	Spring	1
16	102-0770	Diaphragm Assy.	1
17	1054-H	O-Ring, Body	1
18	209406	Plug, Body, NPT & BSP	1
19	-----	Body, Brass	1
20	1009701	O-Ring, Bleed Plug	1
21	RS100-135-70N	O-Ring, Body Plug	1
		SERVICE ITEMS	
	102-0847	Assy., Kit, Service, 1" & 1.5", P-220 (Includes Items 1–3, 10–12 and 15)	
		* Order Through Finished Goods Distribution System—Minneapolis	

P-220 Series, 2 Inch



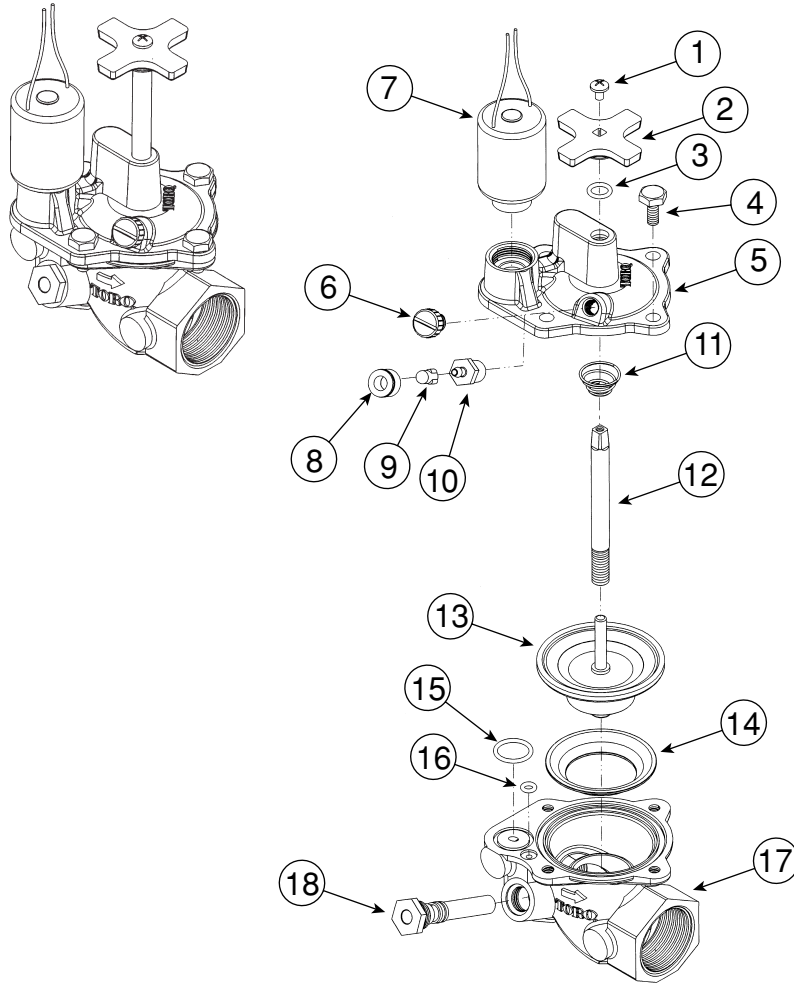
Item No.	Part No.	Description	Quantity Per Assy.
1	102-3756	Metering Rod Assy., P-220	1
2	845102	Hex Nut, Flanged	9
3	89-9780	Handle, Flow Control	1
4	102-0967	Stem Assy., Flow Control	1
5	102-0842	Solenoid Assy., 60 Hz	1
5	102-0927	Solenoid Assy., 50 Hz	1
6	1081501	Handle, Bleed Plug	1
7	1009605	Bleed Plug	1
8	835203	Cap, Vandal Resistant	1
9	*EZR-30	Regulator Module, 30 psi (Includes Item 8)	1
9	*EZR-100	Regulator Module, 100 psi (Includes Item 8)	1
10	89-9521	Blanking Plug Assy.	1
11	834101	Valve Assy., Schrader	1
12	102-0367	Bonnet Assy.	1
13	1126	Stem Washer	1
14	1033-H	Bushing	1
15	1041	Spring	1
16	934501	Diaphragm Assy.	1
17	1054-H	O-Ring, Body	1
18	209506-H	Plug, Body, NPT	1
18	209507	Plug, Body, BSP	1
19	-----	Body, Brass	1
20	1009701	O-Ring, Bleed Plug	1
21	935901	O-Ring, Body Plug	1
	SERVICE ITEMS		
	102-0848	Assy., Kit, Service, 2" & 3" P-220 (Includes Items 1–3, 10–12 and 15)	
* Order Through Finished Goods Distribution System—Minneapolis			

P-220 Series, 3 Inch



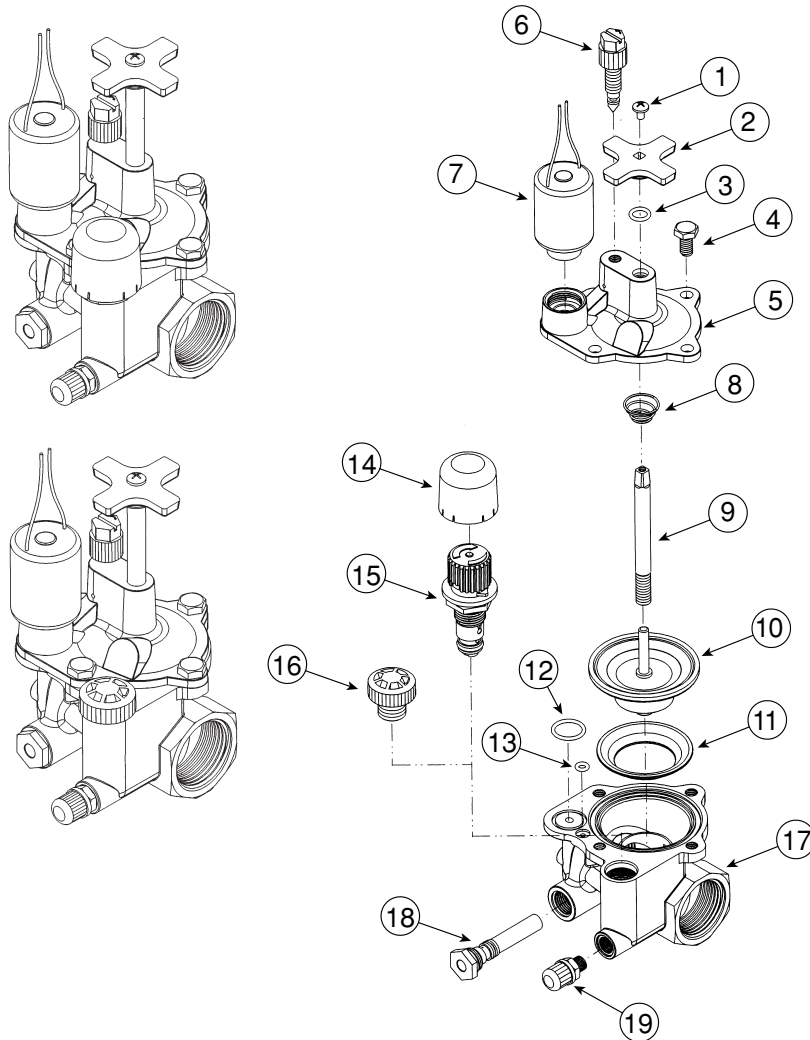
Item No.	Part No.	Description	Quantity Per Assy.
1	102-3756	Metering Rod Assy., P-220	1
2	845102	Hex Nut, Flanged	9
3	89-9780	Handle, Flow Control	1
4	102-0967	Stem Assy., Flow Control	1
5	102-0842	Solenoid Assy., 60 Hz	1
5	102-0927	Solenoid Assy., 50 Hz	1
6	1081501	Handle, Bleed Plug	1
7	1009605	Bleed Plug	1
8	835203	Vandal Cap	1
9	*EZR-30	Regulator Module, 30 psi (Includes Item 8)	1
9	*EZR-100	Regulator Module, 100 psi (Includes Item 8)	1
10	89-9521	Blanking Plug Assy.	1
11	834101	Valve Assy., Schrader	1
12	102-0367	Bonnet Assy.	1
13	1126	Stem Washer	1
14	1033-H	Bushing	1
15	1041	Spring	1
16	935001	Diaphragm Assy.	1
17	1054-H	O-Ring, Body	1
18	209605-H	Plug, Body, NPT	1
18	209606-H	Plug, Body, BSP	1
19	-----	Valve Body Assy.	1
20	1009701	O-Ring, Bleed Plug	1
21	RS100-238-70N	O-Ring, Body Plug	1
		SERVICE ITEMS	
	102-0848	Assy., Kit, Service, 2" & 3" P-220 (Includes Items 1–3, 10–12 and 15)	
		* Order Through Finished Goods Distribution System—Minneapolis	

220 Series, 1 Inch (Previous 210 Series, 1 Inch)



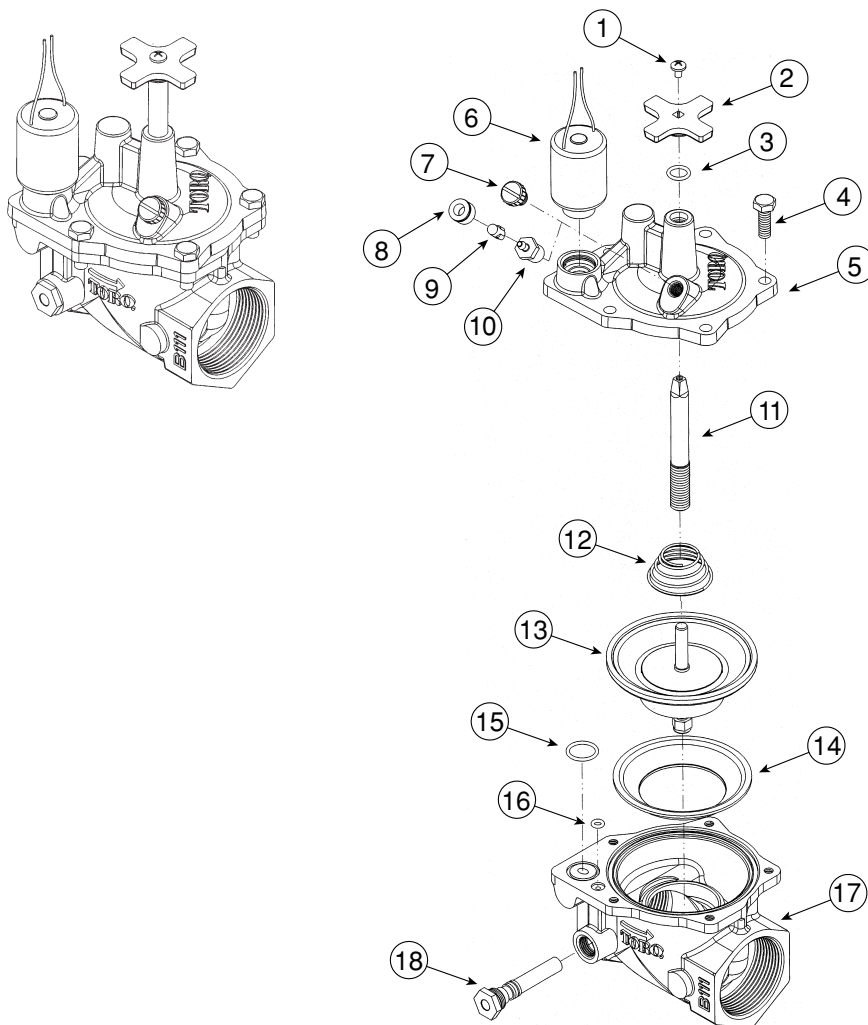
Item No.	Part No.	Description	Quantity Per Assy.
1	360-0498	Screw, Machine 8-32 x 1/4"	
2	9-4527	Handle, Cross	1
3	360-0107	O-Ring, 0.070" x 0.301" x 0.441"	1
4	360-0595	Screw, Machine, 1/4-20 x 1/2"	4
5	89-9542	Cap, Valve, EL	1
5	89-5823	Cap, Valve, NO	1
6	89-9566	Screw Assy., External Bleed, EL	1
7	102-0842	Solenoid Assy., 24 V a.c., 60 Hz	1
7	102-0927	Solenoid Assy., 24 V a.c., 50 Hz	1
8	*1-1108	Retainer, Tube, NO	1
9	89-8157	Cap, 1/4" Poly, NO	1
10	3-3362	Adapter, 1/8 NPT x 1/4" Poly, NO	1
11	9-5146	Spring, Diaphragm	1
12	89-6507	Stem, Flow Control	1
13	9-5359	Diaphragm Assy., 1.5" & 1.25" Brass	1
14	35-2639	Support, Diaphragm	1
15	360-0220	O-Ring, 0.070" x 0.551" x 0.691", EL	1
16	360-0530	O-Ring, 0.070" x 0.145" x 0.285", EL	1
17	-----	Body, Valve, 1"	1
18	102-0690	Filter Assy., Metering, 1" & 1.5"	1
* Order Through Finished Goods Distribution System—Minneapolis			

220 Series, 1 Inch, Pressure Regulated



Item No.	Part No.	Description	Quantity Per Assy.
1	360-0498	Screw, Machine 8-32 x 1/4"	1
2	9-4527	Handle, Cross	1
3	360-0107	O-Ring, 0.070" x 0.301" x 0.441"	1
4	360-0595	Screw, Machine, 1/4-20 x 1/2"	4
5	89-9538	Cap, Valve	1
6	102-0208	Bleed Screw Assy.	1
7	102-0842	Solenoid Assy., 24 V a.c., 60 Hz	1
7	102-0927	Solenoid Assy., 24 V a.c., 50 Hz	1
8	9-5146	Spring, Diaphragm	1
9	89-6507	Stem, Flow Control	1
10	9-5359	Diaphragm Assy., 1"	1
11	35-2639	Support, Diaphragm	1
12	360-0220	O-Ring, 0.070" x 0.551" x 0.691"	1
13	360-0530	O-Ring, 0.707" x 0.145" x 0.285"	1
14	835203	Cap, Vandal Resistant	1
15	*EZR-30	Regulator Module, 30 psi (Includes Item 14)	1
15	*EZR-100	Regulator Module, 100 psi (Includes Item 14)	1
16	89-9521	Blanking Plug Assy.	1
17	-----	Body, Brass	1
18	102-0690	Filter Assy., Metering, 1"-1.5"	1
19	834101	Valve Assy., Schrader	1
* Order Through Finished Goods Distribution System—Minneapolis			

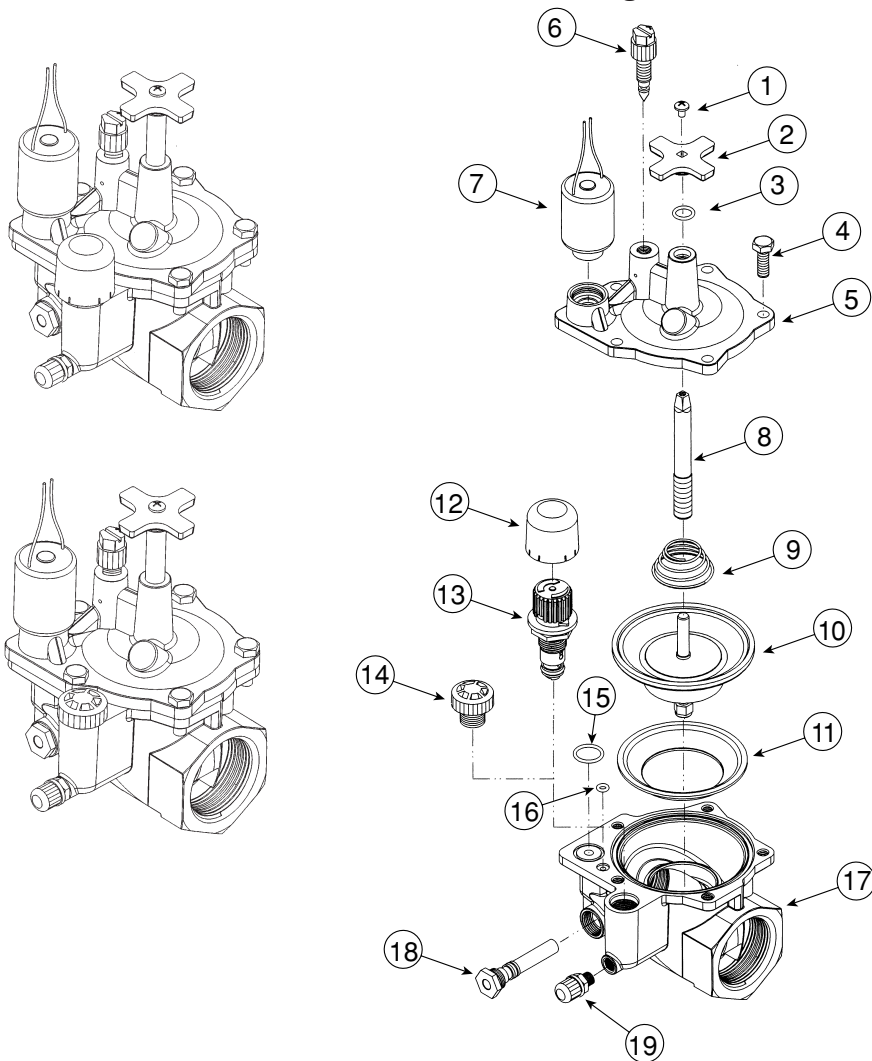
220 Series, 1.25 and 1.5 Inch (Previous 210 Series, 1.25 and 1.5 Inch)



Item No.	Part No.	Description	Quantity Per Assy.
1	360-0498	Screw, Machine 8-32 x 1/4"	1
2	9-4527	Handle, Cross	1
3	360-0493	O-Ring, 0.070" x 0.364" x 0.504"	1
4	360-0499	Screw, Machine, 1/4-20 x 3/4"	5
5	89-9543	Cap, Valve, EL	1
5	89-5827	Cap, Valve, NO	1
6	102-0842	Solenoid Assy., 24 V a.c., 60 Hz	1
6	102-0927	Solenoid Assy., 24 V a.c., 50 Hz	1
7	89-9566	Screw Assy., External Bleed, EL	1
8	*1-1108	Retainer Tube, NO	1
9	89-8157	Cap, 1/4" Poly, NO.	1
10	3-3362	Adapter, 1/8 NPT x 1/4" Poly, NO	1
11	9-4424	Stem, Flow Control	1
12	102-0637	Spring, Diaphragm	1
13	9-5361	Diaphragm Assy., 1.5" & 1.25"	1
14	35-2452	Support, Diaphragm	1
15	360-0220	O-Ring, 0.070" x 0.551" x 0.691", EL	1
16	360-0530	O-Ring, 0.070" x 0.145" x 0.285", EL	1
17	-----	Body, Brass	1
18	102-0690	Filter Assy., Metering 1"-1.5"	1

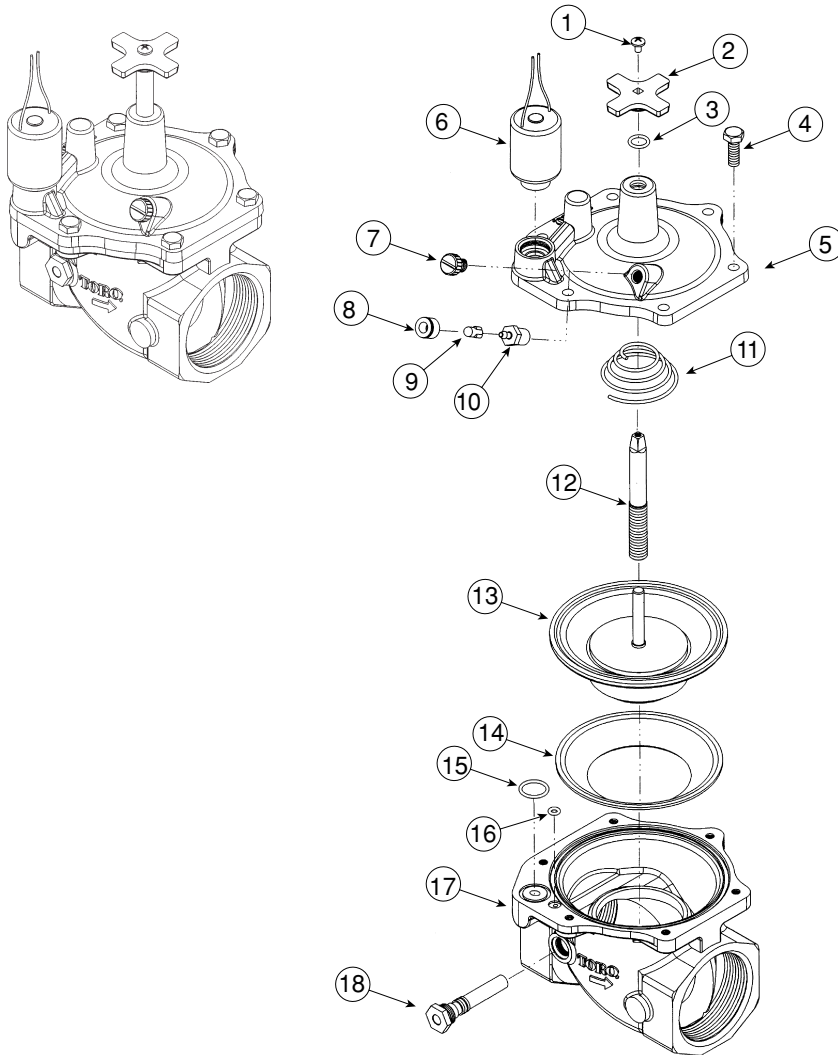
* Order Through Finished Goods Distribution System—Minneapolis

220 Series, 1.25 and 1.5 Inch, Pressure Regulated



Item No.	Part No.	Description	Quantity Per Assy.
1	360-0498	Screw, Machine 8-32 x 1/4"	1
2	9-4527	Handle, Cross	1
3	360-0493	O-Ring, 0.070" x 0.364" x 0.504"	1
4	360-0499	Screw, Machine, 1/4-20 x 3/4"	5
5	89-9539	Cap, Valve	1
6	102-0208	Bleed Screw Assy.	1
7	102-0842	Solenoid Assy., 24 V a.c., 60 Hz	1
7	102-0927	Solenoid Assy., 24 V a.c., 50 Hz	1
8	9-4424	Stem, Flow Control	1
9	102-0637	Spring, Diaphragm	1
10	9-5361	Diaphragm Assy.	1
11	35-2452	Support, Diaphragm	1
12	835203	Vandal Cap	1
13	*EZR-30	Regulator Module, 30 psi (Includes Item 12)	1
13	*EZR-100	Regulator Module, 100 psi Includes Item 12)	1
14	89-9521	Blanking Plug Assy.	1
15	360-0220	O-Ring, 0.070" x 0.551" x 0.691"	1
16	360-0530	O-Ring, 0.070" x 0.145" x 0.285"	1
17	-----	Body, Brass	1
18	102-0691	Filter Assy., Metering, 1"-1.5"	1
19	834101	Valve Assy., Schrader	1
* Order Through Finished Goods Distribution System—Minneapolis			

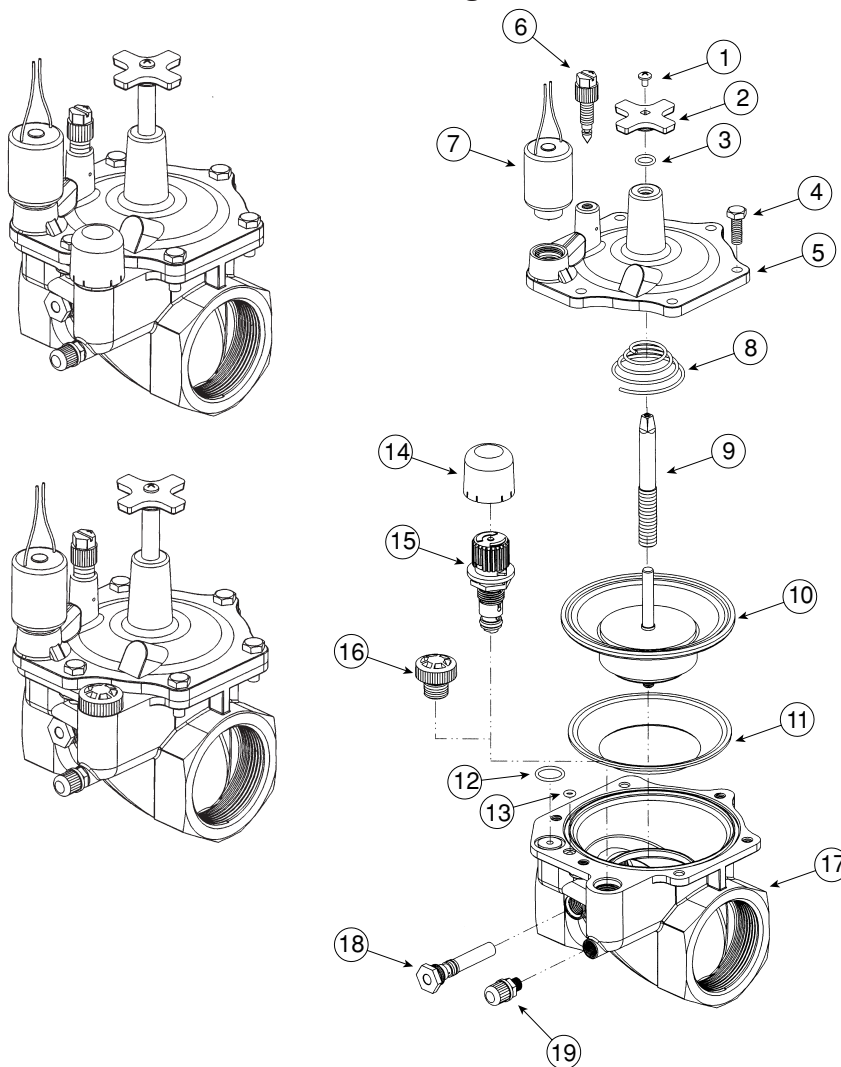
220 Series, 2 Inch (Previous 210 Series, 2 Inch)



Item No.	Part No.	Description	Quantity Per Assy.
1	360-0498	Screw, Machine 8-32 x 1/4"	1
2	9-4527	Handle, Cross	1
3	360-0493	O-Ring, 0.070" x 0.364" x 0.504"	1
4	360-0499	Screw, Machine, 1/4-20 x 3/4"	6
5	89-9544	Cap, Valve, EL	1
5	89-5831	Cap, Valve, NO	1
6	102-0842	Solenoid Assy., 24 V a.c., 60 Hz	1
6	102-0927	Solenoid Assy., 24 V a.c., 50 Hz	1
7	89-9566	Screw Assy., External Bleed, EL	1
8	*1-1108	Retainer Tube, NO	1
9	89-8157	Cap, 1/4" Poly, NO	1
10	3-3362	Adapter, 1/8 NPT x 1/4 Poly, NO.	1
11	89-1652	Spring, Diaphragm	1
12	9-4543	Stem, Flow Control	1
13	9-5363	Diaphragm Assy., 2"	1
14	9-4541	Support, Diaphragm	1
15	360-0220	O-Ring, 0.070" x 0.551" x 0.691", EL	1
16	360-0530	O-Ring, 0.070" x 0.145" x 0.285", EL	1
17	-----	Body, Brass	1
18	102-0691	Filter Assy., Metering, 2"	1

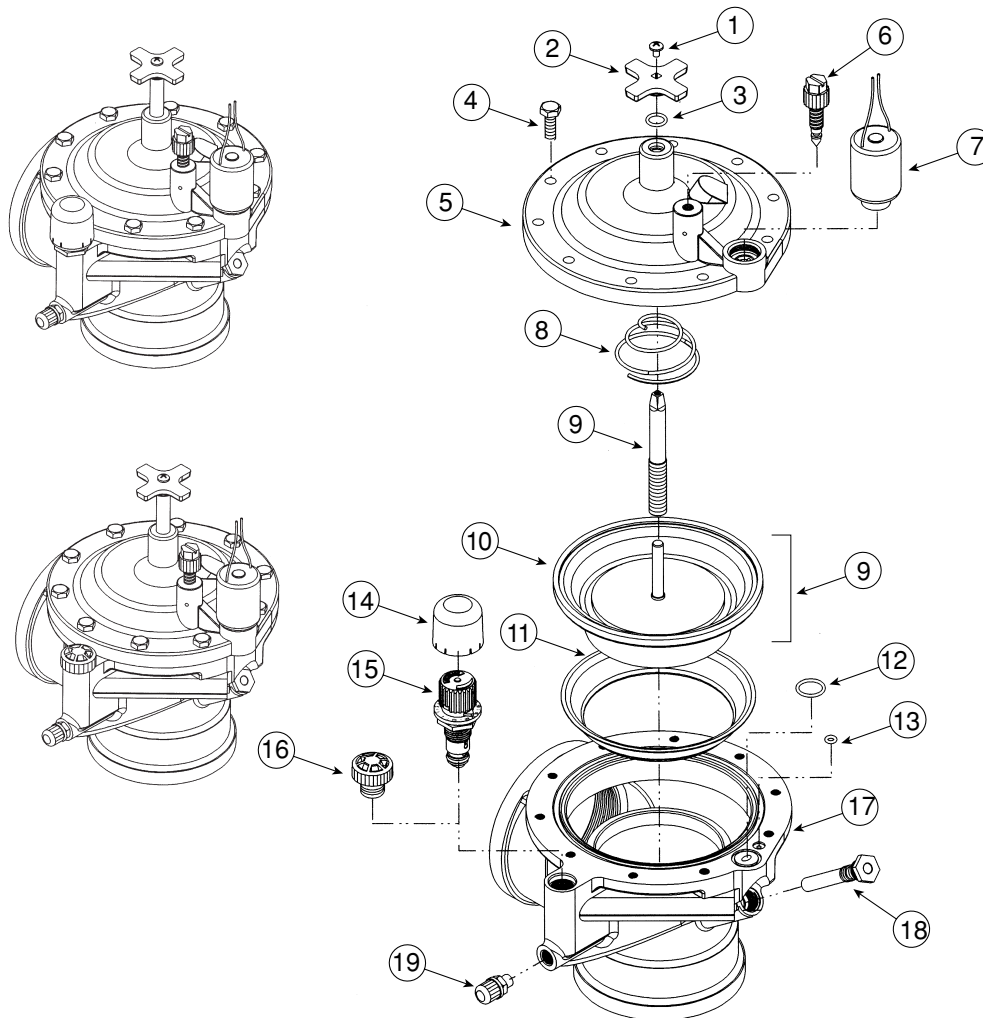
* Order Through Finished Goods Distribution System—Minneapolis

220 Series, 2 Inch, Pressure Regulated



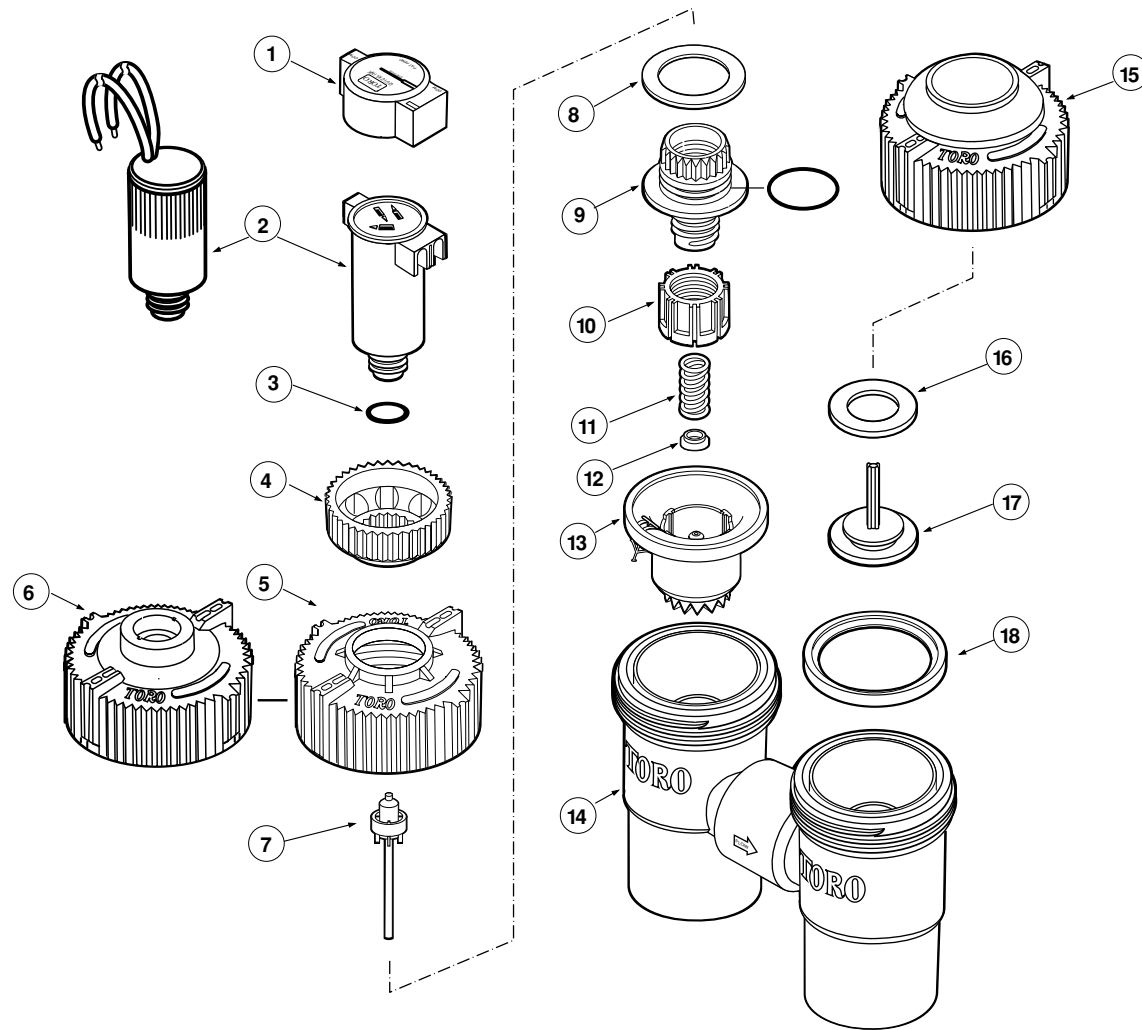
Item No.	Part No.	Description	Quantity Per Assy.
1	360-0498	Screw, Machine 8-32 x 1/4"	1
2	9-4527	Handle, Cross	1
3	360-0493	O-Ring, 0.070" x 0.364" x 0.504"	1
4	360-0499	Screw, Machine, 1/4-20 x 3/4"	6
5	89-9540	Cap, Valve	1
6	102-0208	Bleed Screw Assy.	1
7	102-0842	Solenoid Assy., 24 V a.c., 60 Hz	1
7	102-0927	Solenoid Assy., 24 V a.c., 50 Hz	1
8	89-1652	Spring, Diaphragm	1
9	9-4543	Stem, Flow Control	1
10	9-5363	Diaphragm Assy.	1
11	9-4541	Support, Diaphragm	1
12	360-0220	O-Ring, 0.070" x 0.551" x 0.691"	1
13	360-0530	O-Ring, 0.070" x 0.145" x 0.285"	1
14	835203	Cap, Vandal Resistant	1
15	*EZR-30	Regulator Module, 30 psi (Includes Item 14)	1
15	*EZR-100	Regulator Module, 100 psi (Includes Item 14)	1
16	89-9521	Blanking Plug Assy.	1
17	-----	Body	1
18	102-0691	Filter Assy., Metering, 2"	1
19	834101	Valve Assy., Schrader	1
* Order Through Finished Goods Distribution System—Minneapolis			

220 Series, 2.5 and 3 Inch



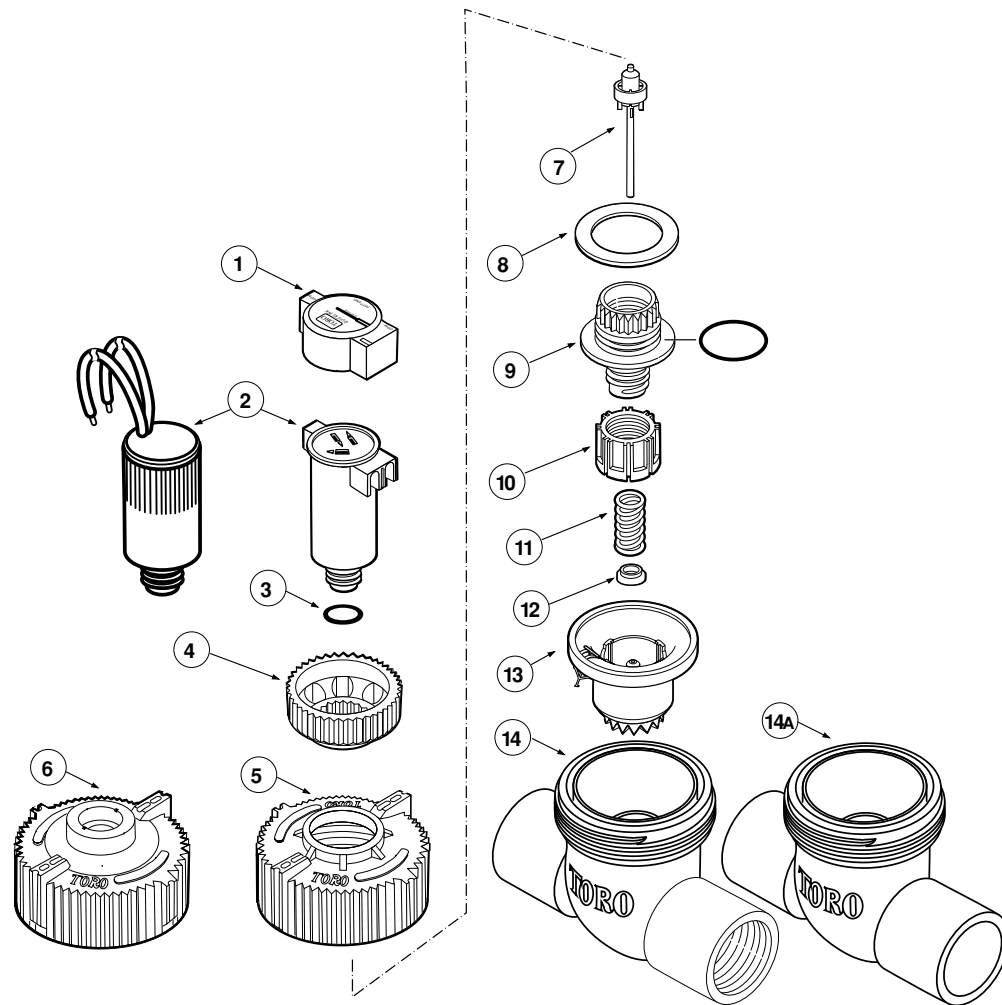
Item No.	Part No.	Description	Quantity Per Assy.
1	360-0498	Screw, Machine #8-32 x 1/4"	1
2	9-4527	Handle, Cross	1
3	360-0493	O-Ring, 0.070" x 0.364" x 0.504"	1
4	360-0499	Screw, Machine, 1/4-20 x 3/4"	10
5	89-9541	Cap, Valve	1
6	102-0208	Bleed Screw Assy.	1
7	102-0842	Solenoid Assy., 24 V a.c., 60 Hz	1
7	102-0927	Solenoid Assy., 24 V a.c., 50 Hz	1
8	89-1744	Spring, Diaphragm	1
9	9-4543	Stem, Flow Control	1
10	89-6421	Diaphragm Assy.	1
11	89-8126	Support, Diaphragm	1
12	360-0220	O-Ring, 0.070" x 0.551" x 0.691"	1
13	360-0530	O-Ring, 0.070" x 0.145" x 0.285"	1
14	835203	Cap, Vandal Resistant	1
15	*EZR-30	Regulator Module, 30 psi (Includes Item 12)	1
15	*EZR-100	Regulator Module, 100 psi (Includes Item 12)	1
16	89-9521	Blanking Plug Assy.	1
17	-----	Body, Brass	1
18	102-0692	Filter Assy., Metering	1
19	834101	Valve Assy., Schrader	1
* Order Through Finished Goods Distribution System—Minneapolis			

Flo-Pro Series, 3/4 & 1 Inch AVB



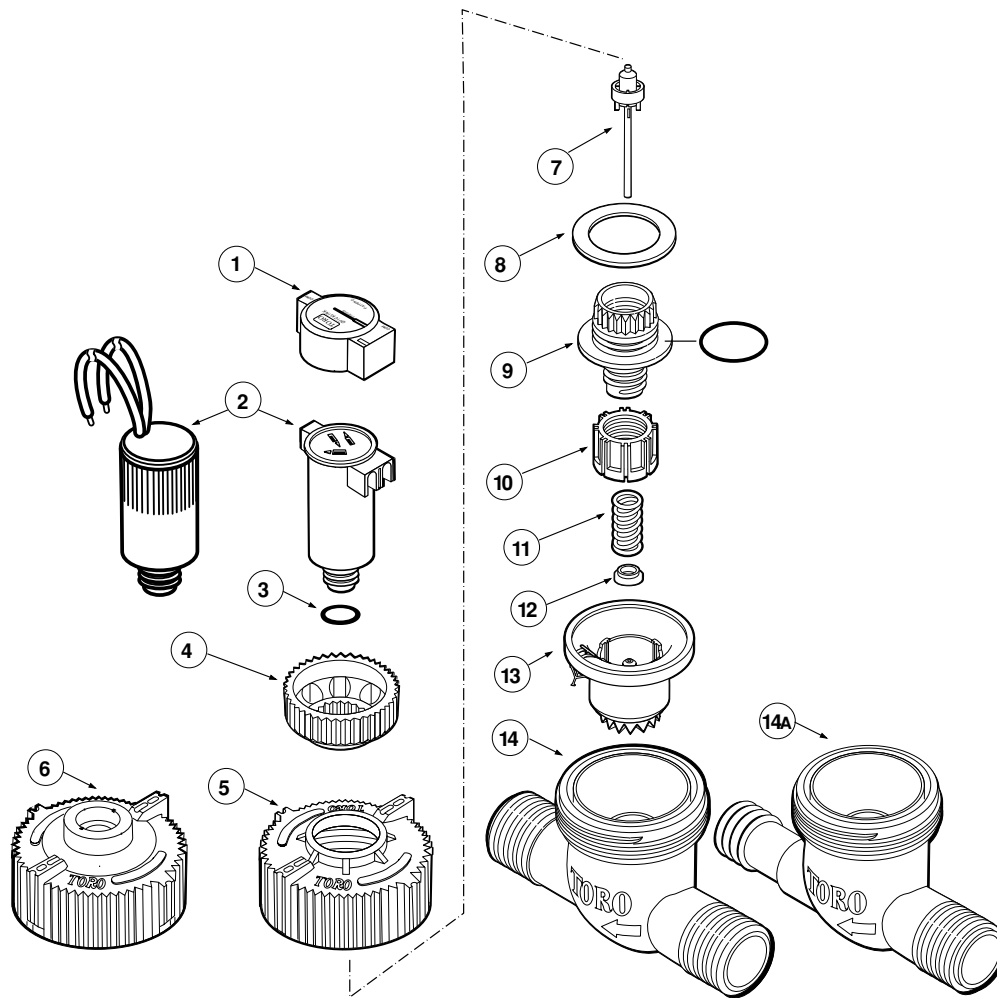
Item No.	Part No.	Description	Quantity Per Assy.
1	89-0880	Cap, Solenoid	1
2	89-0889	Solenoid Assy. w/o Wires (Includes Item 3)	1
2	89-0114	Solenoid Assy. w/Wires (Includes Item 3)	1
3	363-3138	O-Ring, 0.070" x 0.614"	1
4	35-8292	Knob (Flow Control Models)	1
5	89-9987	Cap (Flow Control Models)	1
6	89-9986	Cap (w/o Flow Control)	1
7	89-0069	Seat Assy., Discharge	1
8	89-1155	Washer, Teflon (Flow Control Models)	1
9	-----	Stem Assy., Flow Control (See Service Item 89-0142)	1
10	-----	Nut, Flow Control (See Service Item 89-0142)	1
11	89-2042	Spring, Diaphragm	1
12	89-3423	Bearing, Spring Sleeve (Flow Control Models)	1
13	89-9861	Diaphragm Assy. (Rubber, w/ Black Center Cup)	1
14	89-0665	Body Assy., AVB, 1"	1
14	89-1265	Body Assy., AVB, 3/4"	1
15	89-0120	Cap Assy.	1
16	35-8305	Seat, Float	1
17	35-8304	Float	1
18	89-1020	Seal	1
SERVICE ITEMS			
	89-4104	Drip Kit (Includes Items 9–12)	
	89-0142	Stem Assy., Flow Control (Includes Items 9, 10 and O-Ring)	
	89-2031	Diaphragm Assy., Old Style (Blue Debris Arrestor w/White Center Cup)	

Flo-Pro Series, 1 Inch Female



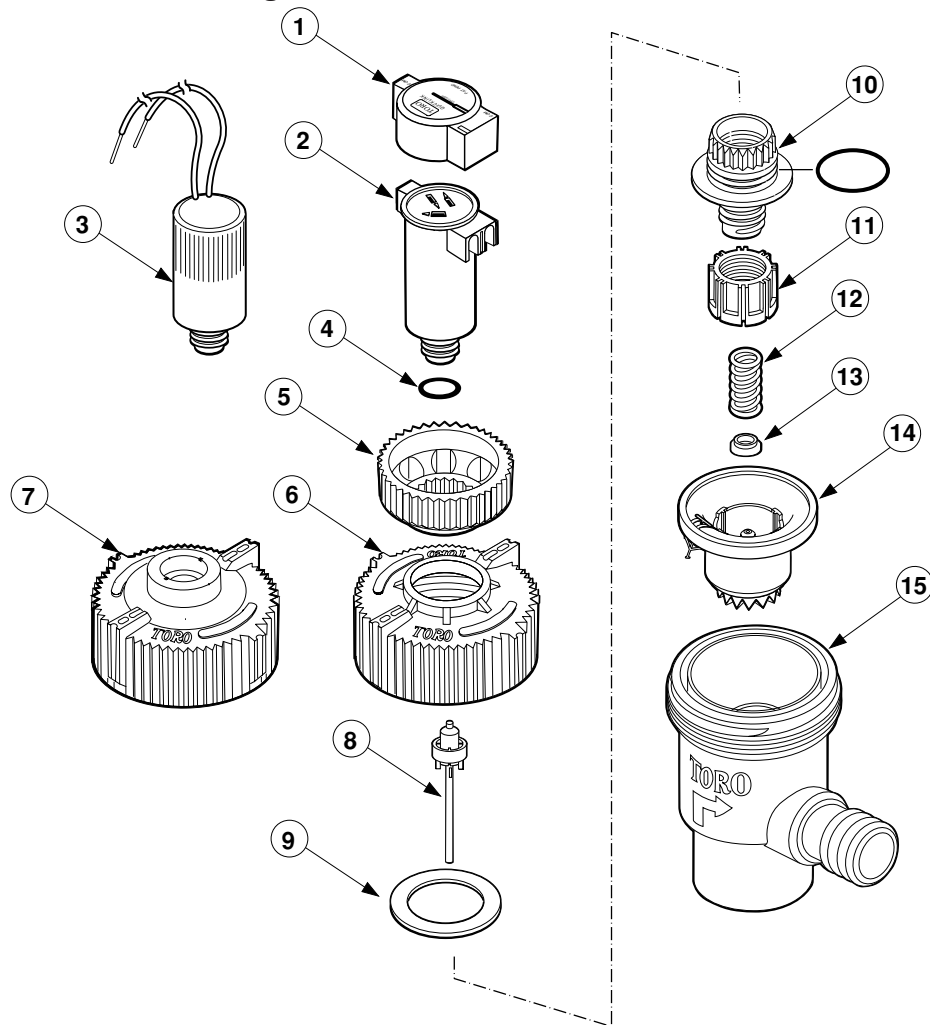
Item No.	Part No.	Description	Quantity Per Assy.
1	89-0880	Cap, Solenoid	1
2	89-0889	Solenoid Assy. w/o Wires (Includes Item 3)	1
2	89-0114	Solenoid Assy. w/Wires (Includes Item 3)	1
3	363-3138	O-Ring, 1/6" x 5/8"	1
4	35-8292	Knob (Flow Control Models)	1
5	89-9987	Cap (Flow Control Models)	1
6	89-9986	Cap (w/o Flow Control)	1
7	89-0069	Seat Assy., Discharge	1
8	89-1155	Washer, Teflon (Flow Control Models)	1
9	-----	Stem Assy., Flow Control (See Service Item 89-0142)	1
10	-----	Nut, Flow Control (See Service Item 89-0142)	1
11	89-2042	Spring, Diaphragm (Flow Control Models)	1
12	89-3423	Bearing, Spring Sleeve (Flow Control Models)	1
13	89-9861	Diaphragm Assy. (Rubber, w/Black Center Cup)	1
14	35-8234	Body, 1", F x F, NPT	1
14	35-8235	Body, 1", F x F, BSP	1
14A	35-8233	Body, 1", F x F, Slip	1
SERVICE ITEMS			
	89-4104	Drip Kit, Flow Control (Includes Items 9–12)	
	89-0142	Stem Assy., Flow Control (Includes Items 9, 10 and O-Ring)	
	89-0993	Diaphragm Assy., Old Style (Red Debris Arrestor, w/White Center Cup)	

Flo-Pro Series, 1 Inch Male



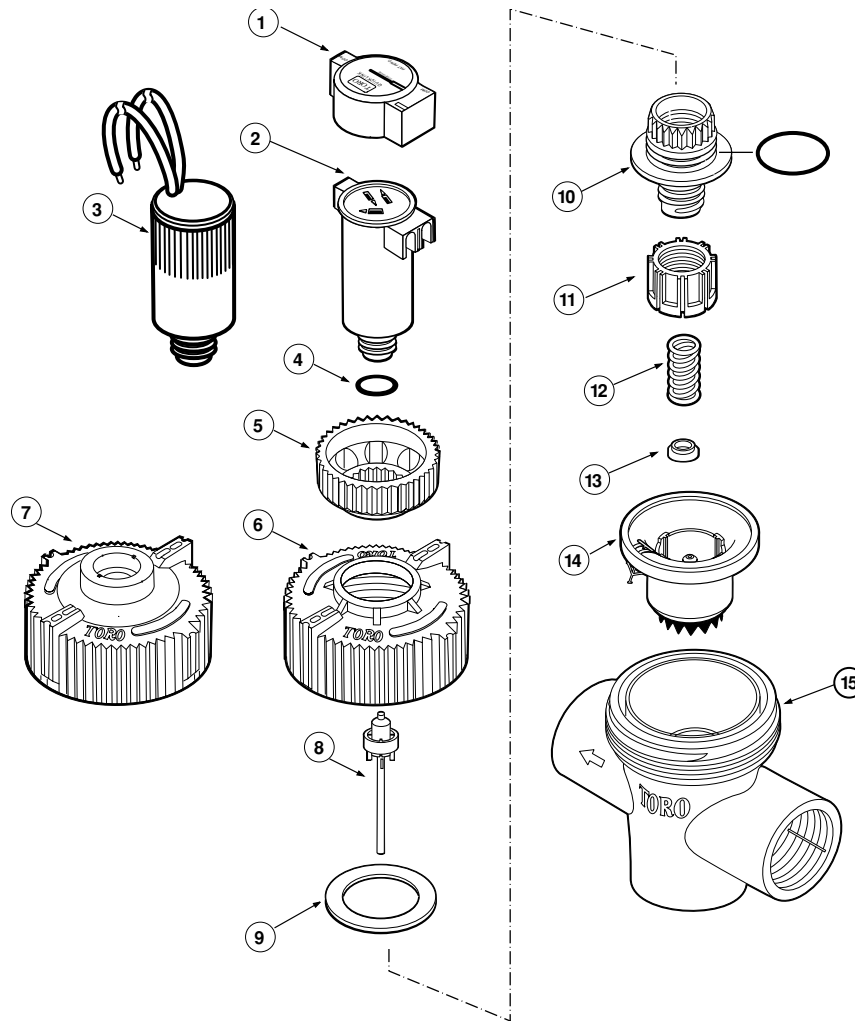
Item No.	Part No.	Description	Quantity Per Assy.
1	89-0880	Cap, Solenoid	1
2	89-0889	Solenoid Assy. w/o Wires (Includes Item 3)	1
2	89-0114	Solenoid Assy. w/Wires (Includes Item 3)	1
3	363-3138	O-Ring, 1/6" x 5/8"	1
4	35-8292	Knob (Flow Control Models)	1
5	89-9987	Cap (Flow Control Models)	1
6	89-9986	Cap (w/o Flow Control)	1
7	89-0069	Seat Assy., Discharge	1
8	89-1155	Washer, Teflon (Flow Control Models)	1
9	-----	Stem Assy., Flow Control (See Service Item 89-0142)	1
10	-----	Nut, Flow Control (See Service Item 89-0142)	1
11	89-2042	Spring, Diaphragm (Flow Control Models)	1
12	89-3423	Bearing, Spring Sleeve (Flow Control Models)	1
13	89-9861	Diaphragm Assy. (Rubber, w/Black Center Cup)	1
14	35-8192	Body, 1", M x M, NPT	1
14	35-8226	Body, 1", M x M, BSP	1
14A	35-8227	Body, 1", M x B, NPT	1
SERVICE ITEMS			
	89-4104	Drip Kit, Flow Control (Includes Items 9–12)	
	89-0142	Stem Assy., Flow Control (Includes Items 9, 10 and O-Ring)	
	89-0993	Diaphragm Assy., Old Style (Red Debris Arrestor, w/White Center Cup)	

Flo-Pro Series, 1 Inch Angle



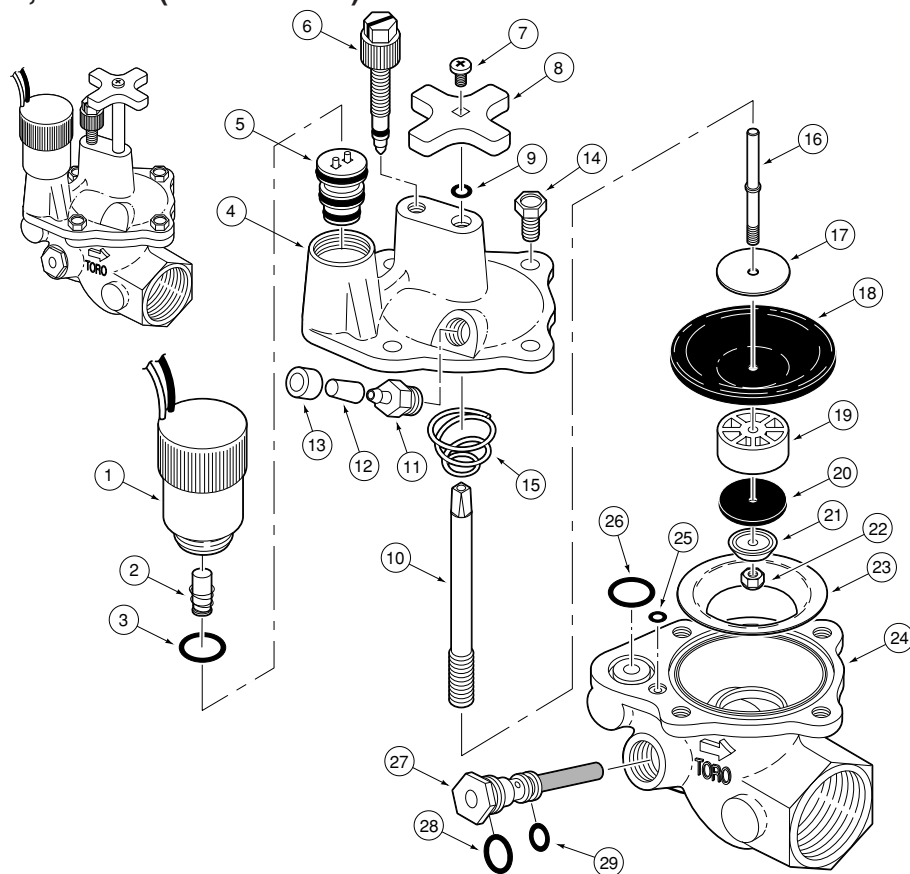
Item No.	Part No.	Description	Quantity Per Assy.
1	89-0880	Cap, Solenoid	1
2	89-0889	Solenoid Assy. w/o wires (Includes Items 1, 2 & 4)	1
3	89-0114	Solenoid Assy. with Wires (Includes Item 4)	1
4	363-3138	O-Ring, 1/6" x 5/8"	1
5	35-8292	Knob (Flow Control Models)	1
6	89-9987	Cap (Flow Control Models)	1
7	89-9986	Cap w/o Flow Control	1
8	89-0069	Seat Assy., Discharge	1
9	89-1155	Washer, Teflon (Flow Control Models)	1
10	-----	Stem Assy., Flow Control (See Service Item 89-0142)	1
11	-----	Nut, Flow Control (See Service Item 89-0142)	1
12	89-2042	Spring, Diaphragm	1
13	89-3423	Bearing, Spring Sleeve	1
14	89-9861	Diaphragm Assy. (Rubber, w/Black Center Cup)	1
15	89-3916	Body Assy., 1" F x B, NPT	1
	89-3917	Body Assy., 1" F x B, BSP	1
SERVICE ITEMS			
	89-4104	Drip Kit, Flow Control (Includes Items 10-13)	
	89-0142	Stem Assy., Flow Control (Includes Items 10, 11 and O-Ring)	
	89-0993	Diaphragm Assy., Old Style (Red Debris Arrestor, w/White Center Cup)	

Flo-Pro Series, 1 Inch Globe



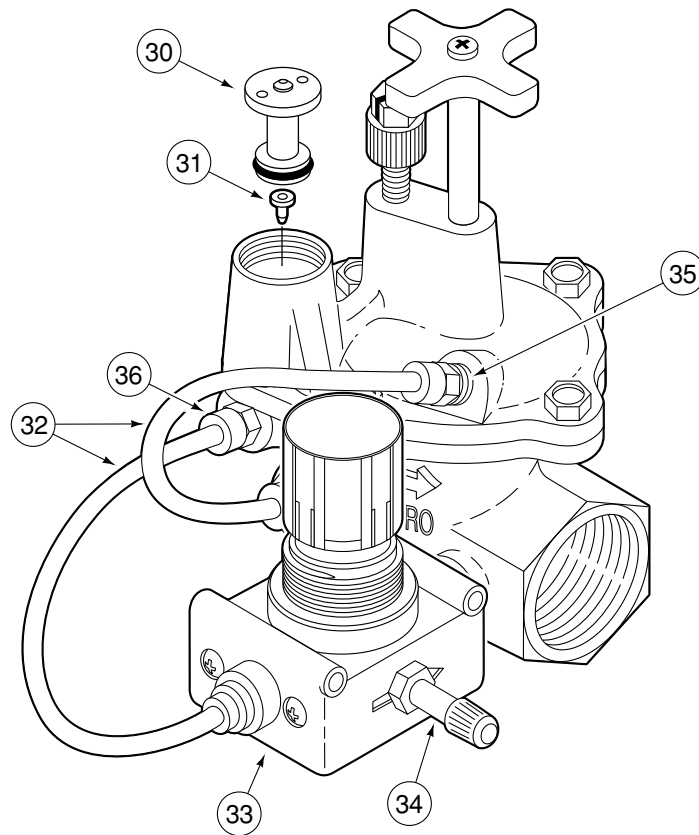
Item No.	Part No.	Description	Quantity Per Assy.
1	89-0880	Cap, Solenoid	1
2	89-0889	Solenoid Assy. w/o Wires (Includes Item 4)	1
3	89-0114	Solenoid Assy. with Wires (Includes Item 4)	1
4	363-3138	O-Ring, 1/6" x 5/8"	1
5	35-8292	Knob (Flow Control Models)	1
6	89-9987	Cap (Flow Control Models)	1
7	89-9986	Cap (w/o Flow Control)	1
8	89-0069	Seat Assy., Discharge	1
9	89-1155	Washer, Teflon (Flow Control Models)	1
10	-----	Stem Assy., Flow Control (See Service Item 89-0142)	1
11	-----	Nut, Flow Control (See Service Item 89-0142)	1
12	89-2042	Spring, Diaphragm	1
13	89-3423	Bearing, Spring Sleeve (Flow Control Models)	1
14	89-9861	Diaphragm Assy. (Rubber, w/Black Center Cup)	1
15	89-0117	Body Assy., 1", F x F x F, NPT	1
15	89-0118	Body Assy., 1", F x F x F, BSP	1
SERVICE ITEMS			
	89-4104	Drip Kit, Flow Control (Includes Items 10–13)	
	89-0142	Stem Assy., Flow Control (Includes Items 10, 11 and O-Ring)	
	89-0993	Diaphragm Assy., Old Style (Red Debris Arrestor, w/White Center Cup)	

216 Series, 1 Inch (Sheet 1 of 2)



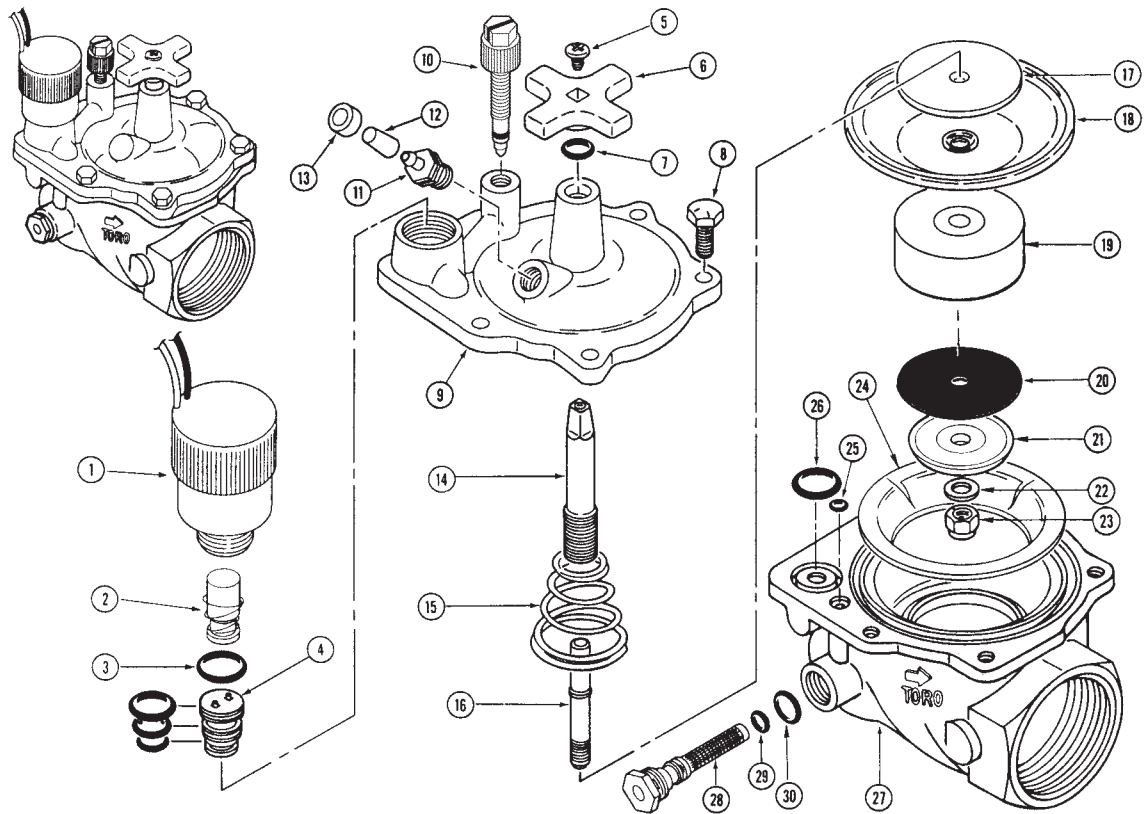
Item No.	Part No.	Description	Quantity Per Assy.
1	89-1673	Solenoid Assy.	1
2	35-4717	Plunger Assy., with Spring, EL	1
2	35-4609	Plunger Assy., with Spring, PR	1
3	360-0220	O-Ring, 0.070" x 0.551" x 0.691", EL & PR	1
4	89-5824	Cap, Valve, EL	1
4	89-5823	Cap, Valve, NO.	1
4	89-5825	Cap, Valve, PR	1
5	89-3407	Actuator Assy., EL (Includes O-Rings)	1
6	102-0208	Bleed Screw Assy.	1
7	360-0498	Screw, Machine #8-32 x 1/4"	1
8	9-4527	Handle, Cross	1
9	360-0107	O-Ring, 0.070" x 0.301" x 0.441"	1
10	89-6507	Stem, Flow Control, EL & PR (Includes Items 7 & 8)	1
11	*900-24	Adapter, Poly, NO	1
12	89-8157	Cap, Poly, NO Hyd.	1
13	*900-40	Retainer, Tube, NO & PR	1
14	360-0595	Screw, Machine, 1/4-20 x 1/2"	4
15	9-5146	Spring, Diaphragm	1
16	9-5552	Shaft, Diaphragm	1
17	9-4562	Plate, Support, Diaphragm Upper	1
18	9-4567	Diaphragm	1
19	35-2651	Spacer, Diaphragm	1
20	35-2857	Seat	1
21	35-7214	Retainer, Seat	1
22	360-0593	Nut, #10-24	1
23	35-2639	Support, Diaphragm	1

216 Series, 1 Inch (Sheet 2 of 2)



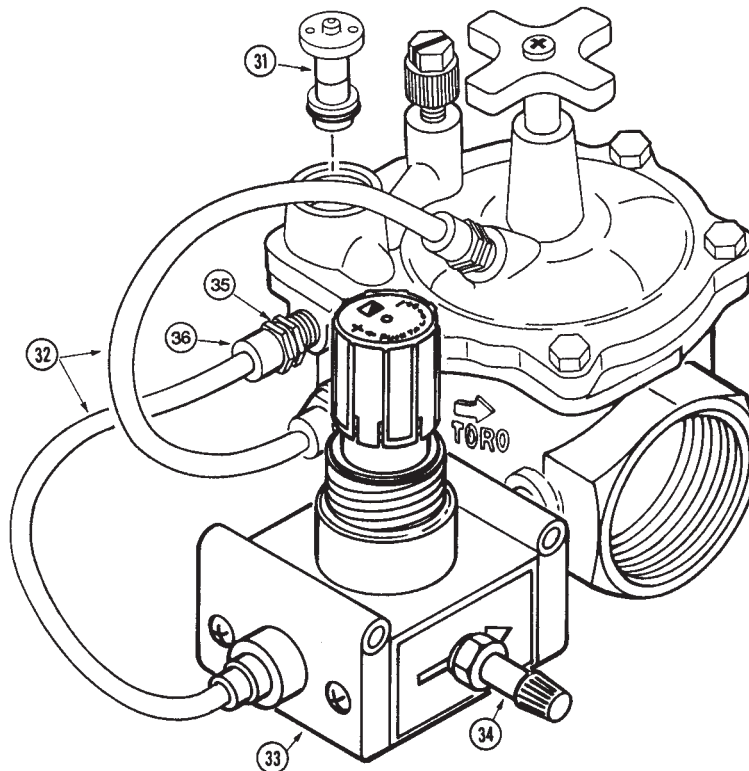
Item No.	Part No.	Description	Quantity Per Assy.
24	35-4953	Body, Valve, Brass, EL, NPT	1
24	35-4959	Body, Valve, Brass, NO, NPT	1
24	35-5755	Body, Valve, Brass, EL, BSP	1
24	35-4963	Body, Valve, Brass, PR, NPT	1
24	35-5759	Body, Valve, Brass, PR, BSP	1
24	35-5757	Body, Valve, Brass, NO, BSP	1
25	360-0530	O-Ring, 0.070" x 0.145" x 0.285", EL and PR	1
26	360-0220	O-Ring, 0.070" x 0.551" x 0.691", EL and PR	1
27	9-5365	Filter Assy., EL (Includes Items 28 & 29)	1
27	35-4619	Filter Assy., 0.025, Regulator, PR (Includes Item 28)	1
28	360-0494	O-Ring, 0.070" x 0.426" x 0.566"	1
29	360-0497	O-Ring, 0.070" x 0.239" x 0.379", EL	1
30	35-5680	Plug Assy., 2-Way, PR	1
31	35-6363	Plug, Communication, PR	1
32	9-2623	Tube, 1/4" x 8", PR	2
33	363-3140	Regulator, Water Pressure, PR	1
34	363-1762	Valve, Shrader, 1/8" NPT, PR	1
35	*900-24	Adapter, Poly, PR	1
36	*900-40	Retainer, Tube, PR	3
N/I	363-3154	Nipple, Close, Brass, 1/8" NPT, PR	1
SERVICE ITEMS			
	360-0418	Petcock, 1/8", NPT	
	9-8581	Solenoid Assy. EL (Includes Items 1 & 2)	
	35-3099	Solenoid Assy., PR (Includes Items 1 & 2)	
	9-5359	Diaphragm Assy. (Includes Items 16-22)	
	89-6406	Cap Assy., 1", EL (Includes Items 4 and 6-10)	
	89-6407	Cap Assy., 1", PR (Includes Items 4 and 6-10)	
	89-6408	Cap Assy., 1", NO (Includes Items 4 and 7-10)	
* Order Through Finished Goods Distribution System-Minneapolis			

216 Series, 1.25 and 1.5 Inch (Sheet 1 of 2)



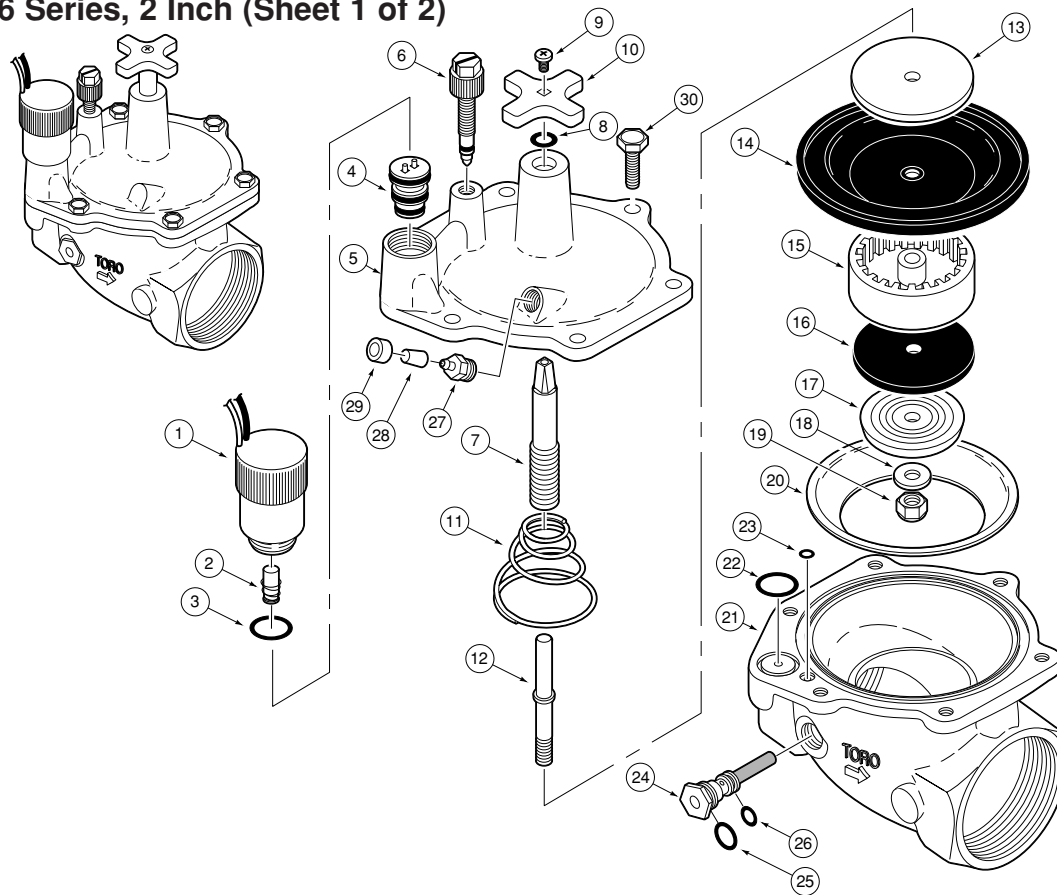
Item No.	Part No.	Description	Quantity Per Assy.
1	89-1673	Solenoid Assy.,	1
2	35-4717	Plunger Assy., with Spring, EL	1
2	35-4609	Plunger Assy., with Spring, PR	1
3	360-0220	O-Ring, 0.070" x 0.551" x 0.691", EL & PR	1
4	89-3407	Actuator Assy., EL (Includes O-Rings)	1
5	360-0498	Screw, Machine 8-32 x 1/4"	1
6	9-4527	Handle, Cross	1
7	360-0493	O-Ring, 0.070" x 0.364" x 0.504"	1
8	360-0499	Screw, Machine, 1/4-20 x 3/4"	5
9	89-5827	Cap, Valve, NO	1
9	89-5828	Cap, Valve, EL,	1
9	89-5829	Cap, Valve, PR,	1
10	102-0208	Bleed Screw Assy., EL and PR (Includes O-Ring)	1
11	*900-24	Adapter, Poly, NO	1
12	89-8157	Cap, Poly., NO	1
13	*900-40	Retainer, Tube, NO and PR	1
14	9-4424	Stem, Flow Control	1
15	102-0637	Spring, Diaphragm	1
16	9-5551	Shaft, Valve, 1.5"	1
17	9-5590	Plate, Support Diaphragm	1
18	9-4428	Diaphragm	1
19	35-2453	Spacer, Diaphragm	1
20	9-4420	Seat	1
21	9-4419	Retainer, Seat	1
22	360-0140	Washer, Flat, 1/4"	1
23	360-0594	Nut, Hex #10-24	1
24	35-2452	Support, Diaphragm	1
25	360-0530	O-Ring, 0.070" x 0.145" x 0.285"	1
26	360-0220	O-Ring, 0.070" x 0.551" x 0.691", EL & PR	1
27	89-1868	Body, Valve, 1-1/4", NO Hyd., NPT	1
27	89-1871	Body, Valve, 1-1/4", NO Hyd., BSP	1
27	89-1869	Body, Valve, 1-1/4", EL, NPT	1
27	89-1872	Body, Valve, 1-1/4", EL, BSP	1

216 Series, 1.25 and 1.5 Inch (Sheet 2 of 2)



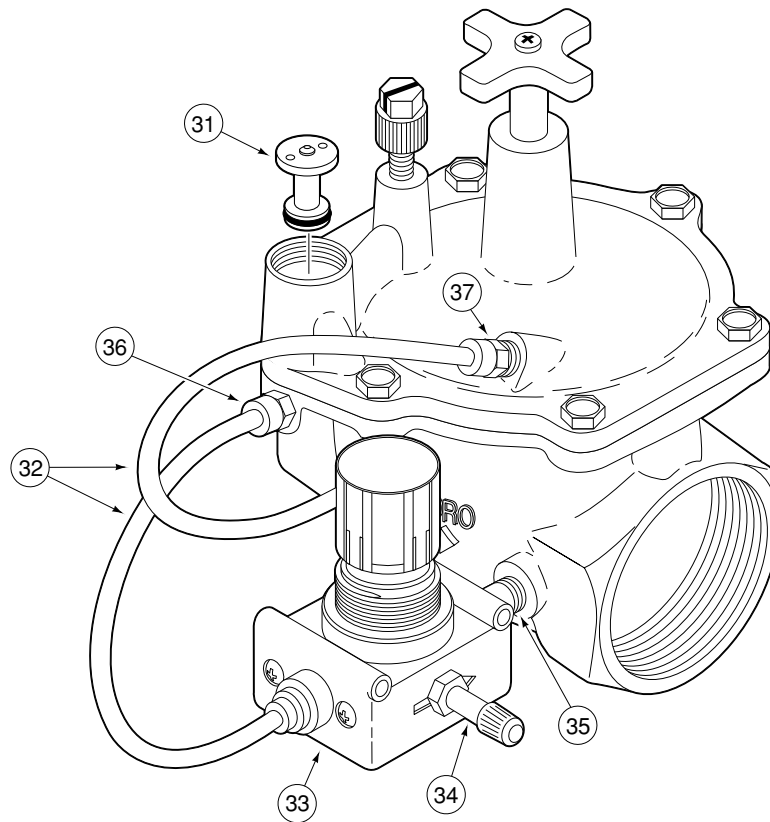
Item No.	Part No.	Description	Quantity Per Assy.
27	89-1870	Body, Valve, 1.25", PR, NPT	1
27	89-1873	Body, Valve, 1.25", PR, BSP	1
27	35-2731	Body, Valve, 1.5", NO, NPT	1
27	35-2733	Body, Valve, 1.5", NO, BSP	1
27	35-2730	Body, Valve, 1.5", EL, NPT	1
27	35-2732	Body, Valve, 1.5", EL, BSP	1
27	35-2840	Body, Valve, 1.5", PR, NPT	1
27	35-4839	Body, Valve, 1.5", PR, BSP	1
28	9-5365	Filter Assy., EL (Includes Items 29 & 30)	1
28	35-4619	Filter Assy., PR (Includes Item 29)	1
29	360-0497	O-Ring, 0.070" x 0.239" x 0.375", EL	1
30	360-0494	O-Ring, 0.070" x 0.426" x 0.566"	1
31	35-5680	Plug Assy., 2-Way, PR	1
32	9-2623	Tube, 1/4"x 8", PR	2
33	363-3140	Regulator Assy., Pressure, PR	1
34	363-1762	Valve Assy., Shrader, 1/8" NPT, PR	1
35	*900-24	Adapter, Poly, PR	1
36	*900-40	Retainer, Tube, PR	3
N/I	363-1760	Nipple, Close, Brass, 1/8" NPT, PR	1
SERVICE ITEMS			
	360-0418	Petcock, 1/8" NPT	
	35-3099	Solenoid Assy., 1.25", PR (Includes Items 1 & 2)	
	9-8581	Solenoid Assy., 1.25", EL (Includes Items 1 & 2)	
	9-5361	Diaphragm Assy. (Includes Items 16-23)	
	102-0637	Spring, Diaphragm, 1.5"	
	89-6381	Cap Assy., EL, Svc. (Includes Items 5-7 and 14)	
	89-6382	Cap Assy., PR, Svc. (Includes Items 5-7 and 14)	
	89-6383	Cap Assy., NO, Svc. (Includes Items 5-7 and 14)	
* Order Through Finished Goods Distribution System—Minneapolis			

216 Series, 2 Inch (Sheet 1 of 2)



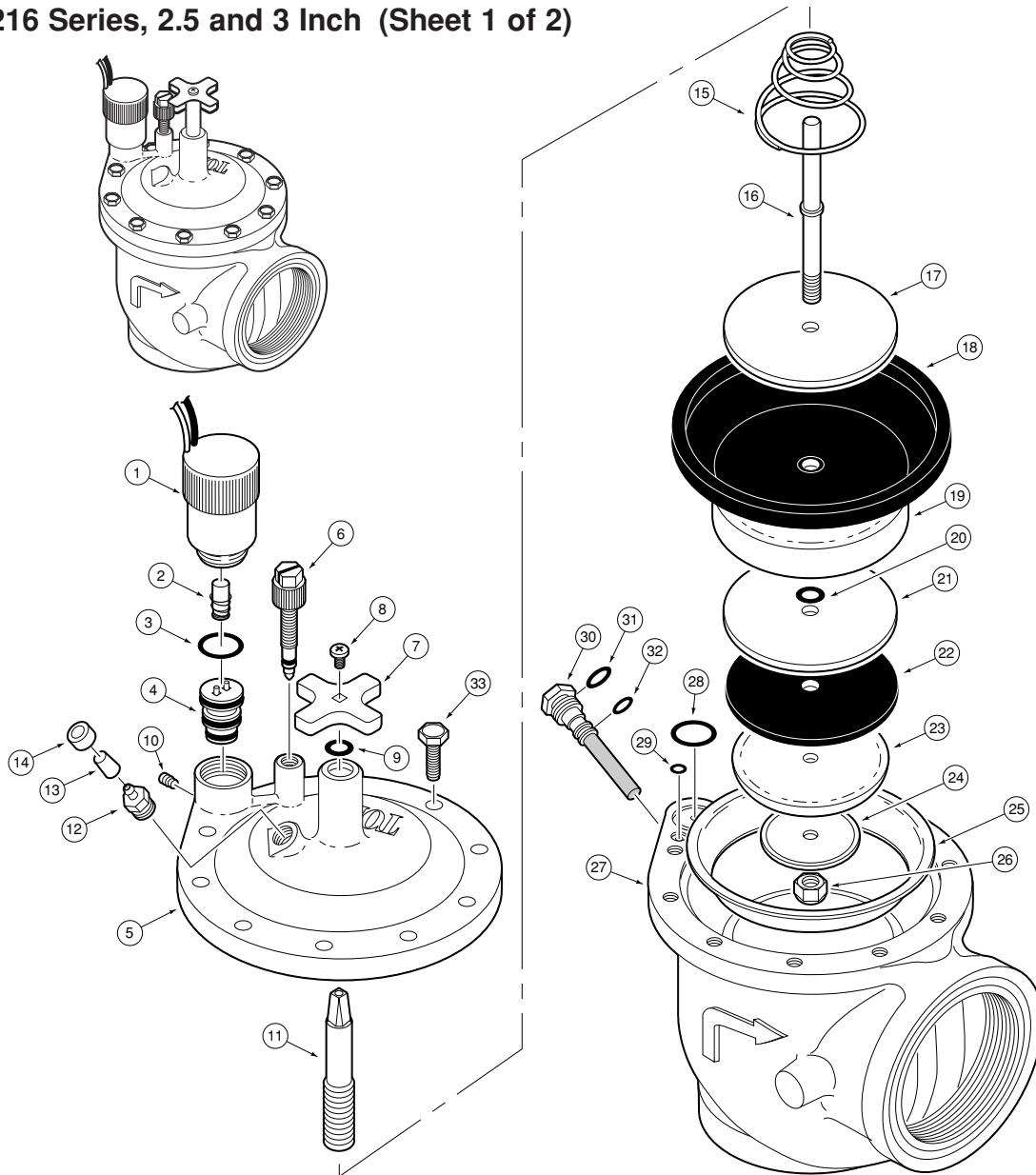
Item No.	Part No.	Description	Quantity Per Assy.
1	89-1673	Solenoid Assy., EL & PR	1
2	35-4717	Plunger Assy. w/Spring, EL	1
2	35-4609	Plunger Assy. w/Spring, PR	1
3	360-0220	O-Ring, 0.070" x 0.551" x 0.691", EL & PR	1
4	89-3407	Actuator Assy., EL (Includes O-Rings)	1
5	89-5832	Cap, Valve, EL (Post-10/93)	1
5	89-5831	Cap, Valve, NO Hyd.	1
5	89-5833	Cap, Valve, PR (Post-10/93)	1
6	102-0208	Bleed Screw Assy., EL & PR (Includes O-Ring)	1
7	9-4543	Shaft, Flow Control	1
8	360-0493	O-Ring, 0.070" x 0.364" x 0.504"	1
9	360-0498	Screw, Machine 8-32 x 1/4"	1
10	9-4527	Handle, Cross	1
11	89-1652	Spring, Diaphragm	1
12	9-7534	Shaft, Diaphragm	1
13	35-3139	Plate, Support Diaphragm, Upper	1
14	9-4542	Diaphragm, 2"	1
15	35-3141	Spacer, Diaphragm	1
16	35-3142	Seat	1
17	9-4536	Retainer, Seat	1
18	360-0140	Washer, Flat, 1/4"	1
19	360-0594	Nut, Hex 1/4-20	1
20	9-4541	Plate, Support, Diaphragm	1
21	35-3110	Body, Valve, EL, NPT	1
21	35-3111	Body, Valve, NO, NPT	1
21	35-4841	Body, Valve, EL, BSP	1
21	35-4843	Body, Valve, NO, BSP	1
21	35-3112	Body, Valve, PR, NPT	1
21	35-4844	Body, Valve, PR, BSP	1
22	360-0220	O-Ring, 0.070" x 0.551" x 0.691", EL & PR	1
23	360-0530	O-Ring, 0.070" x 0.145" x 0.285", EL & PR	1

216 Series, 2 Inch (Sheet 2 of 2)



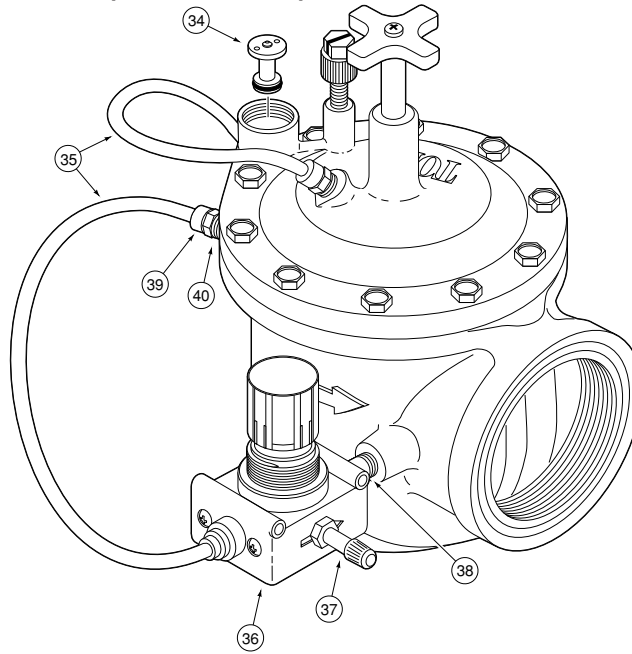
Item No.	Part No.	Description	Quantity Per Assy.
24	9-7681	Filter Assy., EL (Includes Items 25 & 26)	1
24	35-4619	Filter Assy., PR (Includes Item 25)	1
25	360-0494	O-Ring, 0.070" x 0.426" x 0.566", EL & PR	1
26	360-0497	O-Ring, 0.070" x 0.239" x 0.379", EL	1
27	*900-24	Adapter, Poly, NO & PR	1
28	89-8157	Cap, Poly 1/4", Hyd.	1
29	*900-40	Retainer, Tube	1
30	360-0499	Screw, Machine, 1/4-20 x 3/4"	6
31	35-5680	Plug Assy., 2-Way, PR	1
32	9-2623	Tube, 1/4" x 8", PR	2
33	363-3140	Regulator, Pressure, Brass Valve, PR	1
34	363-1762	Valve Assy., Shrader, 1/8" NPT, PR,	1
35	363-3154	Nipple, Close, Brass, 1/8" NPT, PR	1
36	*900-40	Retainer, Tube, PR	3
37	*900-24	Adapter, Poly, PR	2
		SERVICE ITEMS	
	360-0418	Petcock, 1/2" NPT	
	35-3099	Solenoid Assy., PR (Includes Items 1 & 2)	
	9-8581	Solenoid Assy. (Includes Items 1 & 2)	
	9-5363	Diaphragm Assy. (Includes Items 12-19)	
	35-4892	Regulator Assy., PR (Includes Items 33-35)	
	89-6384	Cap Assy., EL, Svc. (Includes Items 5-10)	
	89-6385	Cap Assy., PR, Svc. (Includes Items 5-10)	
	89-6386	Cap Assy., NO, Svc. (Includes Items 5 and 7-10)	
		* Order Through Finished Goods Distribution System—Minneapolis	

216 Series, 2.5 and 3 Inch (Sheet 1 of 2)



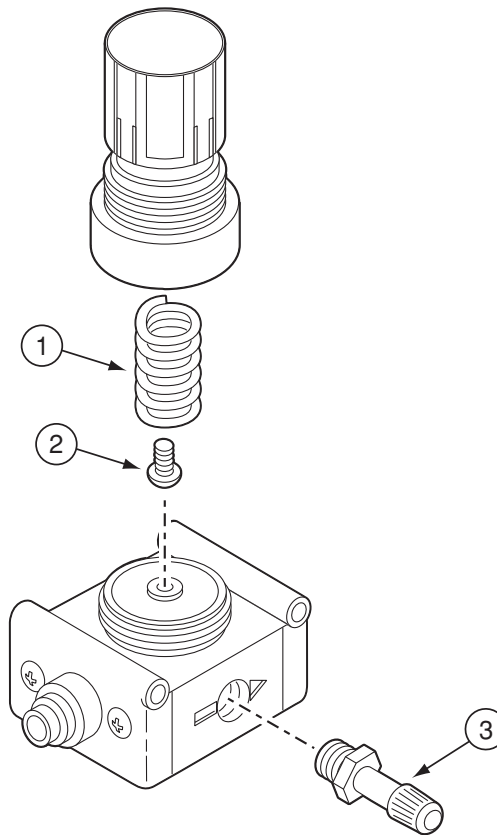
Item No.	Part No.	Description	Quantity Per Assy.
1	89-1673	Solenoid Assy. EL& PR	1
2	35-4717	Plunger Assy. w/Spring, EL	1
2	35-4609	Plunger Assy. w/Spring, PR	1
3	360-0220	O-Ring, 0.070" x 0.551" x 0.691", EL & PR	1
4	89-3407	Actuator Assy., EL (Includes O-Rings)	1
5	89-5835	Cap, Valve, NO, Shallow Diaphragm Groove (Post-10/93)	1
5	89-5836	Cap, Valve, EL, Shallow Diaphragm Groove (Post-10/93)	1
5	89-5837	Cap, Valve, PR, Shallow Diaphragm Groove, (Post-10/93)	1
6	102-0208	Bleed Screw Assy., EL & PR (Includes O-Ring)	1
7	9-4527	Handle, Cross	1
8	360-0498	Screw, Machine 8-32 x 1/4"	1
9	360-0493	O-Ring, 0.070" x 0.364" x 0.504"	1
10	360-0223	Screw, Set, Half-dog Point, 6-32 x 1/4", EL and PR	1
11	9-4543	Shaft, Flow Control	1
12	*900-24	Adapter, Poly, NO and PR	1
13	89-8157	Cap, Poly 1/4", NO	1
14	*900-40	Retainer, Tube, NO	1
15	89-1744	Spring, Diaphragm	1
16	9-7534	Shaft, Diaphragm	1

216 Series, 2.5 and 3 Inch (Sheet 2 of 2)



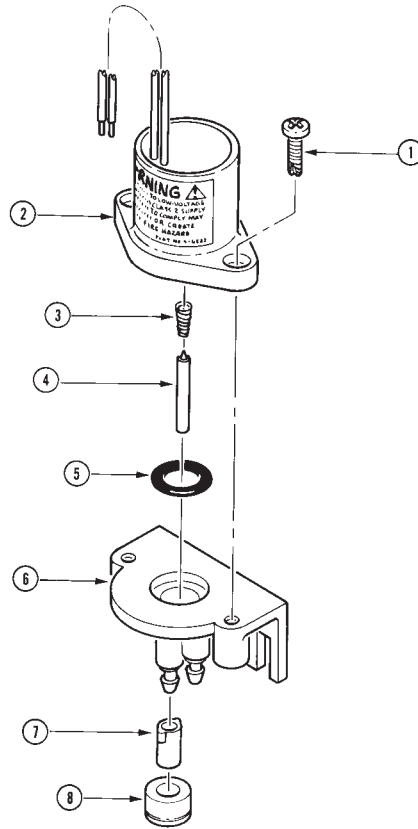
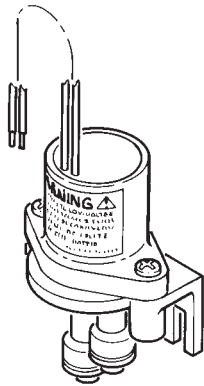
Item No.	Part No.	Description	Quantity Per Assy.
17	9-7412	Plate, Support Diaphragm, Upper	1
18	89-7866	Diaphragm, Shallow Groove (Post-10/93)	1
18	89-9433	Diaphragm, (Includes Item 25)	1
19	35-1403	Spacer, Diaphragm	1
20	360-0497	O-Ring, 0.070" x 0.239" x 0.379"	1
21	35-1401	Support, Seat	1
22	35-1402	Seat	1
23	35-1410	Retainer, Seat	1
24	9-4415	Washer Retainer	1
25	89-8126	Support, Diaphragm	1
26	360-0594	Nut, Hex 1/4-20 x 3/4"	1
27	89-6389	Body, Valve, 2.5", NO, Shallow Diaphragm Groove (Post-10/93)	1
27	89-6390	Body, Valve, 3", NO, Shallow Diaphragm Groove (Post-10/93)	1
27	89-6391	Body, Valve, 2.5", EL, Shallow Diaphragm Groove (Post-10/93)	1
27	89-6392	Body, Valve, 3", EL, Shallow Diaphragm Groove (Post-10/93)	1)
27	89-6388	Body, Valve, 2.5", PR, Shallow Diaphragm Groove (Post-10/93)	1
27	89-6387	Body, Valve, 3", PR, Shallow Diaphragm Groove (Post-10/93)	1
28	360-0220	O-Ring, .070" x 0.551" x 0.691", EL & PR	1
29	360-0530	O-Ring, .070" x 0.145" x 0.285", EL & PR	1
30	9-7681	Filter Assy., EL (Includes Items 31 & 32)	1
30	35-4931	Filter Assy., PR (Includes Items 31)	1
31	360-0494	O-Ring, 0.070" x 0.426" x 0.566", EL & PR	1
32	360-0497	O-Ring, 0.070" x 0.239" x 0.379", EL	1
N/I	9-8011	Tube, Discharge, EL	1
33	360-0499	Screw, Machine, 1/4-20 x 3/4"	10
34	35-5680	Plug Assy., 2-Way, PR	1
36	363-3140	Regulator Assy., Pressure, PR	1
37	363-1762	Valve Assy., Shrader, 1/8" NPT, PR	1
38	363-3154	Nipple, Brass Close, 1/8" NPT, PR	1
35	9-2623	Tube, 1/4" x 8", PR	2
39	*900-40	Retainer, Tube, PR	3
40	3-3362	Adapter, Poly 1/8" x 1/4", NO	1
		SERVICE ITEMS	
	360-0418	Petcock, 1/8" NPT	
	35-3099	Solenoid Assy., PR (Includes Items 1 & 2)	
	9-8581	Solenoid Assy., EL (Includes Items 1 & 2)	
	35-4892	Regulator Assy., Valve, PR (Includes Items 36-38)	
	89-6418	Cap Assy., EL, Shallow Diaphragm Groove (Post-10/93) (Includes Items 5-11)	
	89-6417	Cap Assy., NO, Shallow Diaphragm Groove (Post-10/93) (Includes Items 5 and 7-11)	
	89-6419	Cap Assy., PR, Shallow Diaphragm Groove (Post-10/93) (Includes Items 5-11)	
	89-4825	Diaphragm w/Retrofit Seal, Deep Groove (Pre-10/93)	
	89-6420	Diaphragm Assy. w/Retrofit Seal, Deep Groove (Pre-10/93) (Includes Items 16-26)	
	89-6421	Diaphragm Assy., Shallow Groove (Post-10/93) (Includes Items 16-26)	
		* Order Through Finished Goods Distribution System-Minneapolis	

Pressure Regulator



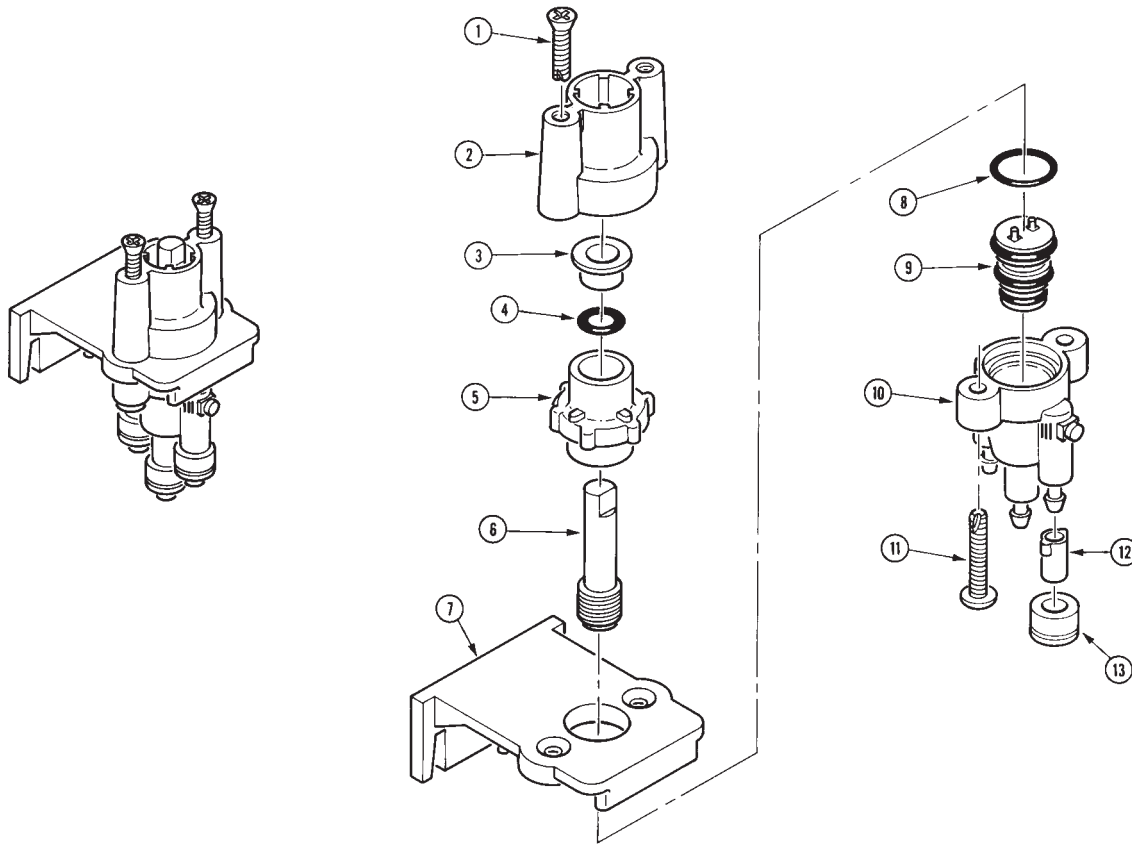
Item No.	Part No.	Description	Quantity Per Assy.
1	363-3498	Spring	1
2	363-3499	Screw	1
3	363-1762	Valve, Shrader, 1/8" NPT	1

2-Way Pilot Valve



Item No.	Part No.	Description	Quantity Per Assy.
1	360-0715	Screw, Tap, #10	2
2	89-0878	Solenoid Assy. (Includes Items 2–4)	1
3	9-6148	Spring, Plunger, Solenoid	1
4	9-6527	Plunger Assy.	1
5	2-9652	O-Ring, 7/16" x 5/8"	1
6	9-8280	Body Assy., Valve	1
7	89-8157	Cap, Poly	2
8	*900-40	Retainer, Tube	2
* Order Through Finished Goods Distribution System—Minneapolis			

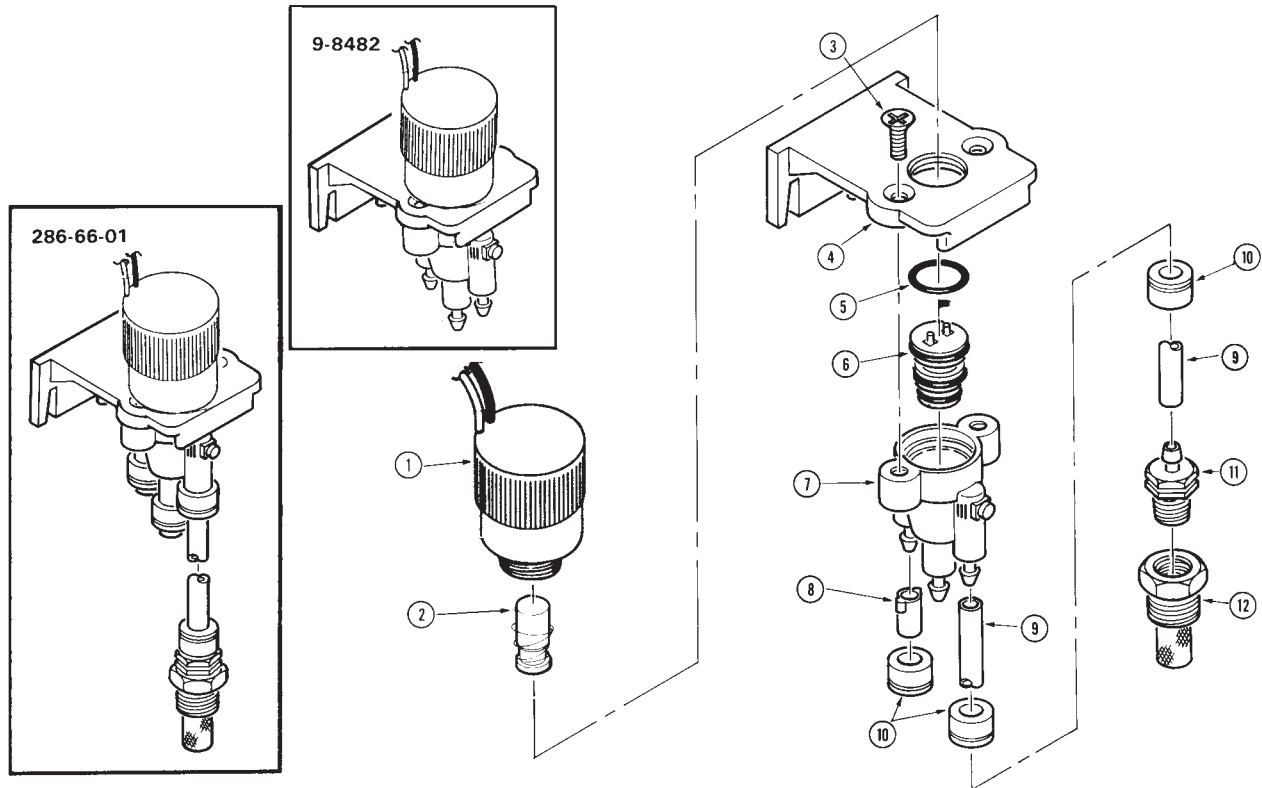
Manual Actuator



Item No.	Part No.	Description	Quantity Per Assy.
1	360-0561	Screw, Tap, #8	2
2	9-7803	Adapter (Includes Item 3)	1
3	9-7800	Retainer, O-Ring	1
4	2-9652	O-Ring, 7/16" x 5/8"	1
5	9-7799	Cap	1
6	9-7798	Stem, Control	1
7	9-8055	Bracket, Mounting	1
8	360-0220	O-Ring, 0.070" x 0.551" x 0.691"	1
9	89-3407	Actuator Assy.	1
10	35-0992	Body Assy., Pilot Valve	1
11	363-1244	Screw, Tap, #8	2
12	89-8157	Cap, Poly	3
13	*900-40	Retainer, Tube	3

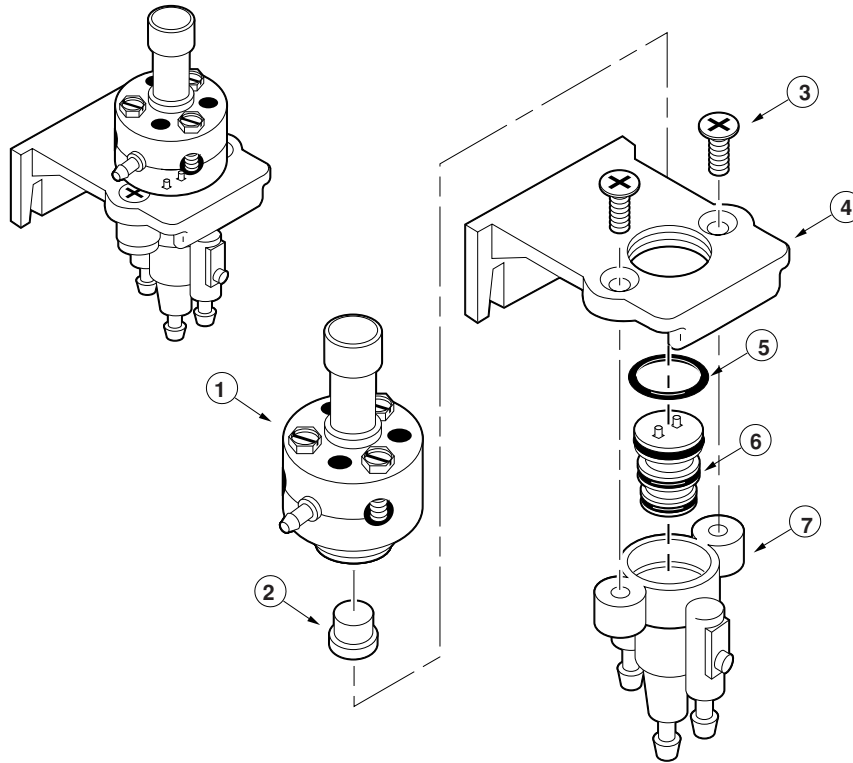
* Order Through Finished Goods Distribution System—Minneapolis

3-Way Actuator



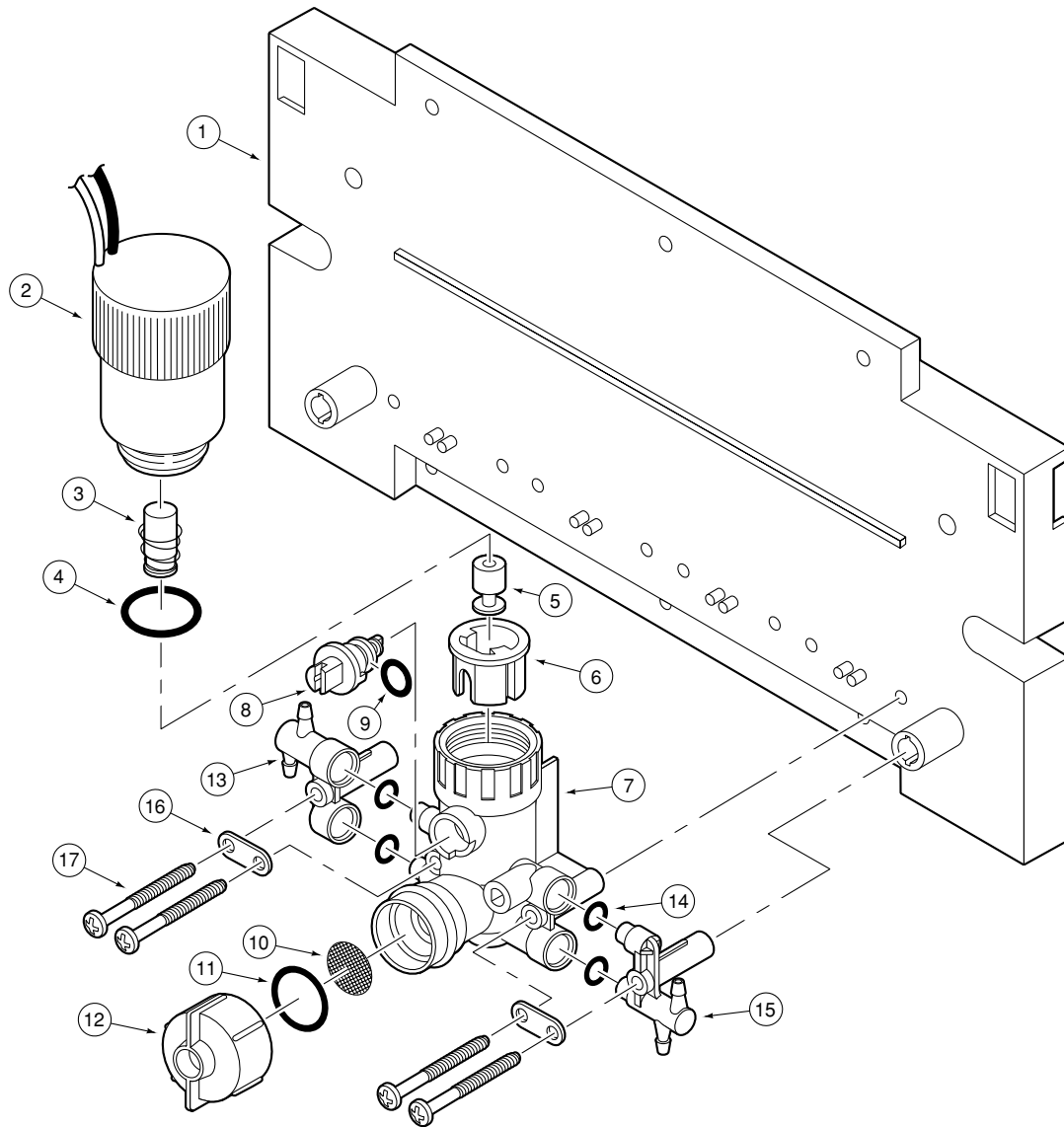
Item No.	Part No.	Description	Quantity Per Assy.
1	89-1673	Solenoid Assy.	1
2	35-4717	Plunger Assy.	1
3	363-1030	Screw, Machine, 10-24 x 1/2"	2
4	9-8055	Bracket, Mounting	1
5	360-0220	O-Ring, 0.070" x 0.551" x 0.691"	1
6	89-3407	Actuator Assy.	1
7	35-0992	Body Assy., Pilot Valve (Used with 286-66-01)	1
7	35-7153	Body Assy., Pilot Valve (Used with 9-8482)	1
8	89-8157	Cap, Poly (Used with 286-66-01)	1
9	9-1482	Tube, 1/4" x 36" (Used with 286-66-01)	1
10	*900-40	Retainer, Tube (Used with 286-66-01)	3
11	89-8157	Adapter, Poly (Used with 286-66-01)	1
12	995-14	Fitting, Screen, Supply (Used with 286-66-01)	1
		SERVICE ITEMS	
	35-4603	Kit, Service Assy. (Includes Items 3–7) (Used with 286-66-01)	
	35-4602	Kit, Service Assy. (Includes Items 3–7) (Used with 9-8482)	
		* Order Through Finished Goods Distribution System—Minneapolis	

3-Way Actuator, Normally Closed



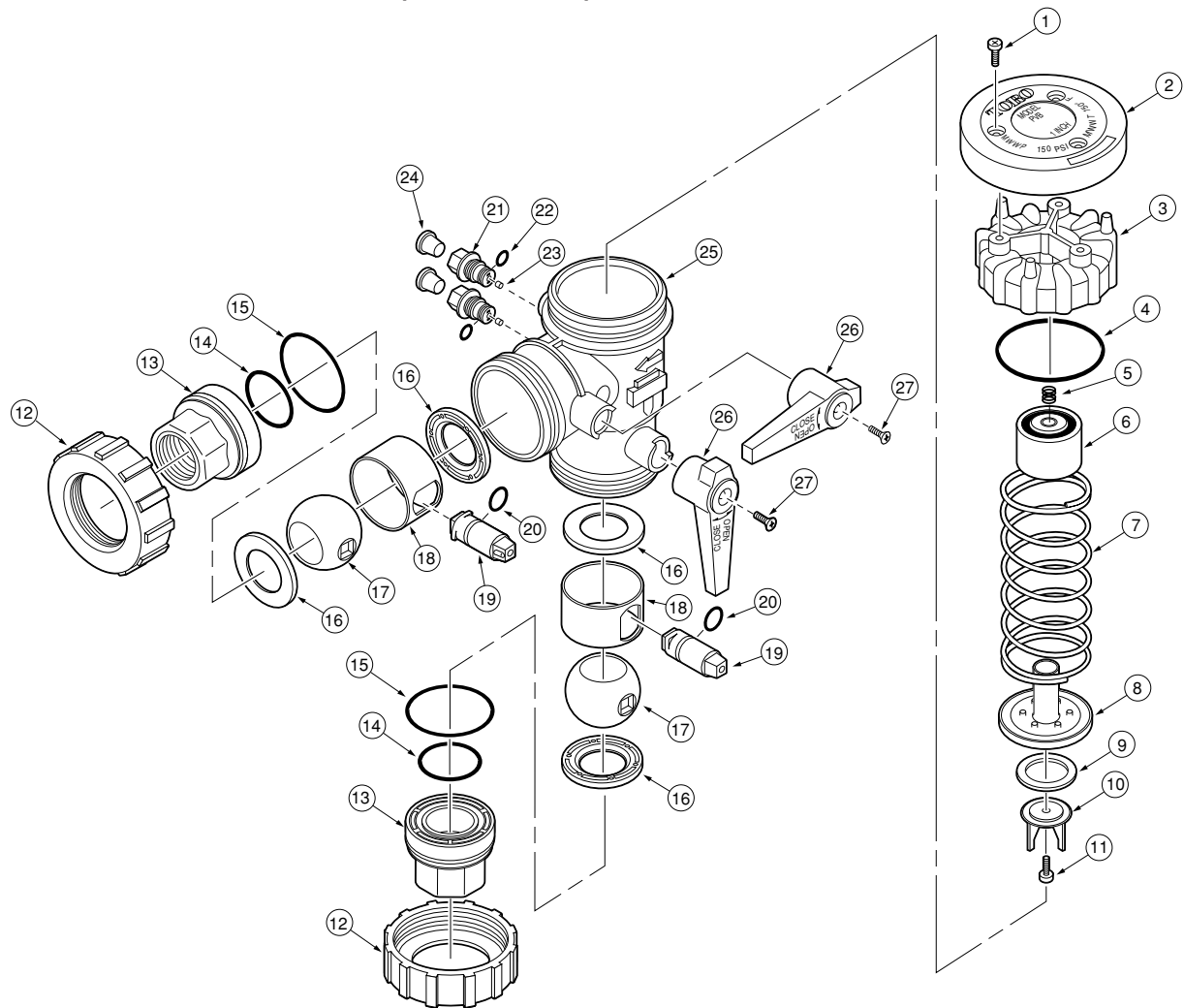
Item No.	Part No.	Description	Quantity Per Assy.
1	89-6005	Adapter, Pilot Valve, NC	1
2	89-7869	Shuttle	1
3	363-1030	Screw, Machine, 10-24 x 1/2"	2
4	9-8055	Bracket, Mounting	1
5	360-0220	O-Ring, 0.070" x 0.551" x 0.691"	1
6	89-3407	Actuator Assembly (Includes O-Rings)	1
7	35-7153	Body Assy., Pilot Valve	1
		SERVICE ITEMS	
	35-4603	Kit, Service Assy. (Includes Items 3–8)	

Electric-Hydraulic Converter Module Assembly



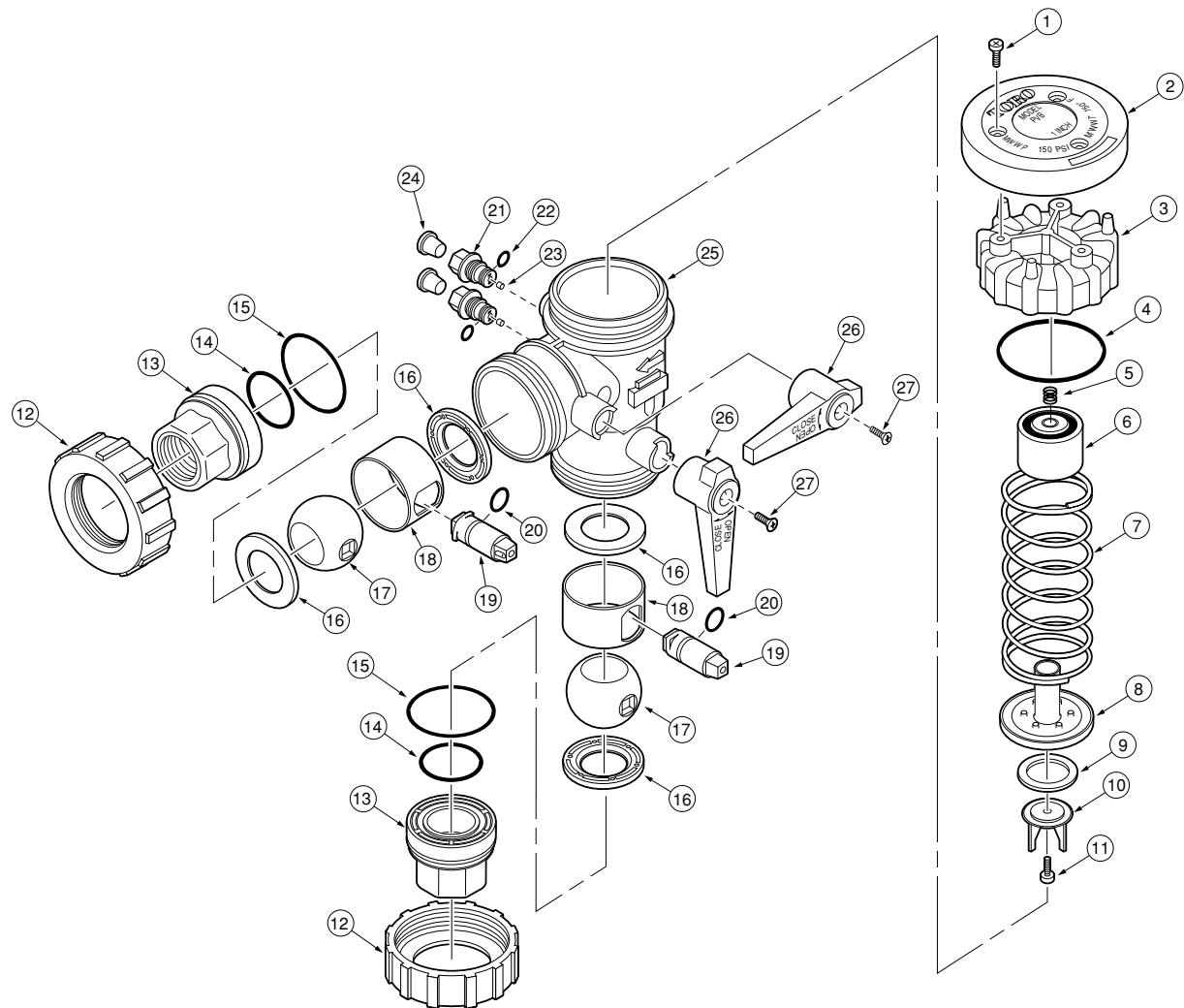
Item No.	Part No.	Description	Quantity Per Assy.
1	89-1662	Baseplate	1
2	89-5985	Solenoid Assy.	4
3	35-4717	Plunger Assy.	4
4	360-0220	O-Ring	4
5	91-1497	Plunger, Shuttle	4
6	89-1627	Sleeve	4
7	89-8203	Body Assy., NO with Blue Pins on Actuator	4
7	89-8204	Body Assy., NC with Green Pins on Actuator	4
8	89-8131	Stem, Manual, NO (Blue)	4
8	89-8130	Stem, Manual, NC (Green)	4
9	360-0497	O-Ring	4
10	89-0371	Screen, Filter	4
11	360-0402	O-Ring	4
12	89-1635	Cap, Filter	4
12	89-8205	Cap Assy., Blind	4
13	89-1665	Tee, Female	1
14	2-9654	O-Ring	10
15	89-1666	Tee, Male	1
16	89-1675	Strap, Tie	2
17	363-3158	Screw, #6 x 1.25"	7

Pressure Vacuum Breaker (Sheet 1 of 2)



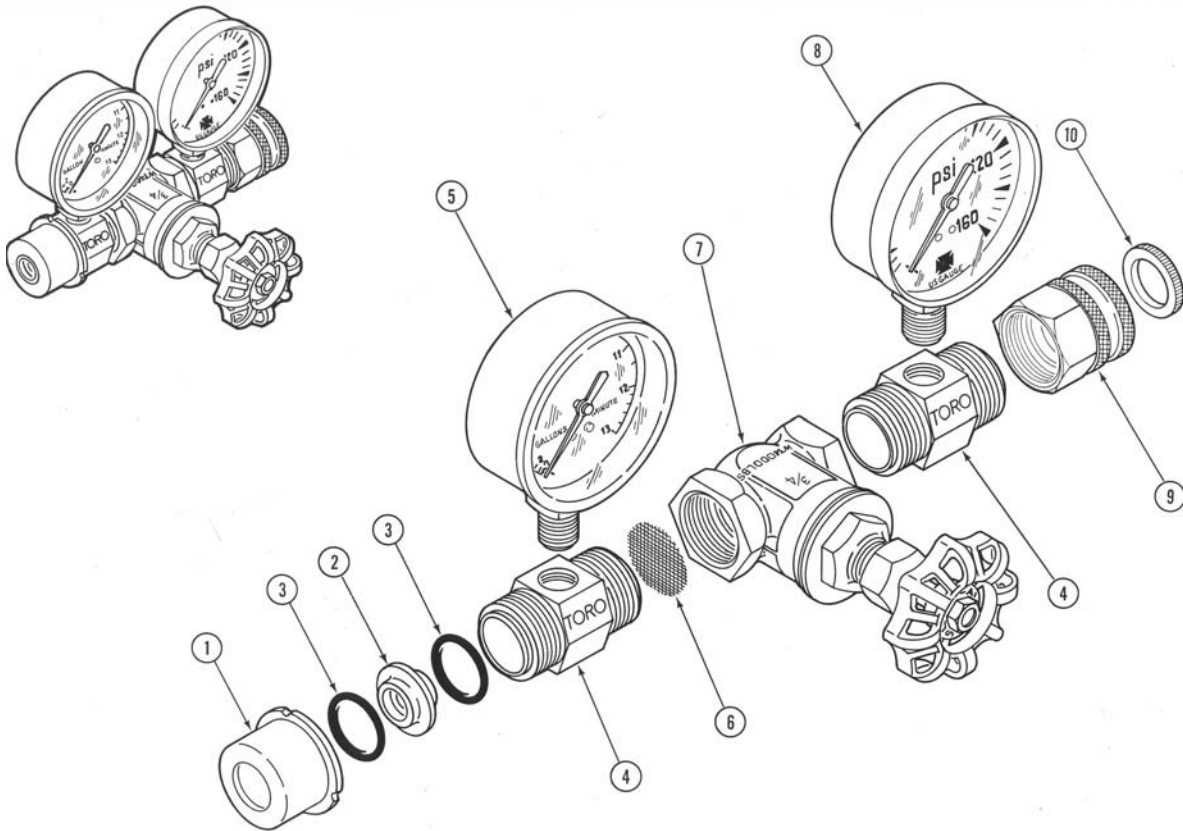
Item No.	Part No.	Description	Quantity Per Assy.
1	360-0715	Screw, Tap, #10, PHFH, SST	3
2	89-5809	Cover, 3/4"	1
2	89-5808	Cover, 1"	1
3	89-6019	Cap	1
4	400-0261	O-Ring	1
5	80-0528	Spring, Float Release	1
6	-----	Core, Float	1
7	80-0527	Spring	1
8	-----	Valve, Check (See Service Item 80-0553, p. 125)	1
9	-----	Disc (See Service Item 80-0553, p. 125)	1
10	-----	Guide (See Service Item 80-0553, p. 125)	1
11	363-1444	Screw, Tap, #6, PHPH, SST	1
12	89-5810	Nut, Union	2
13	89-6012	Union Adapter Assy., 3/4" S x S (Includes Item 14)	1
13	89-6013	Union Adapter Assy., 3/4" NPT (Includes Item 14)	1
13	89-6014	Union Adapter Assy., 1" S x S (Includes Item 14)	1
13	89-6015	Union Adapter Assy., 1" NPT (Includes Item 14)	1
13	89-6016	Union Adapter Assy., 1" BSP (Includes Item 14)	1
14	360-0155	O-Ring	2
15	363-1418	O-Ring	2
16	80-0211	Seal	4
17	89-5812	Ball	2
18	80-0209	Ring, Valve	2
19	80-0552	Stem	2

Pressure Vacuum Breaker (Sheet 2 of 2)



Item No.	Part No.	Description	Quantity Per Assy.
20	360-0402	O-Ring	2
21	89-4727	Test Cock	2
22	360-0107	O-Ring	2
23	89-4728	Seal, Test Cock	2
24	363-1415	Plug, 1/8" NPT	2
25	89-5879	Body, PVB	1
26	80-0125	Handle	2
27	363-1030	Screw	2
		SERVICE ITEMS	
	80-0553	Check Valve Assy. (Includes Items 8–11)	
	89-5878	Assy., Test Cock (Includes Items 21–24)	
	89-5879	Assy., Body (Includes Items 16–25)	
	89-5880	Kit, Union Adapter, 3/4" S x S (Includes Items 12–15)	
	89-5881	Kit, Union Adapter, 3/4" NPT (Includes Items 12–15)	
	89-5882	Kit, Union Adapter, 1" S x S (Includes Items 12–15)	
	89-5883	Kit, Union Adapter, 1" NPT (Includes Items 12–15)	
	89-5884	Kit, Union Adapter, 1" BSP (Includes Items 12–15)	
	89-6006	Kit, Float Assy. (Includes Items 3–6)	

Flow Gauge, Model 995-01



Item No.	Part No.	Description	Quantity Per Assy.
1	9-4576	Threaded Insert – 3/4"	1
2	5-311	Orifice Plate	1
3	360-0596	O-Ring	2
4	9-6023	Nipple	2
5	5-309	Flow Gauge	1
6	5-307	Filter Screen	1
7	5-301	Gate Valve – 3/4"	1
8	5-308	Pressure Gauge	1
9	5-303	Hose to Pipe Fitting	1
10	5-401	Hose Washer – 3/4"	1