



720 Conversion Assembly Installation Instructions



WARNING

PRIOR TO SERVICING SPRINKLER, SHUT OFF WATER SUPPLY AND DISABLE IRRIGATION SYSTEM CONTROLLER. FAILURE TO COMPLY MAY RESULT IN SERIOUS INJURY IF SPRINKLER IS PRESSURIZED OR BECOMES OPERATIONAL WHILE REMOVING OR INSTALLING SPRINKLER COMPONENTS.

DURING OPERATION, NEVER STAND OR LEAN DIRECTLY OVER SPRINKLER OR COME IN CONTACT WITH SPRAY. FAILURE TO COMPLY MAY RESULT IN SERIOUS INJURY.

Installation Procedure

1. Remove the old sprinkler assembly from the sprinkler body. If converting an electric valve-in-head sprinkler, remove the valve assembly as well.
2. Thoroughly clean the inside walls of the sprinkler body to ensure proper sealing of the conversion assembly.
3. For electric valve-in-head body conversions, replace the piston assembly with the provided piston replacement assembly (distinguished by its red-colored retainer). See **Figure 1**.
4. Install the conversion assembly into the sprinkler body. For part circle conversion assemblies, align the left watering border indicator to the desired position for effective watering. See **Figure 2**.
5. Install the snap ring into the body groove to retain the conversion assembly.



CAUTION: Make sure the snap ring is completely seated in the body groove to prevent separation of conversion assembly from body when pressurized.

6. Place the cap assembly onto the conversion assembly by aligning the notch on the cap with the rib on the conversion assembly body. See **Figure 3**.
7. Secure the cap with the four retaining screws provided.
8. Adjust the arc of the part circle conversion assembly as needed. See "720 Series Adjustment Instruction", form number 373-0028, for details.

NOTE: The part circle conversion assembly is factory set to 180° arc.

Figure 1

(Valve Assembly-Electric Models)

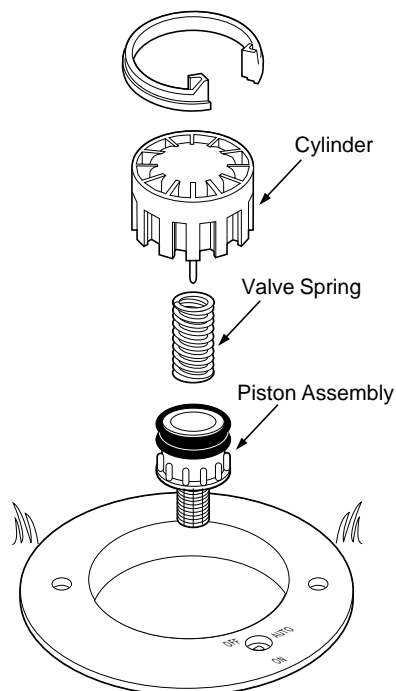


Figure 2

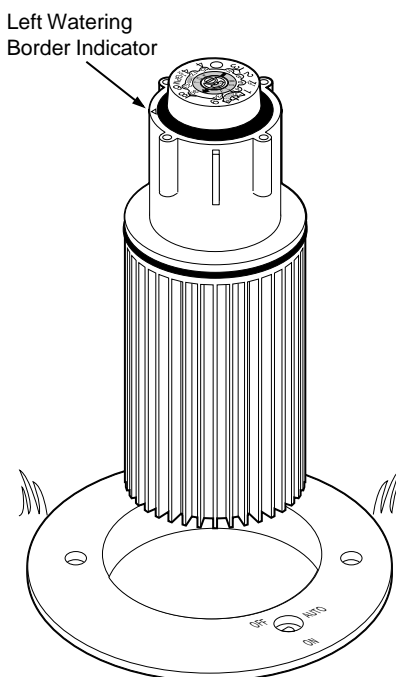
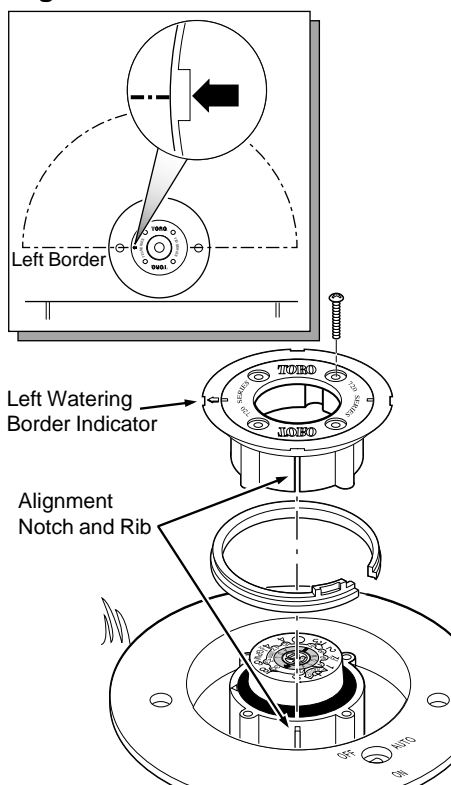
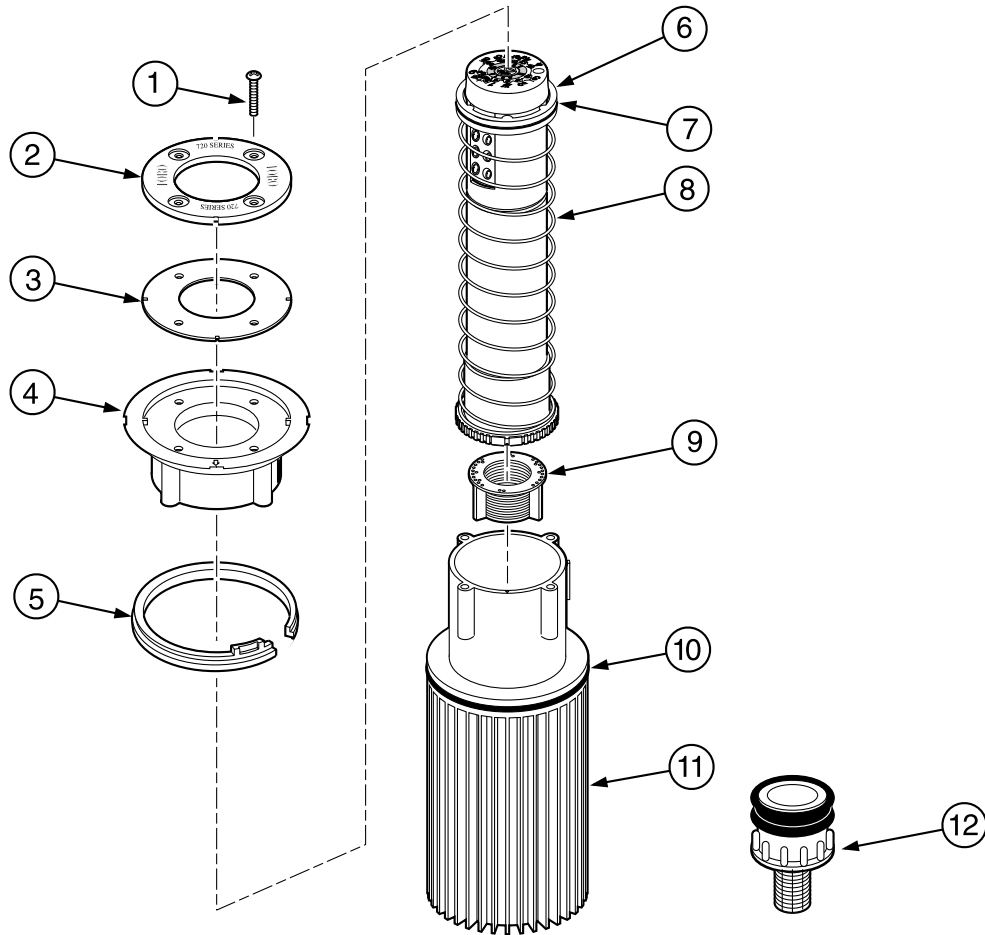


Figure 3



720 Conversion Assembly



Item No.	Part No.	Nomenclature	Quantity Per Assy.
1	363-3864	Screw, 8-32 x 1"	4
2	102-0257	Retainer, Debris Seal	1
2	102-0258	Retainer, Debris Seal, Effluent	1
3	102-0256	Seal, Debris	1
4	89-9446	Support, Riser, Ribbed Body	1
4	89-9698	Support, Riser, Non-Ribbed Body	1
5	89-1385	Snap Ring	1
6	102-0255	Seal, Riser (Does Not Include Item 7)	1
7	363-3991	O-Ring	1
8	89-9725	Riser Assembly (Adjustable Part Circle, Includes Items 4–6)	1
8	89-9726	Riser Assembly (Full Circle, Includes Items 4–6)	1
9	89-5847	Screen	1
10	3-2508	O-Ring	1
11	89-9443	Sleeve, Riser	1
12	102-0081	Piston Assembly (Electric Models)	1
		Accessories	
	102-1303	Key, Adjustment	